

# Proposal for the Continued Provision of Police Services in the Town of Ossining



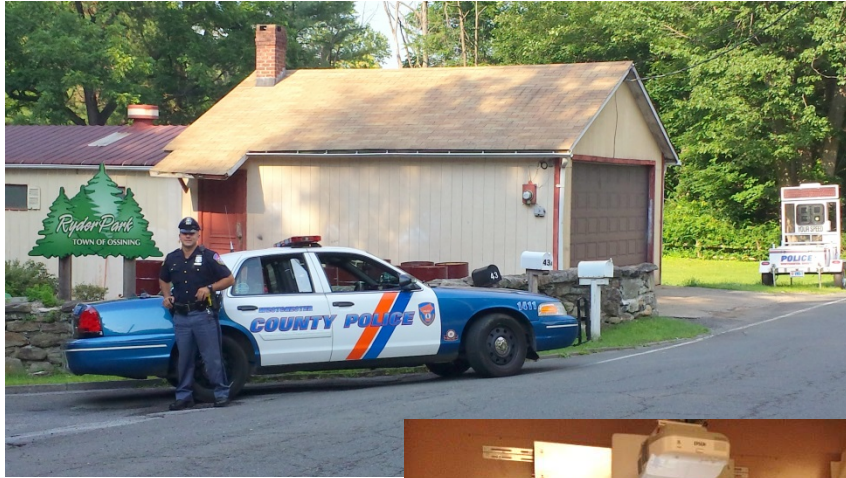
2015 - 2018



Westchester  
gov.com

Robert P. Astorino, Westchester County Executive

# Your Local Police Department

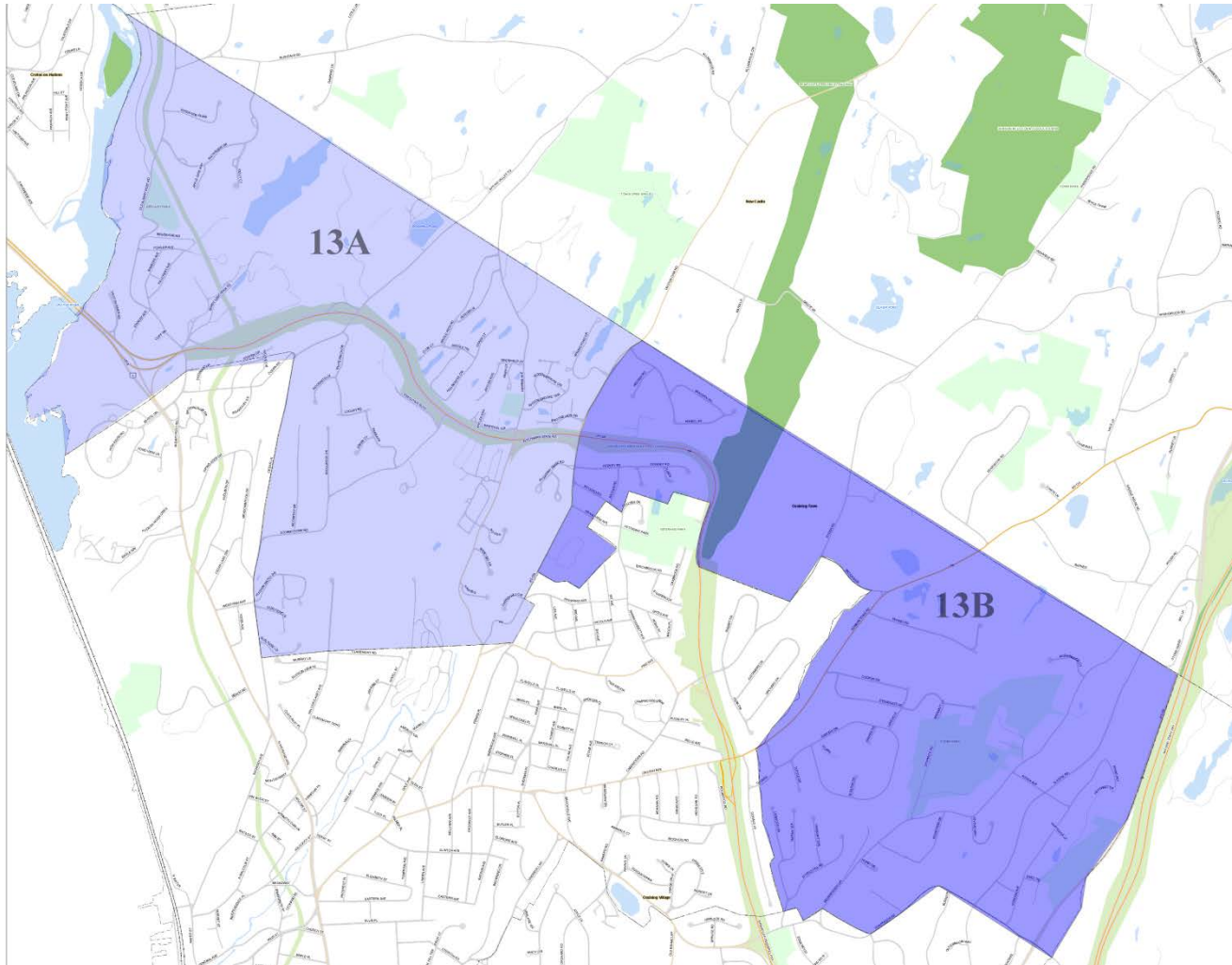


- ▶ County Police serving Town for 3 ½ years
- ▶ Patrol Services – P.O.s dedicated to Town
  - Core group of 10 P.O.s regularly assigned
  - Relief from pool of approx. 25 with specific knowledge/experience with Town
- ▶ Investigative Services
  - 1 Det. for Town cases



# Your Local Police Department

- ▶ Patrol Plan - 2 days, 2 eves, 1 midnights



# Your Local Police Department



- ▶ Ongoing community service programs
  - Your Cop
  - Dark House Monitoring
  - HOA Liaison
  - False Alarm Monitoring
  - Community education and outreach
- ▶ Responsive to Town Government and community



# Your Local Police Department

## ► Public/Police Interface

- 911 for emergencies
- non-emerg. tel no.
- meet Police Officers, Detectives and supervisors at home/business or County Police HQ, if desired
- Town elected officials
- County Police liaison
- County Police admin.



# Communications

- ▶ Communications – call taking and dispatching
  - staffed with multiple communications operators 24/7
  - supervised by Sergeant or Lieutenant desk officer 24/7
  - ANI/ALI equipped
  - AVL equipped



# Supervision

- ▶ **Sergeant (first-line supervision)**
  - supervise Town and other area patrols 24/7 **in the field**
  - back-up / supplemental first-line supervision available
- ▶ **Lieutenant (second-line supervision)**
  - on duty 24/7 for routine supervision and to respond to a scene as needed
- ▶ **Command-level Supervision**
  - Captain and higher on-duty or on call 24/7





# Department of Public Safety

- ▶ **County Police**
  - 270 sworn members and 70 civilian members providing:
    - Uniformed Patrol Services
    - Investigative Services
    - Special Operations Services
    - Administrative & Support Services



Westchester  
gov.com



# Department of Public Safety



- ▶ Accredited Agency since 1994
  - acknowledges the implementation of policies that are conceptually sound and operationally effective
- ▶ History of Contracted Police Services
  - Town of Ossining
  - Town of Cortlandt
  - School Resource Officers
  - State Parkways
  - Dept. of Social Services



# Department of Public Safety

## ► Dedicated services integrated with full resources of DPS (for example):

- Accident Investigation
- Aviation
- Hazardous Devices
- Communications
- Crime Analysis
- Canine Teams
- Crime Prevention and Physical Security
- Environmental Crimes
- Forensic Investigations
- Intel, Security and Counterterrorism
- Internal Affairs (SIU)
- Hostage Negotiation
- Police Academy
- Special Victims
- Special Response Team





# Department of Public Safety

- ▶ **Specialized services close to community**
  - **Special Response Team and K9 personnel (patrol, tracking, narcotics and explosive detection) assigned throughout patrol services**
  - **Emergency Services Unit on duty 24/7 centrally located in County**

# Contracted Policing Model

- Town chooses the level of police services it wants and for which it is willing to pay
- County obligated under contract to maintain such level of services
- Town maintains control because County is contractually accountable to Town





# Estimated Cost Detail



## Days

**2 Police Officers  
per shift**



## Evenings

**2 Police Officers  
per shift**



## Midnights

**1 Police Officer  
per shift**

**Total  
Required:  
10 P.O.**

# Estimated Cost Detail



Detective

1

**One Detective assigned to  
Town investigations**





# Estimated Cost Detail

				2015		2016		2017		2018
<b>Expenses for 10 Police Officers:</b>				10						
<b>1010 Salaries (Top PO Salary Including Lgty)</b>					\$1,077,720		\$1,110,051		\$1,143,353	\$1,177,654
<b>1400 Overtime</b>					195,799		201,673		207,723	213,955
<b>1490 Holiday Pay</b>					48,109		49,552		51,039	52,570
<b>1540 Shift</b>					29,018		30,113		31,208	32,303
<b>Total Salary Expenses Before Fringes</b>					<b>\$1,350,645</b>		<b>\$1,391,389</b>		<b>\$1,433,323</b>	<b>\$1,476,481</b>
<b>1650 Retirement System</b>					327,532		340,195		338,981	334,423
<b>1651 FICA/Medicare @ 7% (Adj for Max)</b>					94,545		97,397		100,333	103,354
<b>1680 Medical Insurance (Includes Dental)</b>					333,412		353,417		374,622	397,100
<b>1715 Employee Benefit Fund</b>					22,500		23,500		24,500	25,500
<b>MTA Payroll Tax</b>					4,592		4,731		4,873	5,020
<b>Total Salary Expenses Including Fringes</b>					<b>\$2,133,227</b>		<b>\$2,210,629</b>		<b>\$2,276,631</b>	<b>\$2,341,877</b>
<b>3240 Uniform Allowance</b>					14,750		15,750		16,750	17,750
<b>Total</b>					<b>\$2,147,977</b>		<b>\$2,226,379</b>		<b>\$2,293,381</b>	<b>\$2,359,627</b>



# Estimated Cost Detail

				2015	2016	2017	2018
<b>Expenses for 1 Detective:</b>			1				
<b>1010 Salaries (Incl. Lgty)</b>				\$116,595	\$120,093	\$123,696	\$127,407
<b>1400 Overtime</b>				16,997	\$17,507	\$18,032	\$18,573
<b>1490 Holiday Pay</b>				4,931	\$5,079	\$5,231	\$5,388
<b>1540 Shift</b>				0	0	0	0
<b>Total Salary Expenses Before Fringes</b>				<b>\$138,523</b>	<b>\$142,679</b>	<b>\$146,959</b>	<b>\$151,368</b>
<b>1650 Retirement System</b>				33,592	34,885	34,756	34,285
<b>1651 FICA/Medicare @ 7% (Adj for Max)</b>				9,697	9,988	10,287	10,596
<b>1680 Medical Insurance (Includes Dental)</b>				33,341	35,342	37,462	39,710
<b>1715 Employee Benefit Fund</b>				2,250	2,350	2,450	2,550
<b>MTA Payroll Tax</b>				471	485	500	515
<b>Total Salary Expenses Including Fringes</b>				<b>\$217,874</b>	<b>\$225,728</b>	<b>\$232,414</b>	<b>\$239,023</b>
<b>3240 Uniform Allowance</b>				1,475	1,575	1,675	1,775
<b>Total</b>				<b>\$219,349</b>	<b>\$227,303</b>	<b>\$234,089</b>	<b>\$240,798</b>
<b>Total Personnel Expense &amp; Uniform Allowance</b>				<b>\$2,367,325</b>	<b>\$2,453,682</b>	<b>\$2,527,470</b>	<b>\$2,600,425</b>



# Estimated Cost Detail

					2015		2016		2017		2018
<b>Non-Personnel Costs</b>											
<b>3010 Gasoline</b>					27,000		27,810		28,644		29,504
<b>2300 Reserve for Vehicle Replacement</b>					45,000		46,350		47,741		49,173
<b>5170 Vehicle Maintenance</b>					7,500		7,725		7,957		8,195
<b>5260 Computer Annual Maintenance (Database Export)</b>					9,000		9,270		9,548		9,835
					<b>\$88,500</b>		<b>\$91,155</b>		<b>\$93,890</b>		<b>\$96,706</b>
<b>Annual Totals</b>					<b><u>\$2,455,825</u></b>		<b><u>\$2,544,837</u></b>		<b><u>\$2,621,360</u></b>		<b><u>\$2,697,131</u></b>
<b>Four Year Cost</b>											
<b>Average Per Year</b>											



# Conclusion

- ▶ **County Police have been YOUR police for 3 ½ years**
  - All former Town police officers were hired by the County Police
  - All community policing programs have been continued and will be continued
  - County Police have been working closely with Town government and community groups to ensure law enforcement expectations are met



# Conclusion

- ▶ **County Police have been YOUR police for 3 ½ years**
  - Residents have been satisfied with County Police service
  - County Police have been and will continue to be responsive to the needs of the community



# Conclusion

## Partners in Service to the Community



Westchester  
gov.com





