



AZEK TRIM | #1 BRAND OF TRIM

Offering the unequalled combination of Uniformity, Durability, Workability and Beauty, AZEK Trim looks and feels like real wood, yet requires low maintenance to provide lasting curb appeal.

AZEK Trim products are available in many dimensions and sizes, most in both Traditional (smooth) and Frontier (rustic texture). With a building code listing (ESR-1074), AZEK Trim products can be worked similar to wood - even mitered, routed and turned on a lathe. For custom applications, AZEK Trim products can be laminated and heat formed to create curves. AZEK To Mill offers a true 1 1/4" profile that is perfect for fabrication and OEMs.

AZEK TRIM PRODUCTS

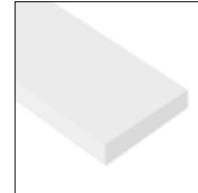
By thickness, width, and length

5/8 TRIM Traditional & Frontier		LENGTHS	
		12'	18'
ACTUAL DIMENSIONS	5/8 x 3 1/2"	•	•
	5/8 x 5 1/2"	•	•
	5/8 x 7 1/4"	•	•
	5/8 x 9 1/4"	•	•
	5/8 x 11 1/4"	•	•
	5/8 x 15 1/4"	•	•

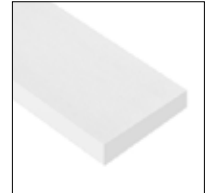
4/4 TRIM Traditional & Frontier		LENGTHS	
		12'	18'
NOMINAL DIMENSIONS	1 x 2		•
	1 x 4	•	•
	1 x 5	•	•
	1 x 6	•	•
	1 x 8	•	•
	1 x 10	•	•
	1 x 12	•	•
	1 x 16	•	•

READY RAKE®	LENGTH
1 x 3 on 1 x 8	18'

QUICK CORNER®	LENGTH
6 x 6 corner with 13/16 J-Channel	20'



Trim - Traditional



Trim - Frontier



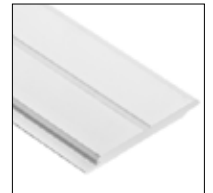
Finish Grade Trim



Universal Skirt Board



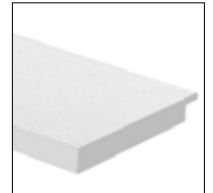
5/8" B beadboard



1/2" B beadboard



Integrated Drip Edge



Rabbeted Trim



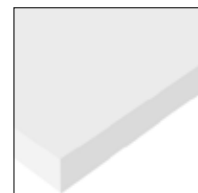
Cornerboards



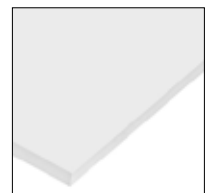
Rabbeted Cornerboards



Column Wrap



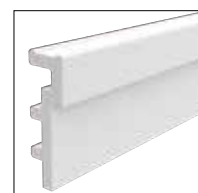
AZEK To Mill (ATM)



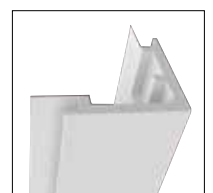
AZEK Sheets



AZEK Adhesive



ReadyRake®



QuickCorner®



AZEK TRIM | #1 BRAND OF TRIM

Offering the unequalled combination of Uniformity, Durability, Workability and Beauty, AZEK Trim looks and feels like real wood, yet requires low maintenance to provide lasting curb appeal. Using traditional tools and fasteners,

5/4 TRIM Traditional & Frontier		LENGTHS		
		12'	18'	20'
NOMINAL DIMENSIONS	5/4 x 4	•	•	•
	5/4 x 5	•	•	•
	5/4 x 6	•	•	•
	5/4 x 8	•	•	•
	5/4 x 10	•	•	•
	5/4 x 12	•	•	•
	5/4 x 16	•	•	•

SHEET Traditional Only		LENGTHS				
		8'	10'	12'	18'	20'
ACTUAL DIMENSIONS	3/8" x 4'	•	•			
	1/2" x 4'	•	•			
	5/8" x 4'	•	•		•	
	3/4" x 4'	•	•	•	•	
	1" x 4'	•	•	•		•

6/4 TRIM Frontier Only		LENGTH
		20'
NOMINAL DIMENSIONS	6/4 x 4	•
	6/4 x 6	•
	6/4 x 8	•
	6/4 x 10	•
	6/4 x 12	•

CORNERBOARD Traditional & Frontier		LENGTHS	
		10'	20'
NOMINAL DIMENSIONS	5/4 x 4 x 4	•	•
	5/4 x 6 x 6	•	•
	6/4 x 4 x 4	•	
	6/4 x 6 x 6	•	

UNIVERSAL SKIRT BOARD Traditional & Frontier		LENGTH
		18'
NOMINAL DIMENSIONS	5/4 x 6	•
	5/4 x 8	•
	5/4 x 10	•

5/4 RABBETED TRIM Traditional & Frontier		LENGTH
		18'
NOMINAL DIMENSIONS	5/4 x 4	•
	5/4 x 6	•
	5/4 x 8	•

RABBETED CORNERBOARD Traditional & Frontier		LENGTHS	
		10'	20'
NOMINAL DIMENSIONS	5/4 x 4 x 4	•	•
	5/4 x 6 x 6	•	•
	5/4 x 8 x 8 (Trad only)	•	•

BEADBOARD		LENGTH
		18'
NOMINAL DIMENSIONS	5/8" x 3 1/2"	•
	1/2" x 5 1/2"	•

AZEK TO MILL (ATM)		LENGTHS	
		8'	18'
NOMINAL DIMENSIONS	1 1/4" x 9 1/4"		•
	1 1/4" x 48"	•	

FINISH GRADE TRIM Traditional		LENGTH
		18'
NOMINAL DIMENSIONS	6/4 x 4	•
	6/4 x 6	•
	3" x 3" Mitre Key Corner Reinforcement	

INTEGRATED DRIP EDGE Traditional & Frontier		LENGTH
		18'
NOMINAL DIMENSIONS	5/4 x 4	•
	5/4 x 6	•

COLUMN WRAP Traditional		LENGTH
		10'
NOMINAL DIMENSIONS	4 x 4	•
	6 x 6	•
	8 x 8	•

AZEK ADHESIVE	
BOTTLE SIZE	4 oz.
	8 oz.
	16 oz.
	32 oz.
	128 oz.
	5 gal.



AZEK MOULDING | THE LOOK AND FEEL OF AZEK TRIM

High performing wood replacement mouldings available in a variety of profiles. A perfect match to AZEK Trim, AZEK Mouldings are known for longevity and durability. They won't split or rot and can be installed using traditional tools and fasteners.

AZEK Mouldings - Most can be heat formed to create curved moulding details.



3" Crown



4" Crown



5" Crown

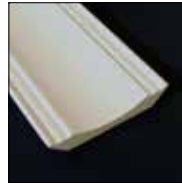


6" Crown

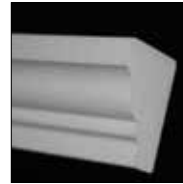


8" Crown

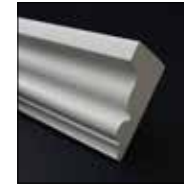
MOULDING PROFILES	SIZES
3" Crown	$\frac{9}{16}" \times 2\frac{3}{4}" \times 16'$
4" Crown	$\frac{9}{16}" \times 3\frac{5}{8}" \times 16'$
5" Crown	$\frac{11}{16}" \times 4\frac{5}{8}" \times 16'$
6" Crown	$\frac{11}{16}" \times 5\frac{1}{4}" \times 16'$
8" Crown	$1" \times 7\frac{1}{2}" \times 16'$
Cove Moulding	$\frac{3}{4}" \times 4\frac{1}{4}" \times 16'$
Rams Crown	$1\frac{13}{32}" \times 2\frac{1}{16}" \times 16'$
Imperial/Rake Crown	$1\frac{3}{8}" \times 2\frac{3}{4}" \times 16'$
Bed Moulding	$\frac{9}{16}" \times 1\frac{3}{4}" \times 16'$
3 1/2" Bed Moulding	$1\frac{13}{16}" \times 3\frac{1}{2}" \times 16'$
Scotia	$\frac{3}{4}" \times \frac{3}{4}" \times 16'$
Quarter Round	$\frac{3}{4}" \times \frac{3}{4}" \times 16'$
Shingle Mould	$\frac{11}{16}" \times 1\frac{5}{8}" \times 16'$
Band Moulding	$\frac{11}{16}" \times 1\frac{5}{8}" \times 16'$
Wainscot Cap	$1" \times 2\frac{1}{4}" \times 16'$
Base Cap	$\frac{11}{16}" \times 1\frac{1}{8}" \times 16'$
Brick Mould	$1\frac{1}{4}" \times 2" \times 17'$ $1\frac{1}{4}" \times 2" \times 18'$ (full units only)
Back Band	$1\frac{11}{32}" \times 1\frac{3}{16}" \times 16'$
Rake Moulding	$1\frac{1}{16}" \times 2" \times 16'$
Adams Casing	$1\frac{1}{16}" \times 3\frac{1}{2}" \times 16'$
Colonial Base Cap	$\frac{3}{4}" \times 5\frac{1}{4}" \times 16'$
Fluted/Reeded Casing	$\frac{15}{16}" \times 5\frac{1}{4}" \times 16'$
Crosshead Pediment	$2\frac{13}{32}" \times 7\frac{1}{8}" \times 18'$ - w/flange $2\frac{13}{32}" \times 6\frac{1}{8}" \times 18'$ - w/o flange
1 1/2" Square	$1\frac{1}{2}" \times 1\frac{1}{2}" \times 12'$
Drip Cap	$\frac{11}{16}" \times 1\frac{5}{8}" \times 16'$
Water Table	$2\frac{3}{4}" \times 2" \times 18'$
Historic Sill	$1\frac{3}{4}" \times 2\frac{1}{32}" \times 16'$
Sub Sill Nose	$1\frac{17}{32}" \times 1\frac{1}{2}" \times 1\frac{3}{8}" \times 16'$
Garage Door Thermostop	$\frac{7}{8}" \times 2" \times 7', 9', \text{ \& } 16'$



Cove Moulding



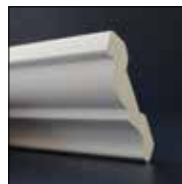
Rams Crown



Imperial/Rake Crown



Bed Moulding



3 1/2" Bed Moulding



Scotia



Quarter Round



Shingle Mould



Band Moulding



Wainscot Cap



Base Cap



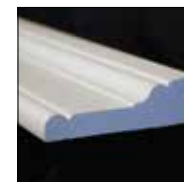
Brick Mould



Back Band



Rake Moulding



Adams Casing



Colonial Base Cap



Fluted Reeded Casing



Crosshead Pediment



1 1/2" Square Profile



Drip Cap



Water Table



Historic Sill



Sub Sill Nose



Garage Door Thermostop

AZEK Product Line | DECK & PORCH



AZEK DECK | #1 BRAND OF CAPPED POLYMER DECK

Resists stains, scratches and splits for a smart and beautiful low maintenance deck. Available in 14 colors and several grains to suit any taste and complement any exterior.

Vintage Collection®



Dark Hickory Cypress Mahogany

Arbor Collection®

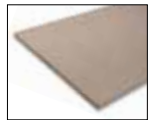


Hazelwood™ NEW! Acacia® NEW! Morado® Silver Oak® Mountain Redwood™ Brazilian Walnut

Harvest Collection®



NEW! Kona® Slate Gray Brownstone Island Oak™ Autumn Chestnut™



DECK PRODUCTS	Square Shouldered Lengths			Grooved Lengths			Fascia 1/2" x 11 3/4"
All Deck Boards 1" x 5 1/2"	12'	16'	20'	12'	16'	20'	12'
Harvest Collection® (New Kona®)	•	•	•				•
Harvest Collection® (Brownstone & Slate Gray)	•	•	•	•	•	•	•
Harvest Collection® (Island Oak™ & Autumn Chestnut)		•	•	•	•	•	•
Arbor Collection® (Silver Oak®, Hazelwood®, New Acacia®, New Morado®, Brazilian Walnut, Mountain Redwood™)		•	•	•	•	•	•
Vintage Collection® (Dark Hickory, Cypress, Mahogany)		•	•	•	•	•	•



AZEK PORCH | TRADITIONAL LOOK, LOW MAINTENANCE

Available in five popular shades, offers stain and scratch resistance in a traditional tongue and groove board.

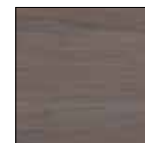
PORCH PRODUCTS	Lengths		
All Porch Boards 1" x 3 1/8"	10'	12'	16'
Brownstone	•	•	•
Slate Gray	•	•	•
Morado®		•	•
Silver Oak®		•	•
Oyster®		•	•



Porch Board



Morado®



Silver Oak®



Oyster®



Brownstone



Slate Gray



AZEK FASTENING | REDUCE HARDWARE VISIBILITY

AZEK offers a variety of fastening options that are either completely hidden from view or color matched to minimize the visibility as much as possible for a clean overall look.

FUSIONLoc™



FUSIONLoc™ Grooved Profiles Only	CONTENTS	COVERAGE
225 sq. ft. box	400 clips, fasteners, 1 bit	225 sq. ft.
450 sq. ft. box	800 clips, fasteners, 1 bit	450 sq. ft.

CONCEALoc™



CONCEALoc™ HIDDEN FASTENERS Grooved Profiles Only	CONTENTS	COVERAGE
Retail Cartons	175 Fasteners 184 Screws Drive Bit	100 sq. ft.
Gun Pail	900 Fasteners with Collated Pneumatic Screws	500 sq. ft.
Bulk Bucket	1,750 Fasteners	1,000 sq. ft.

CORTEX®



CORTEX®	CONTENTS	
	100 sq. ft.	300 sq. ft.
Harvest, Arbor, and Vintage	•	•

*Available through FastenMaster



AZEK RAIL | BEAUTY, STRENGTH, AND LASTING DURABILITY

AZEK Rail offers the look and feel of wood coupled with high durability and low maintenance.

Premier Rail

Reserve Rail

Trademark Rail



Slate Gray



Brownstone



Kona®



Black



White



White



White

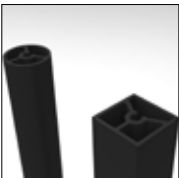
Impression Rail



Black



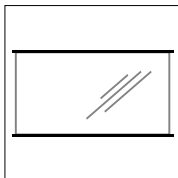
Composite Baluster



Aluminum Round & Square Balusters



Cable



Glass Kit
Glass not included



Top and Support Rail
(Premier)



Top and Support Rail
(Reserve)



Top and Support Rail
(Trademark)



5.5 x 5.5 Post



6 x 6 Post



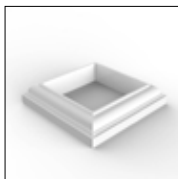
Secure Mount Post



Pyramid Cap



Island Cap



Post Skirt



Lighted Island Cap



Post Cap Module



Riser Light



In-Deck Light



Accent Light



Under Rail Light



ADA Hand Rail and
Accessories



Example of ADA
Accessory Items

AZEK Rail is available in four distinct profiles:

AZEK Premier

The classic Victorian railing.

Colors include:

- White
- Brownstone
- Slate Gray
- Kona®
- Black

AZEK Trademark

Colonial look that works well with any housing style.

Available in White.

AZEK Reserve

Generously sized railing that offers a luxurious look and feel. Available in White.

Impression Rail - Dual Branded

Classic aluminum railing that provides unobstructed views and easy installation



AZEK RAIL | BEAUTY, STRENGTH, AND LASTING DURABILITY

AZEK Rail offers the look and feel of wood coupled with high durability and low maintenance.

PREMIER RAIL Available in White, Black, Brownstone, Slate Gray, Kona®	LENGTHS		
	6'	8'	10'*
Rail Pack	•	•	•
Custom Rail Pack	•	•	•
36" and 42" Rail Kits (White Only)	•	•	•

TRADEMARK RAIL Available in White	LENGTHS		
	6'	8'	10'
Rail Pack	•	•	•
Custom Rail Pack	•	•	•
36" and 42" Rail Kits	•	•	•

RESERVE RAIL KITS Available in White	LENGTHS				
	6'	8'	10'	12'	16'
Rail Pack	•	•	•		
5 1/2" Top Rail	•	•	•	•	•

IMPRESSION RAIL Available in Black	LENGTHS		
	6'	8'	10'
Level Rail Kit 36"	•	•	•
Stair Rail Kit 36"		•	
Level Rail Kit 42"	•	•	•
Stair Rail Kit 42"		•	

IMPRESSION RAIL POST KITS With Cap and Skirt	LEVEL RAIL HEIGHTS	
	36"	42"
Post Kit 2" x 2" x 37"	•	
Post Kit 3" x 3" x 38"	•	
Post Kit 2" x 2" x 43"		•
Post Kit 2" x 2" x 54"		•
Post Kit 3" x 3" x 44"		•
Post Kit 3" x 3" x 54"		•
Over the Post Level Rail 2" x 2"	•	
Over the Post Stair Rail 2" x 2"	•	

UNIVERSAL GATE KITS Premier & Trademark Rail	Height
White	•
Black	•

LIGHTING ACCESSORIES
5.5" LED Post Cap Light
Riser Light
Accent Light
In-Deck Light
Under-Rail Light
Transformer (12V, 100W)
100 Ft Wire 16/2
Wire Guides

ADA HANDRAIL & ACCESSORIES All AZEK Rail Profiles
1.5" Dia. Straight Rail, 104" Length
Handrail Bracket
Straight Joiner
Adjustable Joiner
Straight Wall Return
Post Return
90 Degree Corner
90 Degree Inside Corner Bracket
Wall Return with Cover Plate
Joint Rings
End Loop
Rail End Caps

* Only available in Black and White



AZEK RAIL | BEAUTY, STRENGTH, AND LASTING DURABILITY

AZEK Rail offers the look and feel of wood coupled with high durability and low maintenance.

UNIVERSAL PARTS

For Premier, Trademark and Reserve

POST SLEEVES	LENGTHS			
	39"	54"	108"	144"
5.5 x 5.5 Post Sleeve - White	•	•		•
5.5 x 5.5 Post Sleeve - Black	•	•		•
5.5 x 5.5 Post Sleeve - Brownstone	•	•		•
5.5 x 5.5 Post Sleeve - Slate Gray	•	•		•
5.5 x 5.5 Post Sleeve - Kona®	•	•		•
4 x 4 Post Sleeve - White	•			
6 x 6 Post Sleeve - White			•	

ACCESSORIES	COLORS				
	White	Black	Brownstone	Slate Gray	Kona®
4 x 4 Post Skirt	•				
5.5 x 5.5 Pyramid Cap	•	•	•	•	•
5.5 x 5.5 Island Cap	•	•	•	•	•
5.5 x 5.5 Post Skirt - 1 Pc	•	•	•	•	•
6 x 6 Island Cap	•				
6 x 6 Post Skirt - 2 Pc	•				
5.5 x 5.5 Lighted Island Cap	•	•	•	•	•

HARDWARE
Universal Hardware Kit
Baluster Fastener Kit

SECURE MOUNT POST
4" Post
6" Post Attachment
Deck Mounting Kit

GLASS	COLORS	
	White	Black
6' Glass Channel	•	•

ALUMINUM BALUSTERS (20/Pack)
42" - Straight*
42" - Stair
36" - Straight*
36" - Stair

BALUSTERS* (18/pack)	LENGTHS	
	36"	42"
White	•	•
Black	•	•
Brownstone	•	•
Slate Gray	•	•
Kona®	•	•
Reserve White	•	•

CABLERAIL
100' Stainless Steel Cable
500' Stainless Steel Cable
36" Hardware Kit
42" Hardware Kit
36" Intermediate Baluster
42" Intermediate Baluster
36" Stair Intermediate Baluster
42" Stair Intermediate Baluster
Accessory Kit
Cable Cutters
Protector Sleeves (Pack of 20)

UNIVERSAL PARTS

Impression Rail

ACCESSORIES	SIZES				
	45"	22 1/2"	4"	2"	3"
Level Rail Bracket Kit (set of 4)	•	•			
Level Rail Site Cut Bracket Kit (set of 4)			•		
Fixed Stair Rail Bracket Kit (set of 4)					
Adjustable Stair Rail Bracket Kit (set of 4)					
Fastener Kit for Composite Posts and Top Rails					
Installation Tool					
Touch Up Paint					
Mounting Plate				•	•

* Also available in heights to provide a less than 2" gap from deck surface to bottom rail.



AZEK PAVERS | PAVERS, REINVENTED

Combining recycled materials with cutting-edge technology, AZEK Pavers are the most advanced segmented paving system in the world.



Redwood



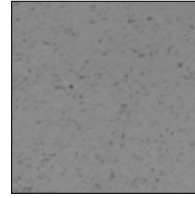
Boardwalk



Olive



Village



Waterwheel



Standard Pavers/Grid



Permeable Pavers/Grid



Resurfacing Pavers/Grid



Close-up of Grid

Engineered to resist cracking and staining, AZEK Pavers provide long lasting good looks and are guaranteed for life not to crack under normal use (residential applications only).

AZEK Pavers use a patented grid system that dramatically reduces installation time and takes the frustration and difficulty out of manually setting and aligning heavy concrete pavers. AZEK Pavers are perfect for projects such as:

- Patios and Walkways
- Driveways and Parking Lots
- Resurfacing Decks and Patios
- Flat Roof Applications
- Commercial Projects
- Storm Water Management

Made from up to 95% recycled materials, AZEK Pavers help projects earn LEED certification easier than any other pavement. AZEK Pavers outperform other pavers in LEED contribution, such as concrete pavers with fly ash, by more than 10 times.



Standard Soldier Wedge Paver



Standard Soldier Full Paver



Resurfacing Transitional Paver



Resurfacing Bullnose Paver



Shown:
Standard 8x8 Paver, Standard 4x8 Paver
and Standard 4x4 Paver on Grid

PAVER PRODUCTS	STANDARD 2.38" height	RESURFACING 1.75" height	PERMEABLE 2.38" height	COLOR OPTIONS				
				Redwood	Boardwalk	Olive	Village	Waterwheel
4" x 8"	•	•	•	•	•	•	•	•
8" x 8"	•	•		•	•	•	•*	•
4" x 4"	•	•		•	•	•	•*	•
Bullnose Paver		•		•	•	•	•	•
Transition Paver		•		•	•			•
Soldier Course Wedge	•			•				•
Soldier Course Full	•			•				•
EnkaDrain 3801 Drainage Mat								

* 8"x 8" and 4"x 4" Resurfacing Pavers are not available in Village

Grids are 16"x 16"

All photos are for display purposes only and not for the purpose of validating the suitability or safety of any particular installation or application of the product. Always consult AZEK's Installation Instructions as well as local building codes to ensure proper installation.