
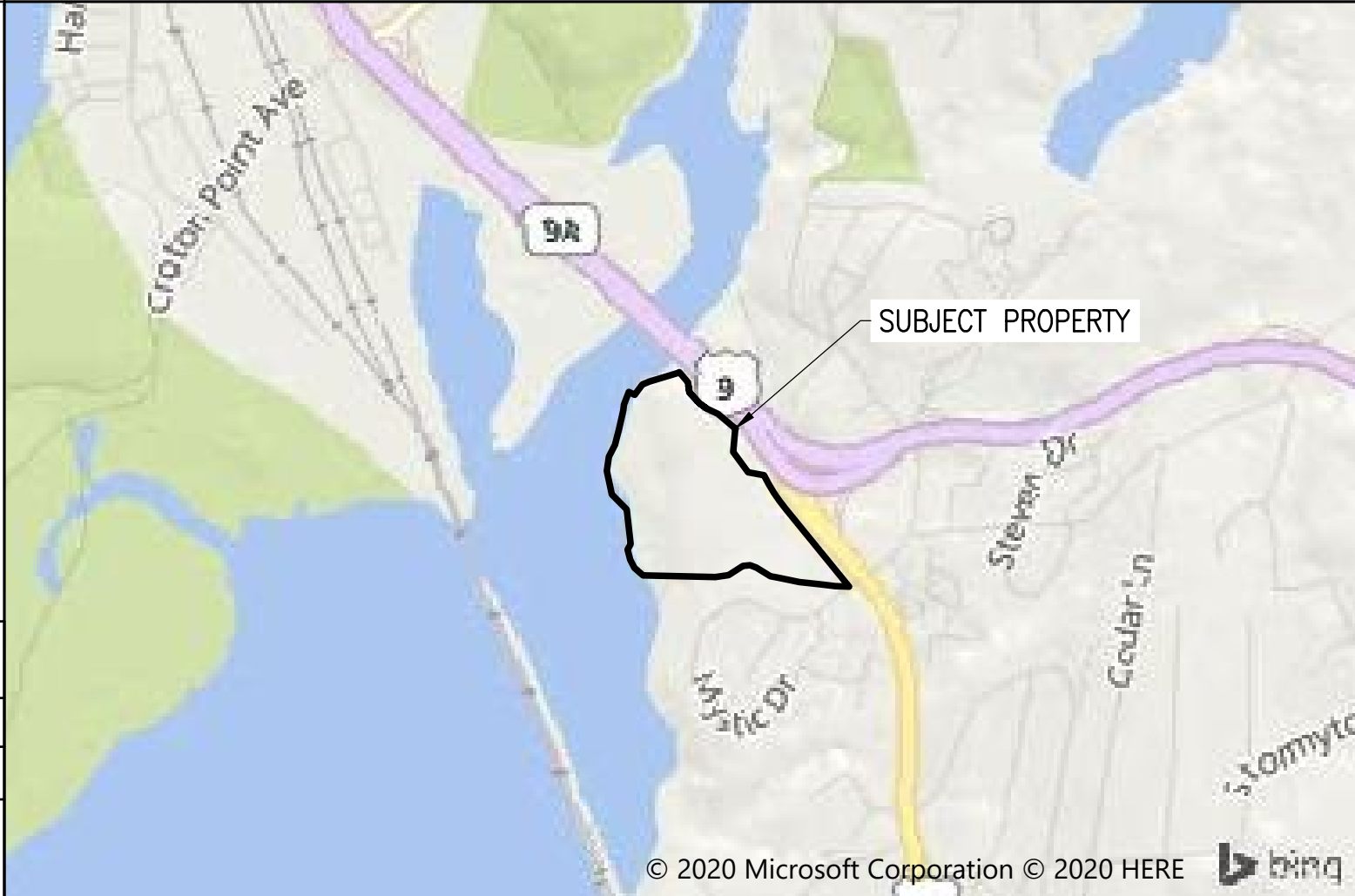

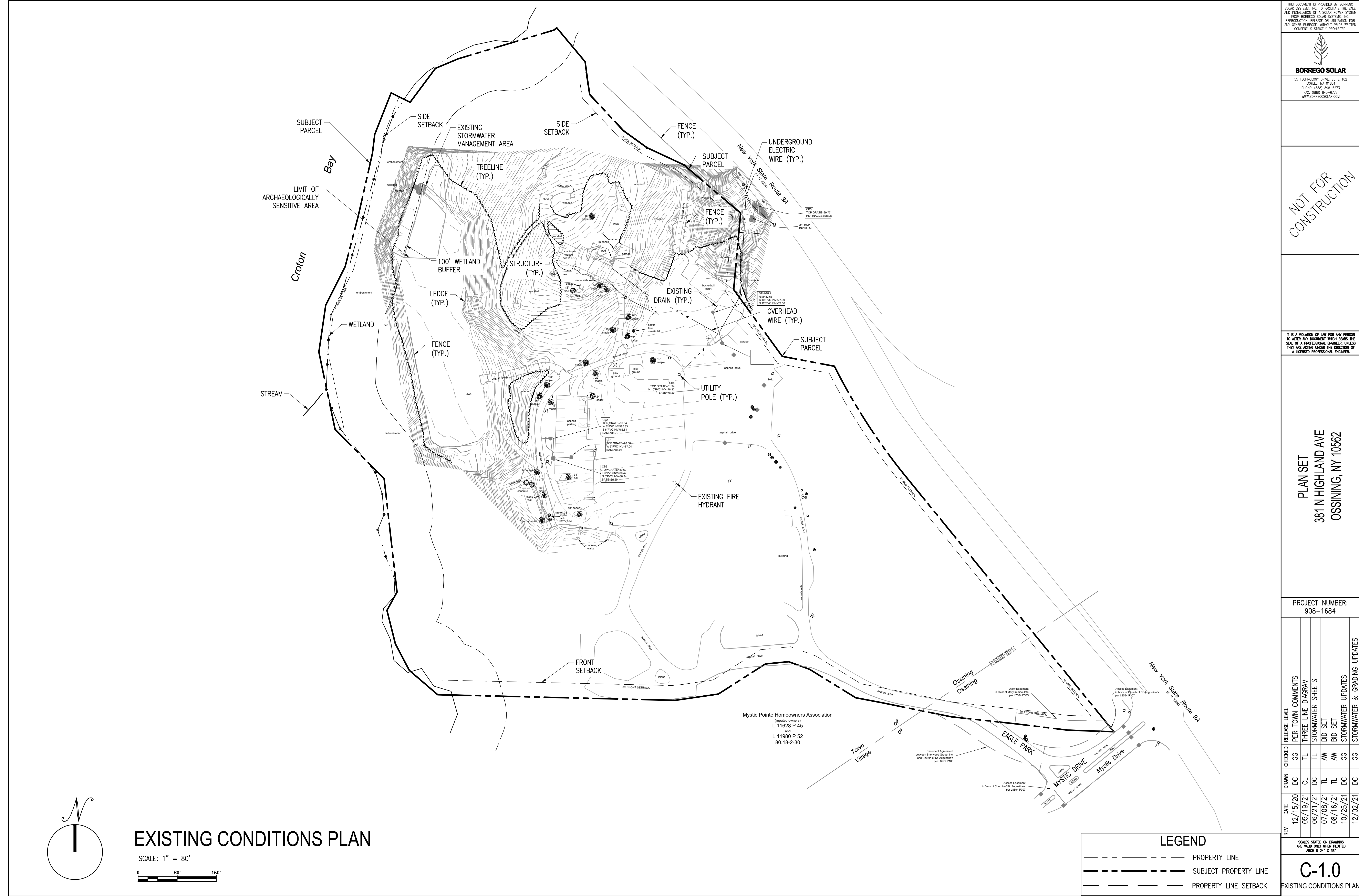


<div><div>SITE USE PERMIT SET</div><div>381 N. HIGHLAND AVE, OSSINING, NY 10562</div><div>4MW/16MWH STC RATED ENERGY STORAGE SYSTEM</div></div>										<div><div><div><div><div><div>THIS DOCUMENT IS PROVIDED BY BORREGO SOLAR SYSTEMS, INC. TO FACILITATE THE SALE AND INSTALLATION OF A SOLAR POWER SYSTEM FROM BORREGO SOLAR SYSTEMS, INC. REPRODUCTION, RELEASE OR UTILIZATION FOR ANY OTHER PURPOSE, WITHOUT PRIOR WRITTEN CONSENT IS STRICTLY PROHIBITED.</div><div></div><div><div>BORREGO SOLAR</div><div>55 TECHNOLOGY DRIVE, SUITE 102 LOWELL, MA 01851 PHONE: (888) 888-6273 FAX: (888) 843-6778 WWW.BORREGOSOLAR.COM</div></div></div></div></div></div></div>																																																																																																													
										NOT FOR CONSTRUCTION																																																																																																													
<div>GENERAL NOTES</div> <div><div><div>1. AS CONTAINED HEREIN, "CONTRACTOR" IS ASSUMED TO BE THE EPC PROVIDER HIRED BY THE SYSTEM/PROJECT OWNER.</div><div>2. WHEN THERE IS A CONFLICT BETWEEN THESE GENERAL NOTES AND THE DRAWINGS, THE DRAWINGS SHALL GOVERN.</div><div>3. ALL WORK SHALL CONFORM TO THE MINIMUM STANDARDS OF THE FOLLOWING: LOCAL BUILDING CODE, LOCAL ELECTRICAL CODE, ANY OTHER REGULATING AGENCIES WHICH HAVE AUTHORITY OVER ANY PORTION OF THE WORK AND THOSE CODES AND STANDARDS LISTED IN THESE DRAWINGS.</div><div>4. THESE DRAWINGS SHALL NOT BE USED FOR CONSTRUCTION. THE CONTRACTOR SHALL BE RESPONSIBLE FOR DEVELOPING A CONSTRUCTION LEVEL DESIGN AND ASSOCIATED DRAWINGS AND DETAILS.</div><div>5. COORDINATE THESE DRAWINGS WITH SPECIFICATIONS AND MANUFACTURER INSTALLATION AND OPERATION MANUALS.</div><div>6. UNLESS OTHERWISE NOTED, THE DESIGN REPRESENTED ON THESE PLANS IS BASED ON THE INFORMATION AND CRITERIA LISTED IN THE "BASIS OF DESIGN" SECTION. IT IS THE RESPONSIBILITY OF THE CONTRACTOR TO VERIFY SUCH INFORMATION IN PREPARATION OF THE CONSTRUCTION DESIGN.</div><div>7. THE EXISTING CONDITIONS REPRESENTED ON THESE PLANS ARE BASED ON PUBLICLY AVAILABLE INFORMATION AND THE SITE DISCOVERY SUMMARIZED IN THESE DRAWINGS. IT IS THE RESPONSIBILITY OF THE CONTRACTOR TO VERIFY THE ACCURACY OF SUCH INFORMATION AND SUPPLEMENT WITH ANY ADDITIONAL REQUIRED INFORMATION.</div><div>8. UNLESS INDICATED AS EXISTING (E), ALL PROPOSED MATERIALS AND EQUIPMENT SHALL BE CONSIDERED TO BE NEW.</div><div>9. ALL EQUIPMENT AND COMPONENTS SHALL BE MOUNTED IN COMPLIANCE WITH THE MANUFACTURER'S REQUIREMENTS, CONSTRUCTION DETAILS, AND/OR PRUDENT INDUSTRY STANDARDS.</div><div>10. TO THE EXTENT THAT TRESS AND OTHER FEATURES AFFECT THE SYSTEM'S PRODUCTION, SUCH PRODUCTION MODELING IS BASED ON THE EXISTING APPROXIMATE HEIGHTS AND LOCATIONS RELATIVE TO THE SYSTEM AND MAY BE IMPACTED AS TREES GROW AND OTHER FEATURES CHANGE.</div></div></div>										<div>PROJECT SCOPE</div> <div>THIS PROJECT CONSISTS OF THE INSTALLATION OF ENERGY STORAGE EQUIPMENT, PER THE SYSTEM DESCRIPTION, BELOW. THE ENERGY STORAGE MODULES WILL BE INSTALLED IN A PURPOSE BUILT UNIT(S), AND FIRE SUPPRESSION SYSTEMS. THE ENERGY STORAGE MODULES WILL BE WIRED IN SERIES STRINGS AND CONNECTED THROUGH DC/DC CONVERTERS, WHICH WILL CONVERT DC TO AC WHILE THE BATTERIES ARE DISCHARGING.</div> <div>ENERGY STORAGE SYSTEM DESCRIPTION</div> <table><tr><td>SYSTEM POWER CAPACITY</td><td>4,000 KWAC</td></tr><tr><td>SYSTEM ENERGY CAPACITY</td><td>16,120 KWH</td></tr><tr><td>POWER CONVERSION SYSTEM / INVERTER</td><td>(2) POWER ELECTRONICS PCSK FP2235K</td></tr></table> <div>TOTAL SYSTEM DESCRIPTION</div> <table><tr><td>TOTAL PV+STORAGE POWER CAPACITY</td><td>4,000 KWAC</td></tr><tr><td>MAXIMUM EXPORT TO UTILITY</td><td>4,000 KWAC</td></tr><tr><td>STORAGE CHARGING MODE</td><td>GRID ONLY</td></tr></table>										SYSTEM POWER CAPACITY	4,000 KWAC	SYSTEM ENERGY CAPACITY	16,120 KWH	POWER CONVERSION SYSTEM / INVERTER	(2) POWER ELECTRONICS PCSK FP2235K	TOTAL PV+STORAGE POWER CAPACITY	4,000 KWAC	MAXIMUM EXPORT TO UTILITY	4,000 KWAC	STORAGE CHARGING MODE	GRID ONLY	<div>LOCATION MAP</div> <div></div> <div>AERIAL VIEW</div> <div></div>										<div>DRAWING LIST</div> <table><tr><th>SHEET NUMBER</th><th>SHEET TITLE</th></tr><tr><td>T-1</td><td>TITLE PAGE</td></tr><tr><td colspan="2">CIVIL</td></tr><tr><td>C-1.0</td><td>EXISTING CONDITIONS PLAN</td></tr><tr><td>C-2.0</td><td>N/A</td></tr><tr><td>C-3.0</td><td>LAYOUT AND MATERIAL PLAN</td></tr><tr><td>C-4.0</td><td>GRADING EROSION AND SEDIMENT CONTROL PLAN</td></tr><tr><td>C-5.0</td><td>CIVIL DETAILS</td></tr><tr><td>C-5.1</td><td>CIVIL DETAILS</td></tr><tr><td>LA100</td><td>LANDSCAPING PLAN (SARATOGA ASSOCIATES)</td></tr></table>										SHEET NUMBER	SHEET TITLE	T-1	TITLE PAGE	CIVIL		C-1.0	EXISTING CONDITIONS PLAN	C-2.0	N/A	C-3.0	LAYOUT AND MATERIAL PLAN	C-4.0	GRADING EROSION AND SEDIMENT CONTROL PLAN	C-5.0	CIVIL DETAILS	C-5.1	CIVIL DETAILS	LA100	LANDSCAPING PLAN (SARATOGA ASSOCIATES)																																																
SYSTEM POWER CAPACITY	4,000 KWAC																																																																																																																						
SYSTEM ENERGY CAPACITY	16,120 KWH																																																																																																																						
POWER CONVERSION SYSTEM / INVERTER	(2) POWER ELECTRONICS PCSK FP2235K																																																																																																																						
TOTAL PV+STORAGE POWER CAPACITY	4,000 KWAC																																																																																																																						
MAXIMUM EXPORT TO UTILITY	4,000 KWAC																																																																																																																						
STORAGE CHARGING MODE	GRID ONLY																																																																																																																						
SHEET NUMBER	SHEET TITLE																																																																																																																						
T-1	TITLE PAGE																																																																																																																						
CIVIL																																																																																																																							
C-1.0	EXISTING CONDITIONS PLAN																																																																																																																						
C-2.0	N/A																																																																																																																						
C-3.0	LAYOUT AND MATERIAL PLAN																																																																																																																						
C-4.0	GRADING EROSION AND SEDIMENT CONTROL PLAN																																																																																																																						
C-5.0	CIVIL DETAILS																																																																																																																						
C-5.1	CIVIL DETAILS																																																																																																																						
LA100	LANDSCAPING PLAN (SARATOGA ASSOCIATES)																																																																																																																						
										<div>IT IS A VIOLATION OF LAW FOR ANY PERSON TO ALTER ANY DOCUMENT WHICH BEARS THE SEAL OF A PROFESSIONAL ENGINEER, UNLESS THEY ARE ACTING UNDER THE DIRECTION OF A LICENSED PROFESSIONAL ENGINEER.</div>																																																																																																													
										<div>PLAN SET</div> <div>381 N HIGHLAND AVE</div> <div>OSSINING, NY 10562</div>																																																																																																													
										<div>PROJECT NUMBER:</div> <div>908-1684</div>																																																																																																													
										<table><tr><td>REV</td><td>DATE</td><td>DRAWN</td><td>CHECKED</td><td>RELEASE LEVEL</td><td>PER TOWN COMMENTS</td></tr><tr><td></td><td>12/15/20</td><td>DC</td><td>GG</td><td>THREE LINE DIAGRAM</td><td></td></tr><tr><td></td><td>05/19/21</td><td>CL</td><td>TL</td><td>STORMWATER SHEETS</td><td></td></tr><tr><td></td><td>06/21/21</td><td>DC</td><td>TL</td><td>AW BID SET</td><td></td></tr><tr><td></td><td>07/08/21</td><td>TL</td><td>AW</td><td>BID SET</td><td></td></tr><tr><td></td><td>08/16/21</td><td>TL</td><td>GG</td><td>STORMWATER UPDATES</td><td></td></tr><tr><td></td><td>10/25/21</td><td>DC</td><td>GG</td><td>STORMWATER & GRADING UPDATES</td><td></td></tr><tr><td></td><td>12/02/21</td><td>DC</td><td></td><td></td><td></td></tr></table>										REV	DATE	DRAWN	CHECKED	RELEASE LEVEL	PER TOWN COMMENTS		12/15/20	DC	GG	THREE LINE DIAGRAM			05/19/21	CL	TL	STORMWATER SHEETS			06/21/21	DC	TL	AW BID SET			07/08/21	TL	AW	BID SET			08/16/21	TL	GG	STORMWATER UPDATES			10/25/21	DC	GG	STORMWATER & GRADING UPDATES			12/02/21	DC																																																							
REV	DATE	DRAWN	CHECKED	RELEASE LEVEL	PER TOWN COMMENTS																																																																																																																		
	12/15/20	DC	GG	THREE LINE DIAGRAM																																																																																																																			
	05/19/21	CL	TL	STORMWATER SHEETS																																																																																																																			
	06/21/21	DC	TL	AW BID SET																																																																																																																			
	07/08/21	TL	AW	BID SET																																																																																																																			
	08/16/21	TL	GG	STORMWATER UPDATES																																																																																																																			
	10/25/21	DC	GG	STORMWATER & GRADING UPDATES																																																																																																																			
	12/02/21	DC																																																																																																																					
<div>APPLICABLE CODES AND STANDARDS</div> <div>2017 NATIONAL ELECTRICAL CODE</div> <div>2020 INTERNATIONAL BUILDING CODE</div> <div>2020 NEW YORK STATE FIRE PREVENTION AND BUILDING CODE</div> <div>2020 NEW YORK STATE UNIFORM CODE SUPPLEMENT</div> <div>UL-1741 - INVERTERS, COMBINER BOXES</div> <div>UL-1642 - STANDARD FOR LITHIUM BATTERIES</div> <div>UL-1973 - STANDARD FOR BATTERIES FOR USE IN LIGHT ELECTRIC RAIL (LER) APPLICATIONS AND STATIONARY APPLICATIONS</div> <div>UL-9540 - STANDARD FOR ENERGY STORAGE SYSTEM AND EQUIPMENT</div> <div>UL-9540A - THERMAL RUNAWAY FIRE PROPAGATION IN BATTERY ENERGY STORAGE SYSTEMS</div>										<div>PROJECT DIRECTORY</div> <div><div>SYSTEM / PROJECT OWNER</div><div>TBD</div><div>LAND OWNER / HOST</div><div>THE CHURCH OF ST. AUGUSTINE</div><div>381 N. HIGHLAND AVE</div><div>OSSINING, NY 10562</div><div>AUTHORITY HAVING JURISDICTION</div><div>TOWN OF OSSINING</div><div>JOHN-PAUL RODRIGUES OPERATIONS CENTER</div><div>101 ROUTE 9A - P.O. BOX 1166</div><div>UTILITY</div><div>CONSOLIDATED EDISON</div></div> <div><div>CIVIL ENGINEER</div><div>FIRM: BORREGO SOLAR SYSTEMS, INC</div><div>CONTACT: GREG GIBBONS, P.E.</div><div>PHONE: 315-378-9567</div><div>ELECTRICAL ENGINEER</div><div>FIRM: BORREGO SOLAR SYSTEMS, INC</div><div>CONTACT: AHARON WRIGHT, P.E.</div><div>PHONE: 978-221-3081</div><div>DESIGN ENGINEER</div><div>FIRM: BORREGO SOLAR SYSTEMS, INC</div><div>CONTACT: TIM LEE, E.I.T.</div><div>PHONE: 978-513-2625</div></div>										<div>GENERAL ABBREVIATIONS</div> <table><tr><td>(E)</td><td>EXISTING</td><td>NS</td><td>NORTH-SOUTH</td></tr><tr><td>AHJ</td><td>AUTHORITY HAVING JURISDICTION</td><td>NTS</td><td>NOT TO SCALE</td></tr><tr><td>AL</td><td>ALUMINUM</td><td>OAE</td><td>OR APPROVED EQUAL</td></tr><tr><td>APPROX</td><td>APPROXIMATE</td><td>OC</td><td>ON CENTER</td></tr><tr><td>ARY</td><td>ARRAY</td><td>OD</td><td>OUTSIDE DIAMETER</td></tr><tr><td>BLDG</td><td>BUILDING</td><td>OFCl</td><td>OWNER FURNISHED CONTRACTOR INSTALLED</td></tr><tr><td>BSS</td><td>BORREGO SOLAR SYSTEM</td><td>PV</td><td>PHOTOVOLTAIC</td></tr><tr><td>CL</td><td>CENTERLINE</td><td>PVC</td><td>POLY VINYL CHLORIDE</td></tr><tr><td>DAS</td><td>DATA ACQUISITION SYSTEM</td><td>SCH</td><td>SCHEDULE</td></tr><tr><td>DIA</td><td>DIAMETER</td><td>SS</td><td>STAINLESS STEEL</td></tr><tr><td>DO</td><td>DITTO</td><td>SSS</td><td>SOLAR SUPPORT STRUCTURE</td></tr><tr><td>EW</td><td>EAST-WEST</td><td>STC</td><td>STANDARD TEST CONDITIONS</td></tr><tr><td>FBO</td><td>FURNISHED BY OTHERS</td><td>TBD</td><td>TO BE DETERMINED</td></tr><tr><td>FF</td><td>FORWARD FACING</td><td>TP</td><td>TAMPER PROOF</td></tr><tr><td>GALV</td><td>GALVANIZED</td><td>TYP</td><td>TYPICAL</td></tr><tr><td>HDG</td><td>HOT DIP GALVANIZED</td><td>UON</td><td>UNLESS OTHERWISE NOTED</td></tr><tr><td>HVAC</td><td>HEATING VENTILATION AND AIR CONDITIONING</td><td>VIF</td><td>VERIFY IN FIELD</td></tr><tr><td>ID</td><td>INSIDE DIAMETER</td><td>WP</td><td>WEATHER PROOF</td></tr><tr><td>MFR</td><td>MANUFACTURER</td><td></td><td></td></tr><tr><td>MOD</td><td>SOLAR MODULE</td><td></td><td></td></tr></table> <div>REV 1.0</div>										(E)	EXISTING	NS	NORTH-SOUTH	AHJ	AUTHORITY HAVING JURISDICTION	NTS	NOT TO SCALE	AL	ALUMINUM	OAE	OR APPROVED EQUAL	APPROX	APPROXIMATE	OC	ON CENTER	ARY	ARRAY	OD	OUTSIDE DIAMETER	BLDG	BUILDING	OFCl	OWNER FURNISHED CONTRACTOR INSTALLED	BSS	BORREGO SOLAR SYSTEM	PV	PHOTOVOLTAIC	CL	CENTERLINE	PVC	POLY VINYL CHLORIDE	DAS	DATA ACQUISITION SYSTEM	SCH	SCHEDULE	DIA	DIAMETER	SS	STAINLESS STEEL	DO	DITTO	SSS	SOLAR SUPPORT STRUCTURE	EW	EAST-WEST	STC	STANDARD TEST CONDITIONS	FBO	FURNISHED BY OTHERS	TBD	TO BE DETERMINED	FF	FORWARD FACING	TP	TAMPER PROOF	GALV	GALVANIZED	TYP	TYPICAL	HDG	HOT DIP GALVANIZED	UON	UNLESS OTHERWISE NOTED	HVAC	HEATING VENTILATION AND AIR CONDITIONING	VIF	VERIFY IN FIELD	ID	INSIDE DIAMETER	WP	WEATHER PROOF	MFR	MANUFACTURER			MOD	SOLAR MODULE			<div>BOUNDARY & TOPOGRAPHIC SURVEY:</div> <div>LAWSON SURVEYING & MAPPING</div> <div>SEPTEMBER 21ST, 2020</div> <div>WETLAND STREAM AND DELINEATION REPORT:</div> <div>GEI CONSULTANTS, INC., P.C.</div> <div>JUNE 2020</div>									
(E)	EXISTING	NS	NORTH-SOUTH																																																																																																																				
AHJ	AUTHORITY HAVING JURISDICTION	NTS	NOT TO SCALE																																																																																																																				
AL	ALUMINUM	OAE	OR APPROVED EQUAL																																																																																																																				
APPROX	APPROXIMATE	OC	ON CENTER																																																																																																																				
ARY	ARRAY	OD	OUTSIDE DIAMETER																																																																																																																				
BLDG	BUILDING	OFCl	OWNER FURNISHED CONTRACTOR INSTALLED																																																																																																																				
BSS	BORREGO SOLAR SYSTEM	PV	PHOTOVOLTAIC																																																																																																																				
CL	CENTERLINE	PVC	POLY VINYL CHLORIDE																																																																																																																				
DAS	DATA ACQUISITION SYSTEM	SCH	SCHEDULE																																																																																																																				
DIA	DIAMETER	SS	STAINLESS STEEL																																																																																																																				
DO	DITTO	SSS	SOLAR SUPPORT STRUCTURE																																																																																																																				
EW	EAST-WEST	STC	STANDARD TEST CONDITIONS																																																																																																																				
FBO	FURNISHED BY OTHERS	TBD	TO BE DETERMINED																																																																																																																				
FF	FORWARD FACING	TP	TAMPER PROOF																																																																																																																				
GALV	GALVANIZED	TYP	TYPICAL																																																																																																																				
HDG	HOT DIP GALVANIZED	UON	UNLESS OTHERWISE NOTED																																																																																																																				
HVAC	HEATING VENTILATION AND AIR CONDITIONING	VIF	VERIFY IN FIELD																																																																																																																				
ID	INSIDE DIAMETER	WP	WEATHER PROOF																																																																																																																				
MFR	MANUFACTURER																																																																																																																						
MOD	SOLAR MODULE																																																																																																																						
										<div>SCALES STATED ON DRAWINGS ARE VALID ONLY WHEN PLOTTED ARCH D 24" X 36"</div>																																																																																																													
										<div>T-1</div> <div>TITLE PAGE</div>																																																																																																													



THIS DOCUMENT IS PROVIDED BY BORREGO SOLAR SYSTEMS, INC. TO FACILITATE THE SALE AND INSTALLATION OF A SOLAR POWER SYSTEM FROM BORREGO SOLAR SYSTEMS, INC. REPRODUCTION, RELEASE, OR UTILIZATION FOR ANY OTHER PURPOSE, WITHOUT PRIOR WRITTEN CONSENT, IS STRICTLY PROHIBITED.



BORREGO SOLAR

55 TECHNOLOGY DRIVE, SUITE 102
LOWELL, MA 01851
PHONE: (888) 898-6273
FAX: (888) 843-6778
WWW.BORREGOSOLAR.COM

NOT FOR
CONSTRUCTION

IT IS A VIOLATION OF LAW FOR ANY PERSON TO ALTER ANY DOCUMENT WHICH BEARS THE SEAL OF A PROFESSIONAL ENGINEER, UNLESS THEY ARE ACTING UNDER THE DIRECTION OF A LICENSED PROFESSIONAL ENGINEER.

PLAN SET
381 N HIGHLAND AVE
OSSINING, NY 10562

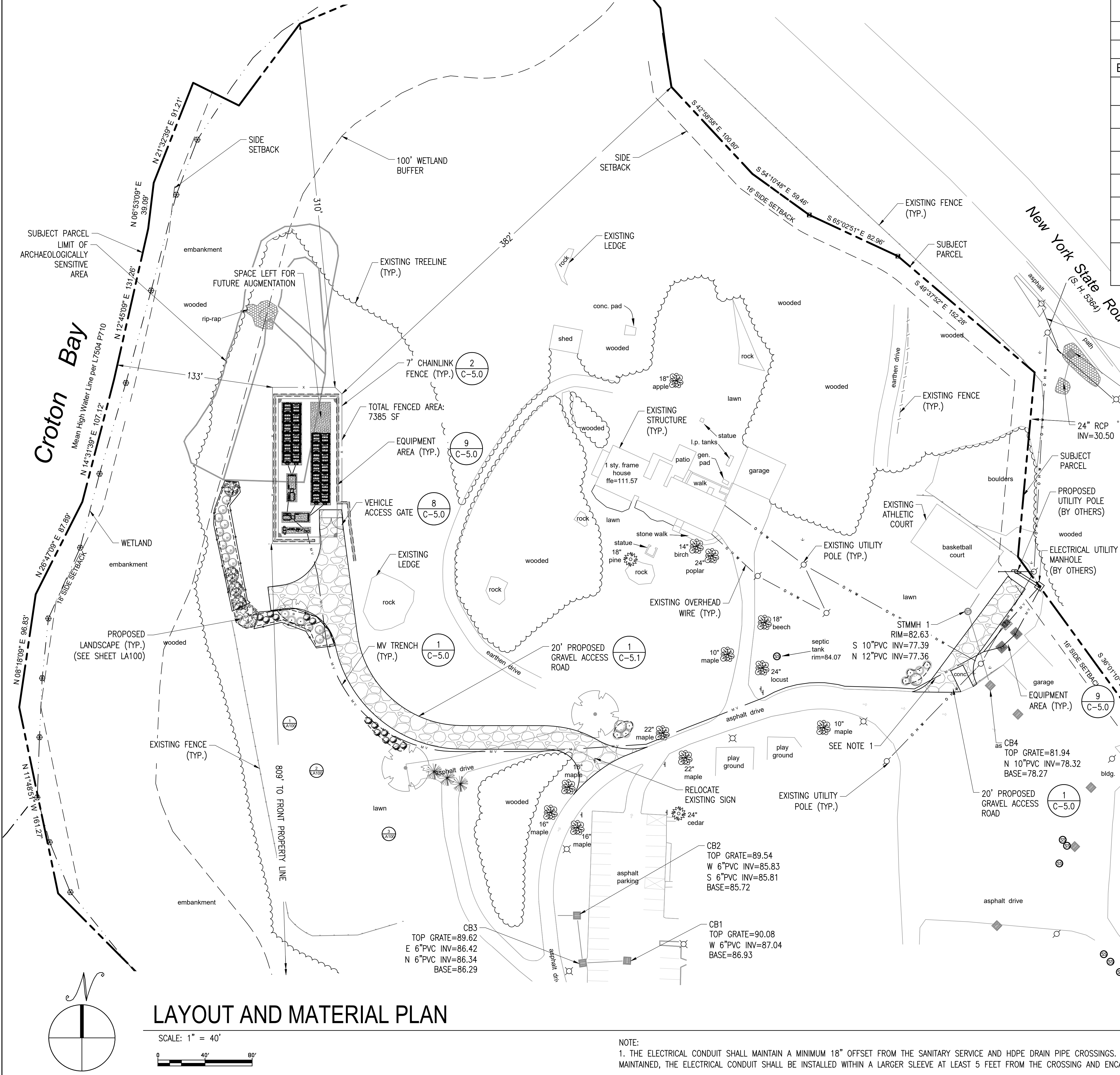
PROJECT NUMBER:
908-1684

REV	DATE	DRAWN	CHECKED	RELEASE LEVEL	PER TOWN COMMENTS
12/15/20	05/19/21	DC	GG	THREE LINE DIAGRAM	
06/21/21	06/21/21	DC	TL	STORMWATER SHEETS	
07/08/21	07/08/21	TL	AW	BID SET	
08/16/21	08/16/21	TL	AW	BID SET	
10/25/21	10/25/21	DC	GG	STORMWATER UPDATES	
12/02/21	12/02/21	DC	GG	STORMWATER & GRADING UPDATES	

SCALES STATED ON DRAWINGS ARE VALID ONLY WHEN PLOTTED ARCH D 24" X 36"

C-1.0

EXISTING CONDITIONS PLAN



ZONING SUMMARY TABLE				
PARCEL NUMBER(S): 80.18-2-1				
ZONING DISTRICT: R-20 ONE-FAMILY RESIDENCE DISTRICT				
BYLAW SECTION	UNITS	REQUIRED	PROVIDED	NOTES
MINIMUM LOT AREA	SQUARE FEET	20,000	1,228,392	NONE
LOT WIDTH	FEET	100	1850	NONE
LOT DEPTH	FEET	130	830	NONE
FRONT YARD	FEET	30	809	FROM FENCE
SIDE YARD	FEET	16	382	FROM FENCE
REAR YARD	FEET	34	310	FROM FENCE
MAX COVERAGE	%	22	1	STRUCTURES
MAXIMUM HEIGHT	FEET	35	10	TOP OF SYSTEM

THIS DOCUMENT IS PROVIDED BY BORREGO SOLAR SYSTEMS, INC. TO FACILITATE THE SALE AND INSTALLATION OF A SOLAR POWER SYSTEM FROM BORREGO SOLAR SYSTEMS, INC. REPRODUCTION, RELEASE, OR UTILIZATION FOR ANY OTHER PURPOSE, WITHOUT PRIOR WRITTEN CONSENT, IS STRICTLY PROHIBITED.

BORREGO SOLAR
55 TECHNOLOGY DRIVE, SUITE 102
LOWELL, MA 01851
PHONE: (988) 808-6273
FAX: (988) 843-6778
WWW.BORREGOSOLAR.COM

IT IS A VIOLATION OF LAW FOR ANY PERSON TO ALTER ANY DOCUMENT WHICH BEARS THE SEAL OF A PROFESSIONAL ENGINEER, UNLESS THEY ARE ACTING UNDER THE DIRECTION OF A LICENSED PROFESSIONAL ENGINEER.

PLAN SET
381 N HIGHLAND AVE
OSSINING, NY 10562

PROJECT NUMBER:
908-1109

REV	DATE	DRAWN	CHECKED	RELEASE LEVEL	PER TOWN COMMENTS
12/15/20	DC	CG	CG	THREE LINE DIAGRAM	
05/19/21	CL	TL	TL	STORMWATER SHEETS	
06/21/21	DC	TL	TL	BID SET	
07/08/21	TL	AW	AW	BID SET	
08/16/21	TL	TL	TL	STORMWATER UPDATES	
10/25/21	DC	CG	CG	STORMWATER & GRADING UPDATES	
12/02/21	DC	CG	CG		

SCALES STATED ON DRAWINGS ARE VALID ONLY WHEN PLOTTED ASH 9 24" X 36"

C-3.0
LAYOUT AND MATERIAL PLAN

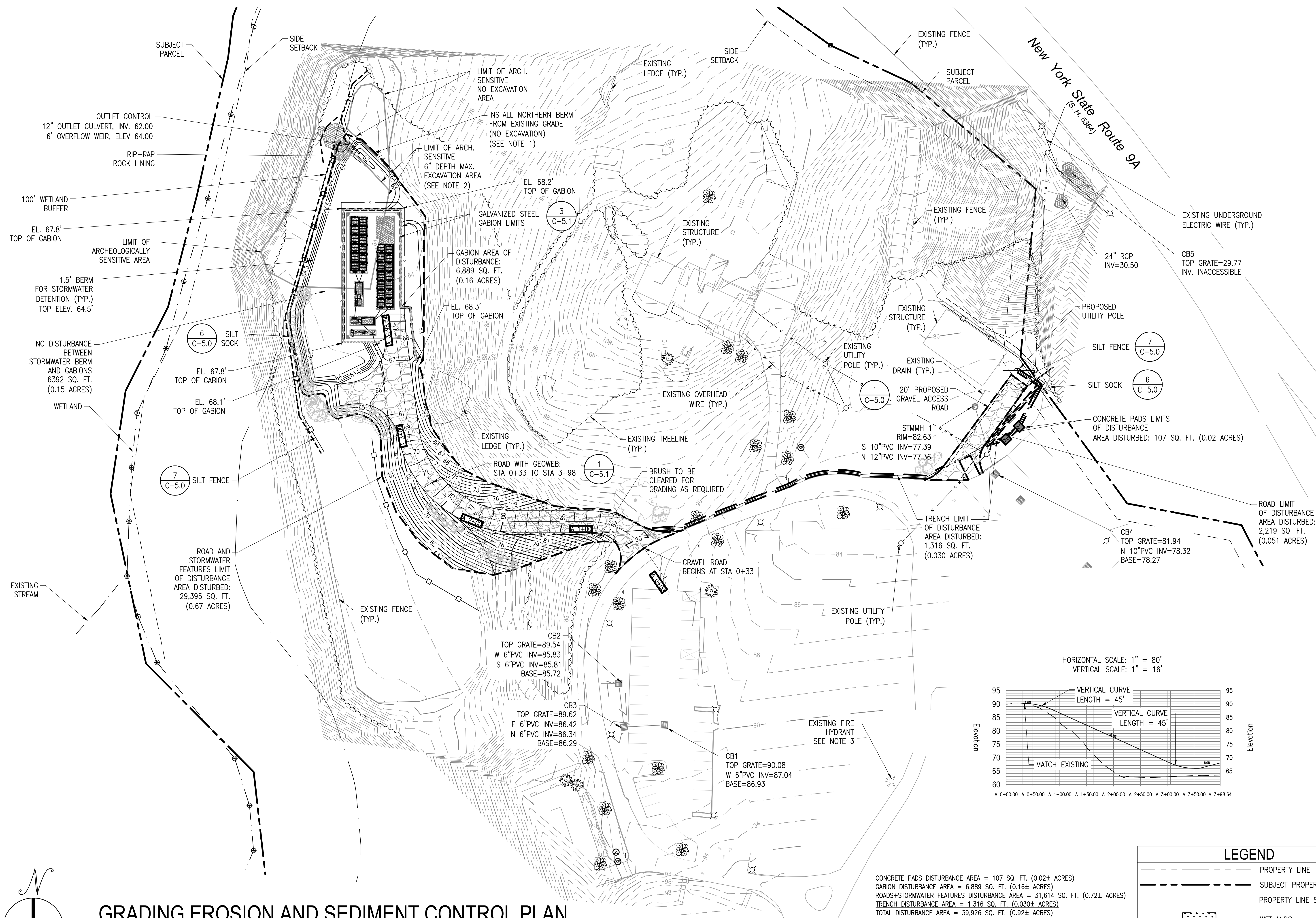
LAYOUT AND MATERIAL PLAN

SCALE: 1" = 40'

NOTE:
1. THE ELECTRICAL CONDUIT SHALL MAINTAIN A MINIMUM 18" OFFSET FROM THE SANITARY SERVICE AND HDPE DRAIN PIPE CROSSINGS. IF THIS OFFSET IS UNABLE TO BE MAINTAINED, THE ELECTRICAL CONDUIT SHALL BE INSTALLED WITHIN A LARGER SLEEVE AT LEAST 5 FEET FROM THE CROSSING AND ENCASED IN A MINIMUM OF 18" OF CONCRETE.

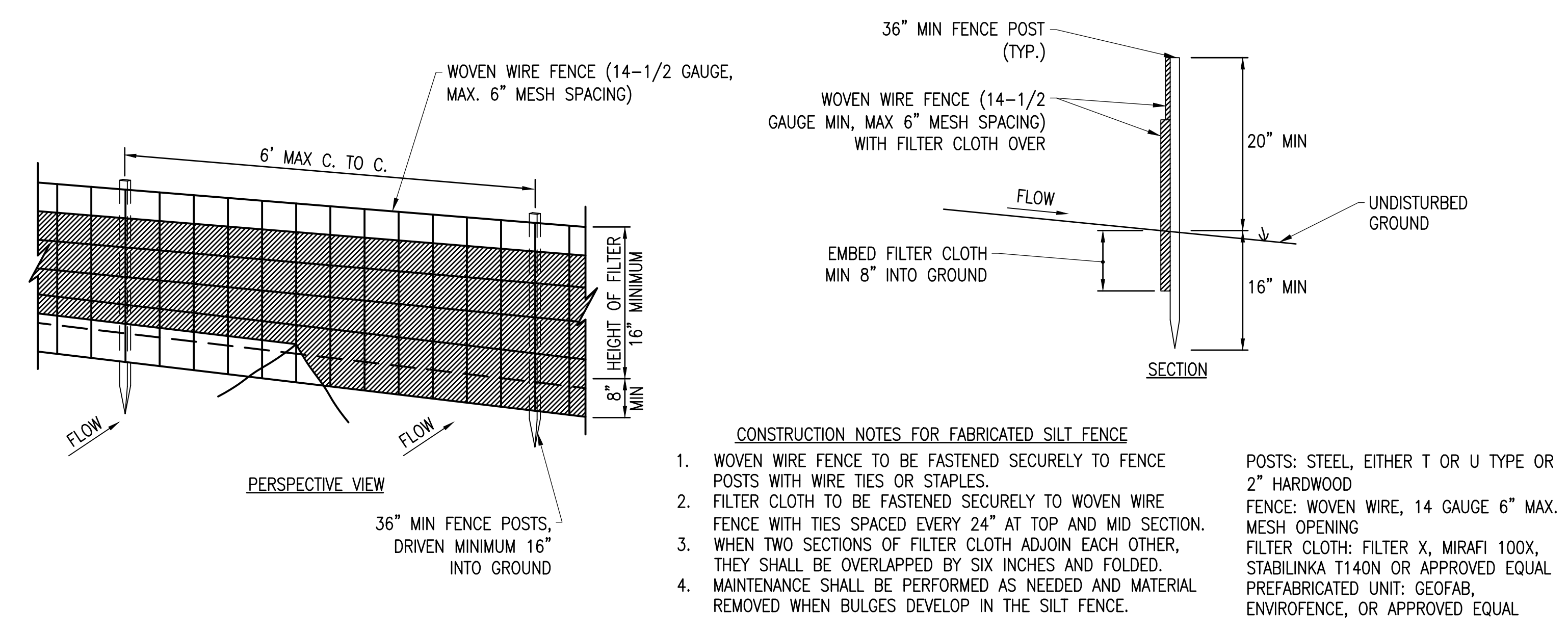
LEGEND	
---	PROPERTY LINE
---	SUBJECT PROPERTY LINE
---	PROPERTY LINE SETBACK

	DATE	DRAWN	CHECKED	RELEASE LEVEL
STORMWATER	02/15/20	DC	GG	PER TOWN COMMENTS
	05/19/21	CL	TL	THREE LINE DIAGRAM
	06/21/21	DC	TL	STORMWATER SHEETS
	07/08/21	TL	AW	BID SET
	08/16/21	TL	AW	BID SET
	10/25/21	DC	GG	STORMWATER UPDATES

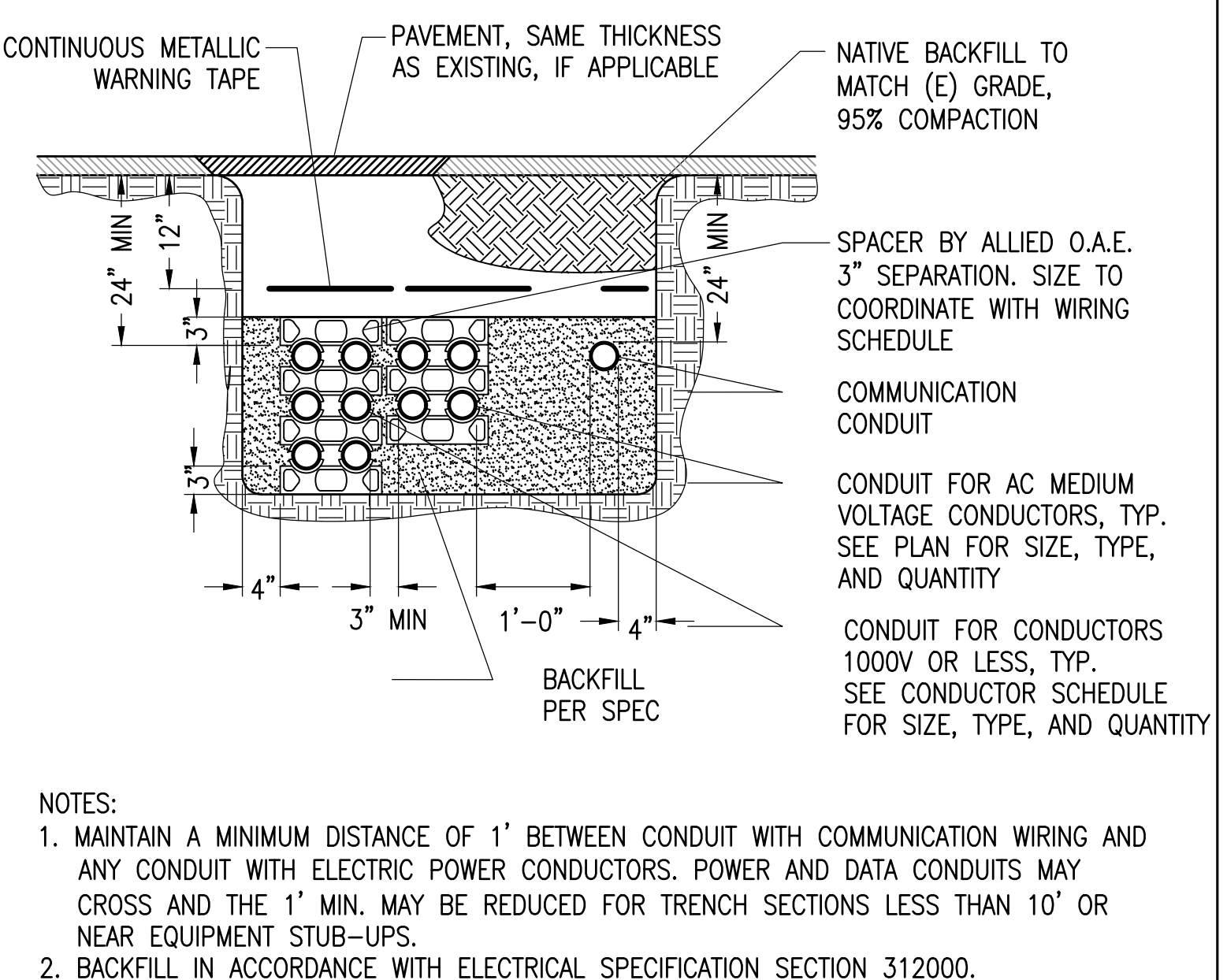


NOTES:

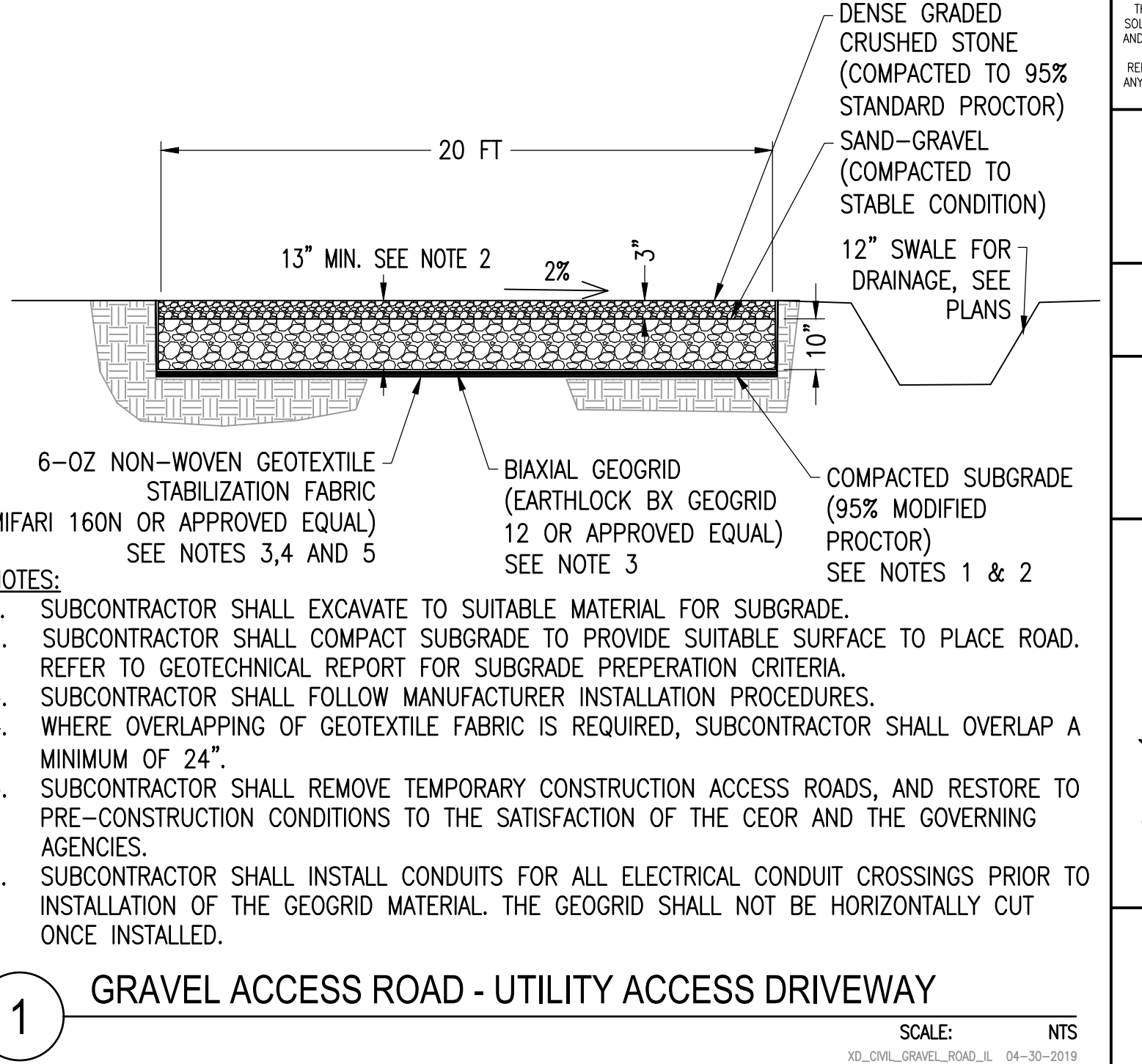
1. NO EXCAVATION ALLOWED WITHIN "NO EXCAVATION AREA" SHOWN ON PLAN. ADD BERM FILL FROM EXISTING GRADE ELEVATION.
2. 6" MAX. EXCAVATION ALLOWED FOR BERM GRADING WITHIN "6" DEPTH MAX. EXCAVATION AREA" SHOWN ON PLAN.
3. TRAVEL DISTANCE FROM ACCESS ROAD TO THE NEAREST FIRE HYDRANT: 510'



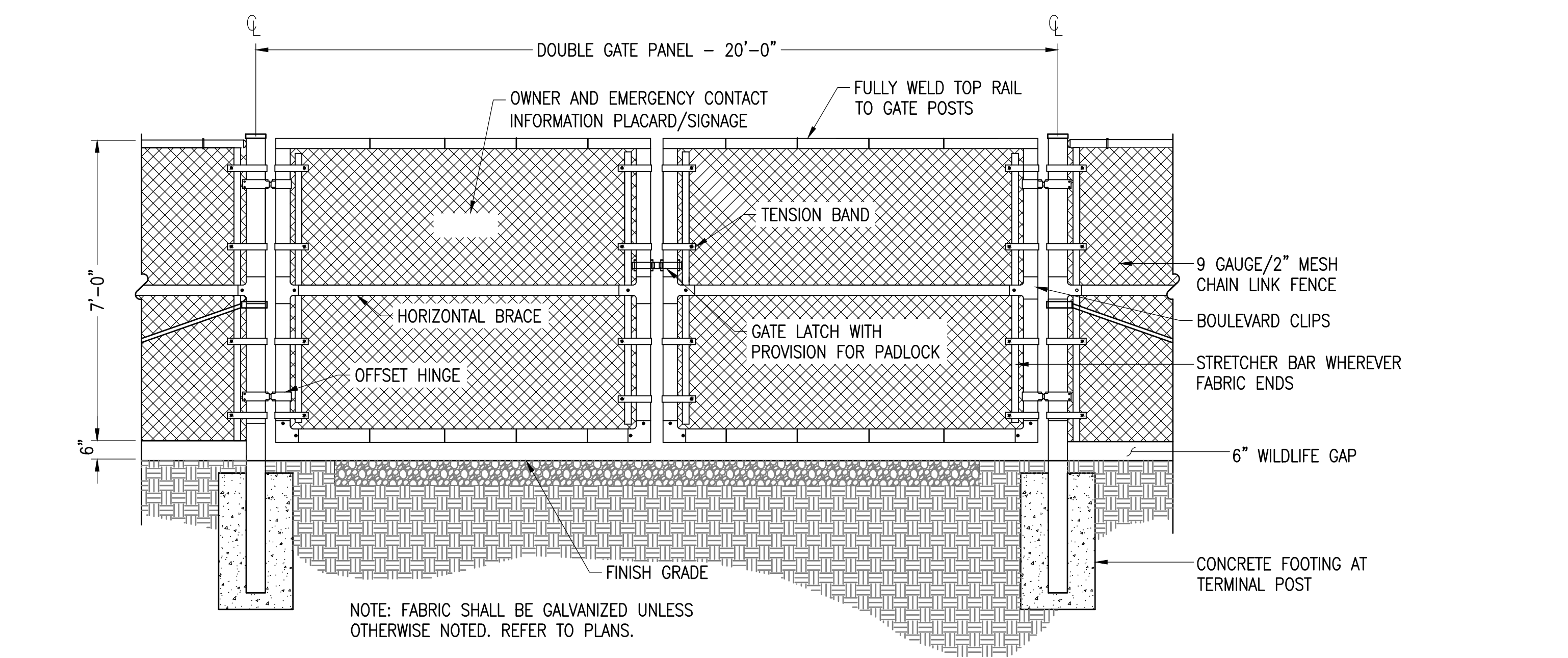
7 **SILT FENCE DETAIL** SCALE: NTS
XD_CML_SILT_FENCE-DETAIL 03-07-2016



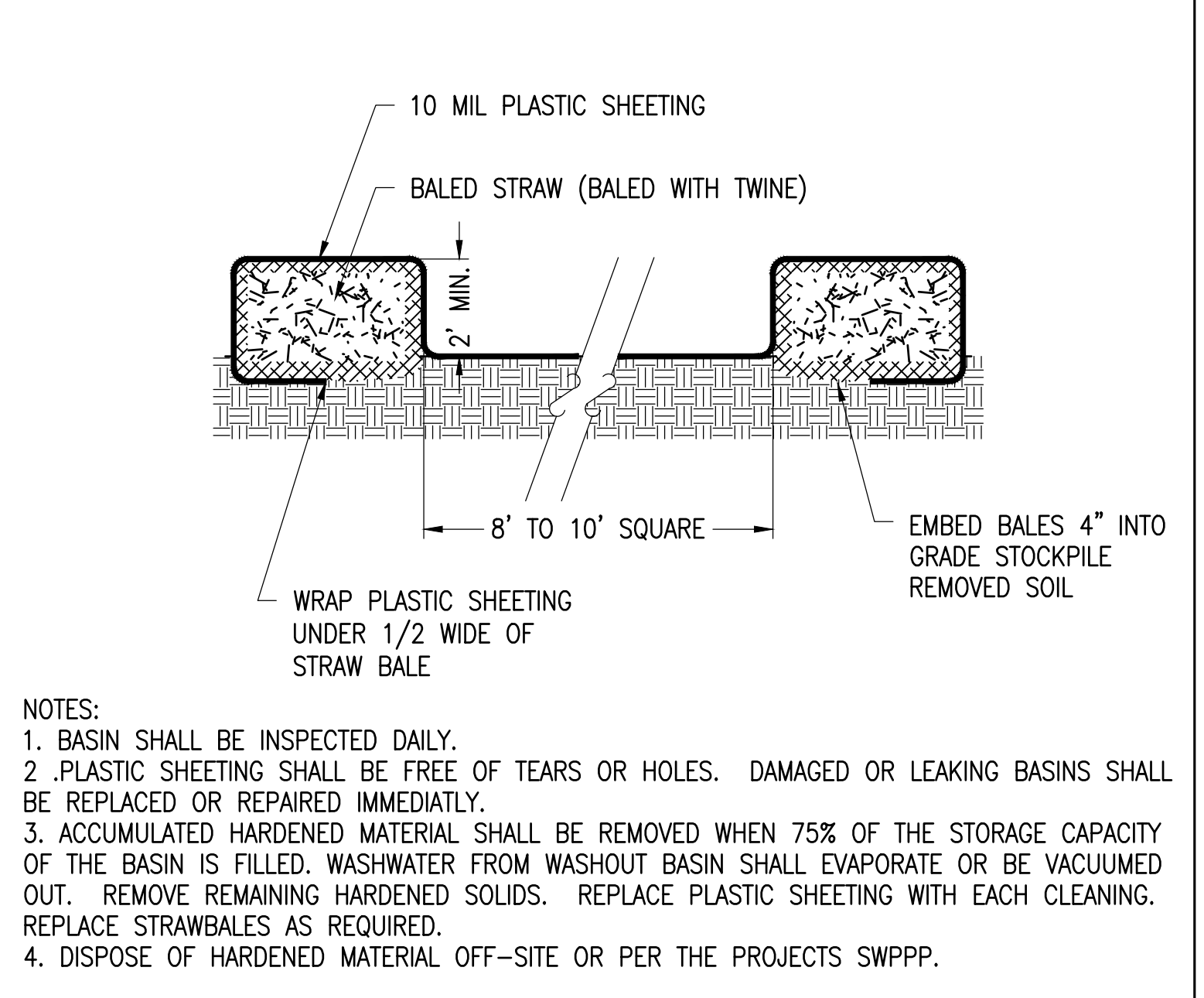
4 **TYPICAL TRENCH** SCALE: NTS
XD_ELEC_TYPICAL_TRENCH 2016-10-17



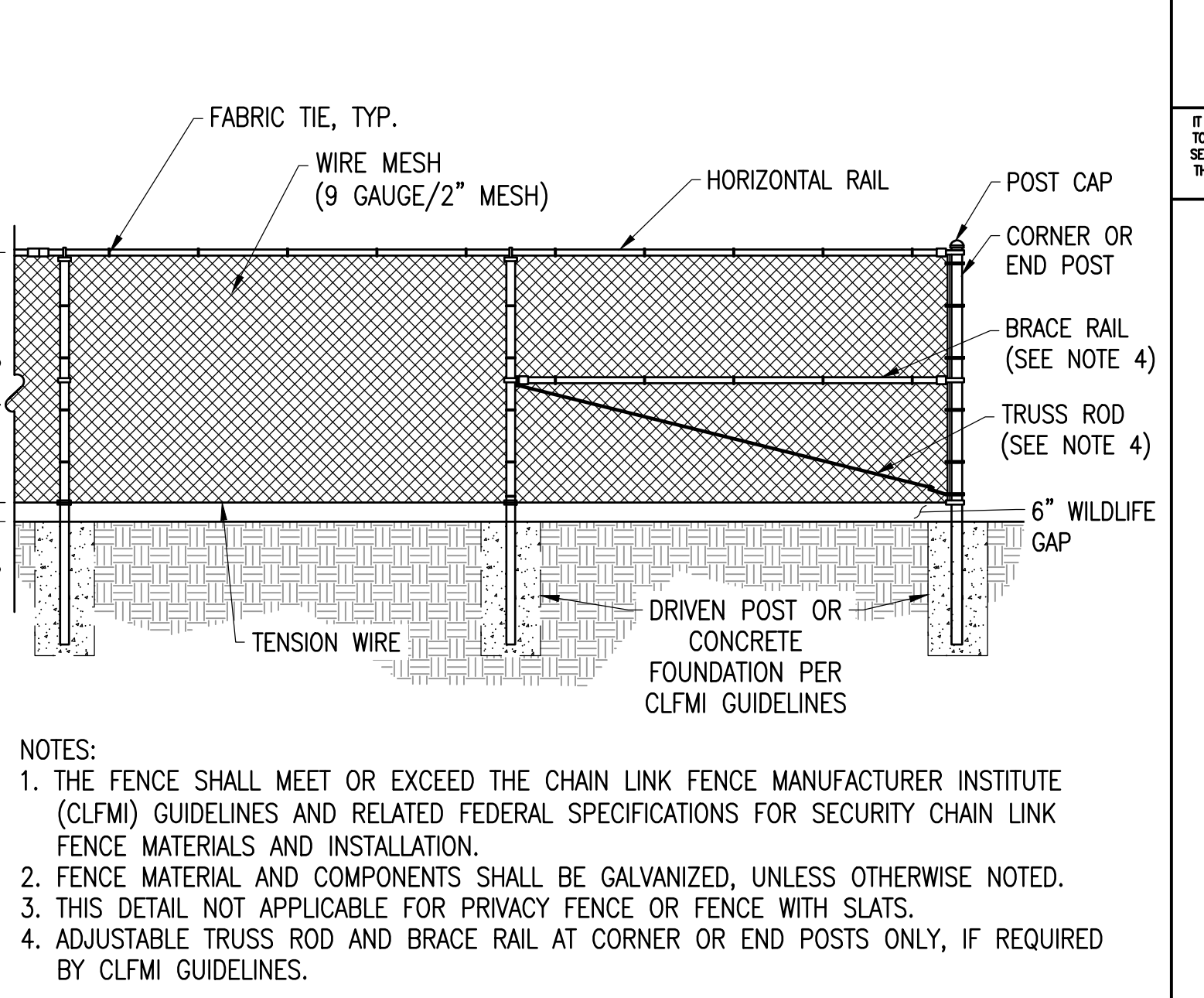
1 **GRAVEL ACCESS ROAD - UTILITY ACCESS DRIVEWAY** SCALE: NTS
XD_CML_GRAVEL_ROAD_L 04-30-2019



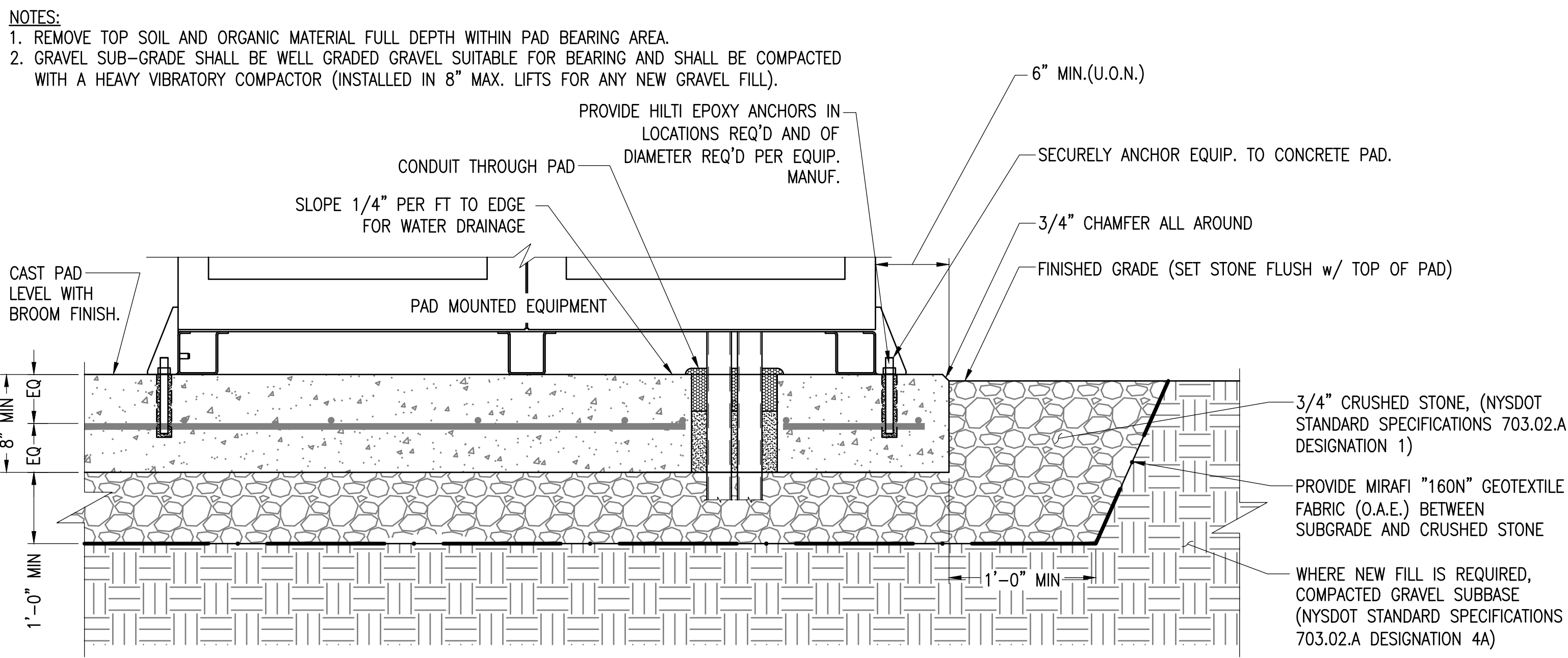
8 **VEHICLE GATE WITH WILDLIFE GAP** SCALE: NTS
XD_CML_FENCE_VEHICLE_GATE_7 07-02-2020



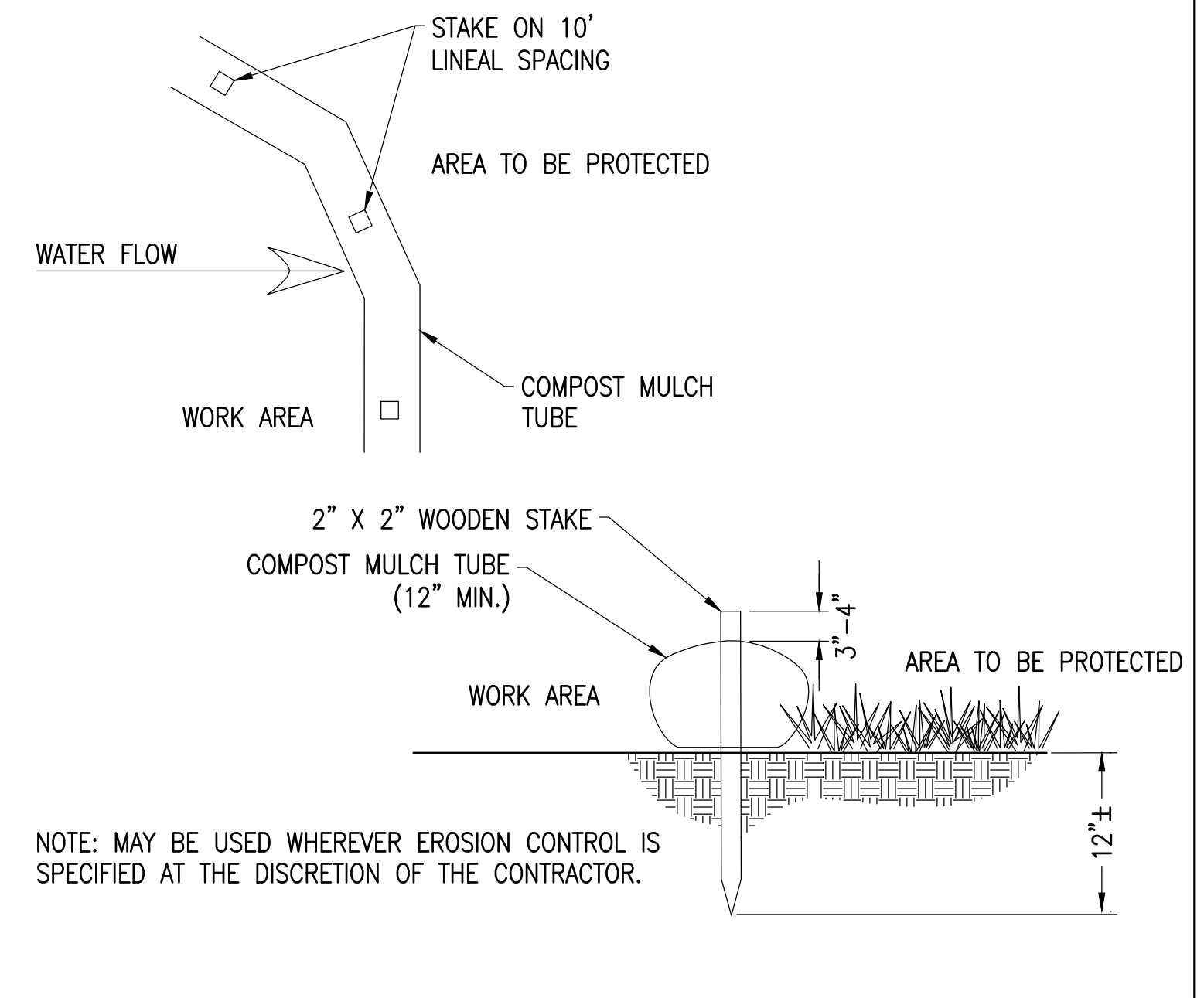
5 **CONCRETE WASHOUT BASINS** SCALE: NTS
XD_CML_CONCRETE_WASHOUT_BASINS 07-26-2017



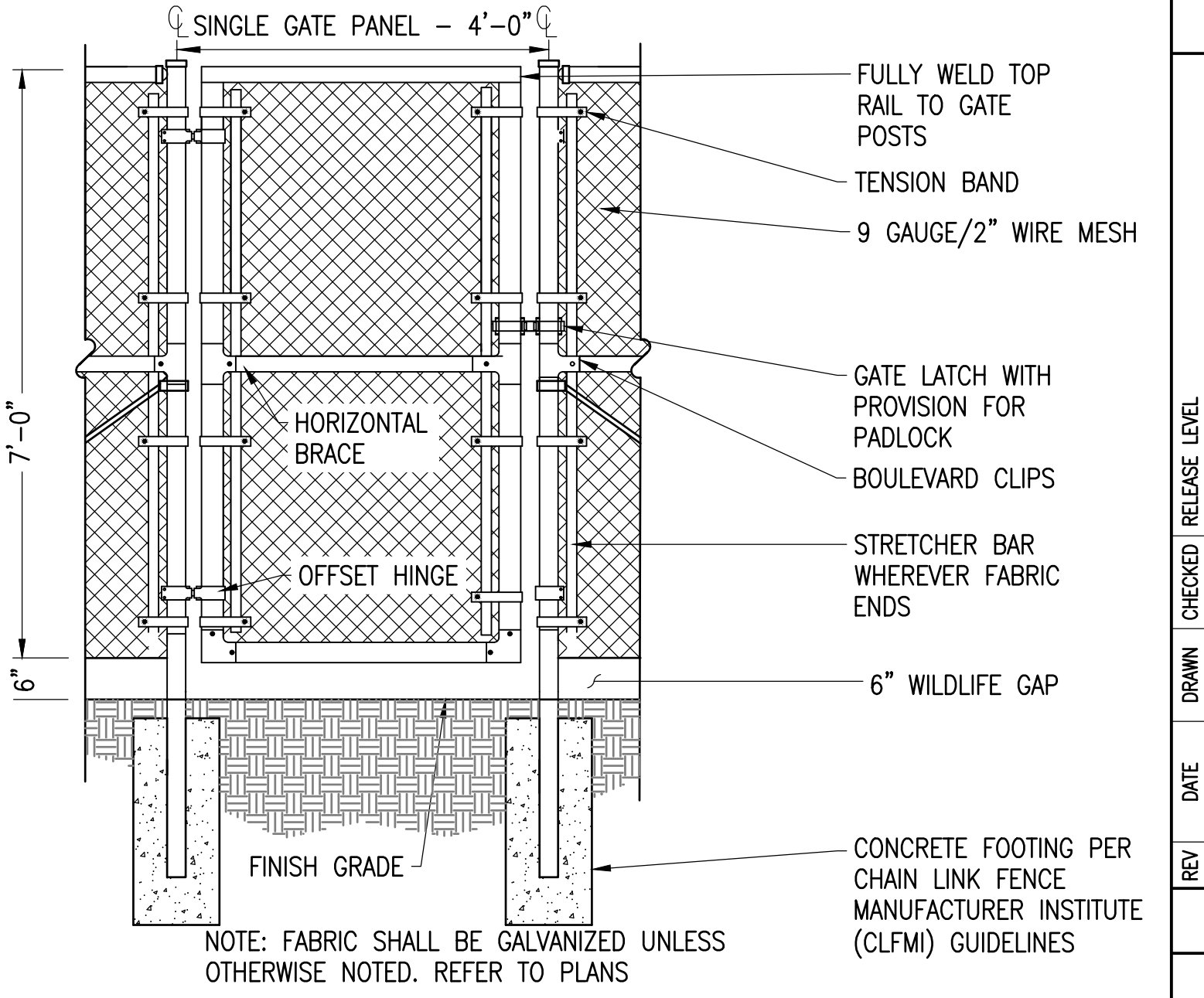
2 **CHAIN LINK FENCE WITH WILDLIFE GAP** SCALE: NTS
XD_CML_FENCE_7_CHAIN_LINK_WILDLIFE_GAP 07-02-2020



9 **TYPICAL EQUIPMENT PAD - SECTION** Scale: NTS
XD_STRUC_EQUIPMENT_PAD-SECTION_LAY 2016-07-20



6 **SILT SOCK** SCALE: NTS
XD_CML_FILTER_SOCK 03-29-2016



3 **4' ACCESS GATE WITH WILDLIFE GAP** SCALE: NTS
XD_CML_SITE_CONSTRUCTION_4' WALK THROUGH GATE 07-25-2017

THIS DOCUMENT IS PROVIDED BY BORREGO SOLAR SYSTEMS, INC. TO FACILITATE THE SALE AND INSTALLATION OF A SOLAR POWER SYSTEM FROM BORREGO SOLAR SYSTEMS, INC. REPRODUCTION, RELEASE, OR UTILIZATION FOR ANY OTHER PURPOSE, WITHOUT PRIOR WRITTEN CONSENT, IS STRICTLY PROHIBITED.

BORREGO SOLAR
55 TECHNOLOGY DRIVE, SUITE 102
LOWELL, MA 01851
PHONE: (988) 898-6273
FAX: (988) 843-6778
WWW.BORREGOSOLAR.COM

NOT FOR CONSTRUCTION

IT IS A VIOLATION OF LAW FOR ANY PERSON TO ALTER ANY DOCUMENT WHICH BEARS THE SEAL OF A PROFESSIONAL ENGINEER, UNLESS THEY ARE ACTING UNDER THE DIRECTION OF A LICENSED PROFESSIONAL ENGINEER.

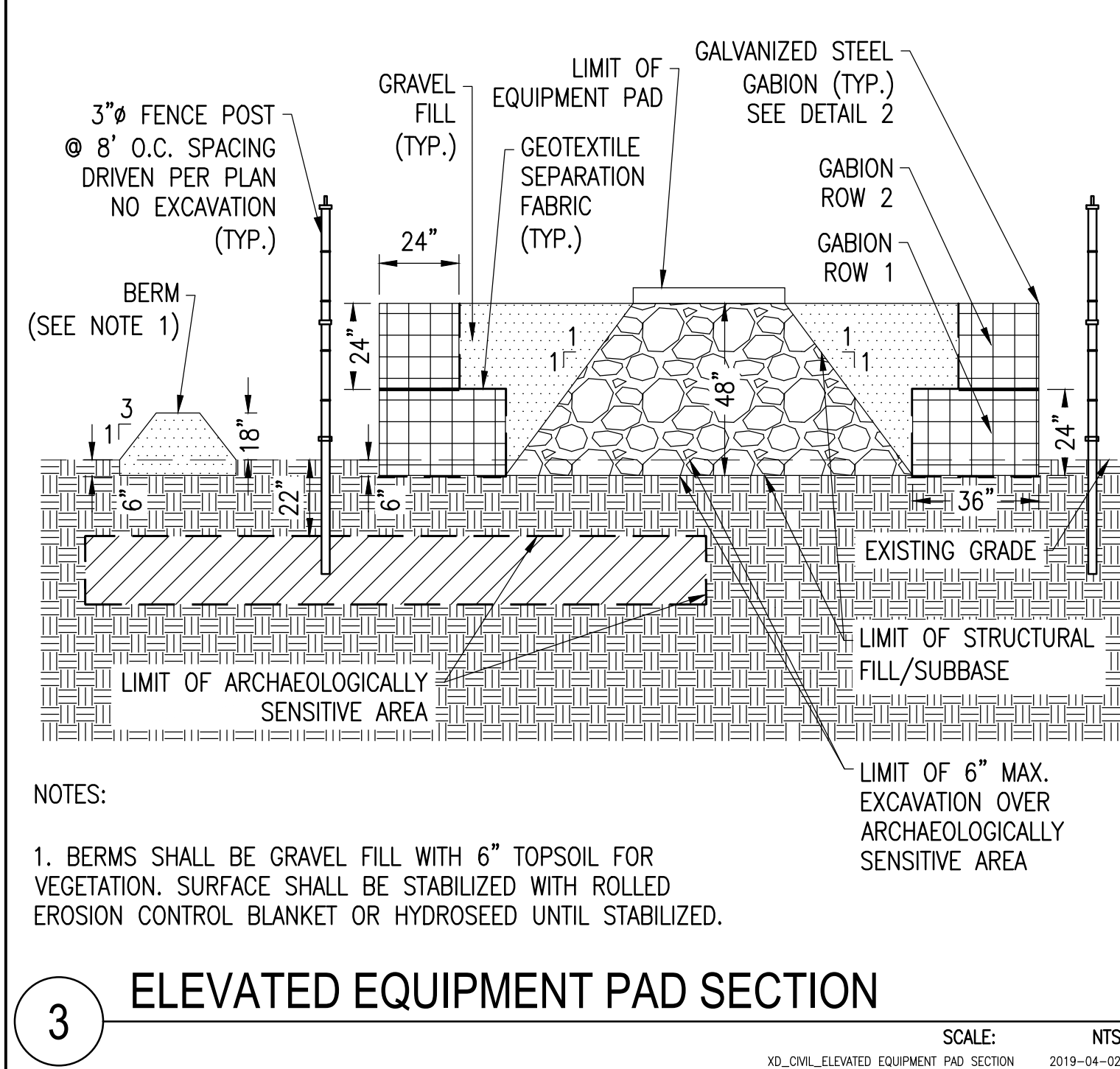
PLAN SET
381 N HIGHLAND AVE
OSSINING, NY 10562

PROJECT NUMBER:
908-1684

REV	DATE	DRAWN	CHECKED	RELEASE LEVEL	PER TOWN	COMMENTS
	12/15/20	DC	CG		CL	THREE LINE DIAGRAM
	05/19/21	CL	TL		CL	STORMWATER SHEETS
	06/21/21	DC	TL		AW	BID SET
	07/08/21	TL	AW		TL	BID SET
	08/16/21	TL	CG		CG	STORMWATER UPDATES
	10/25/21	DC	CG		CG	STORMWATER & GRADING UPDATES
	12/02/21	DC				

SCALES STATED ON DRAWINGS ARE VALID ONLY WHEN PLOTTED ASH 9 24" X 36"

C-5.0
CIVIL DETAILS



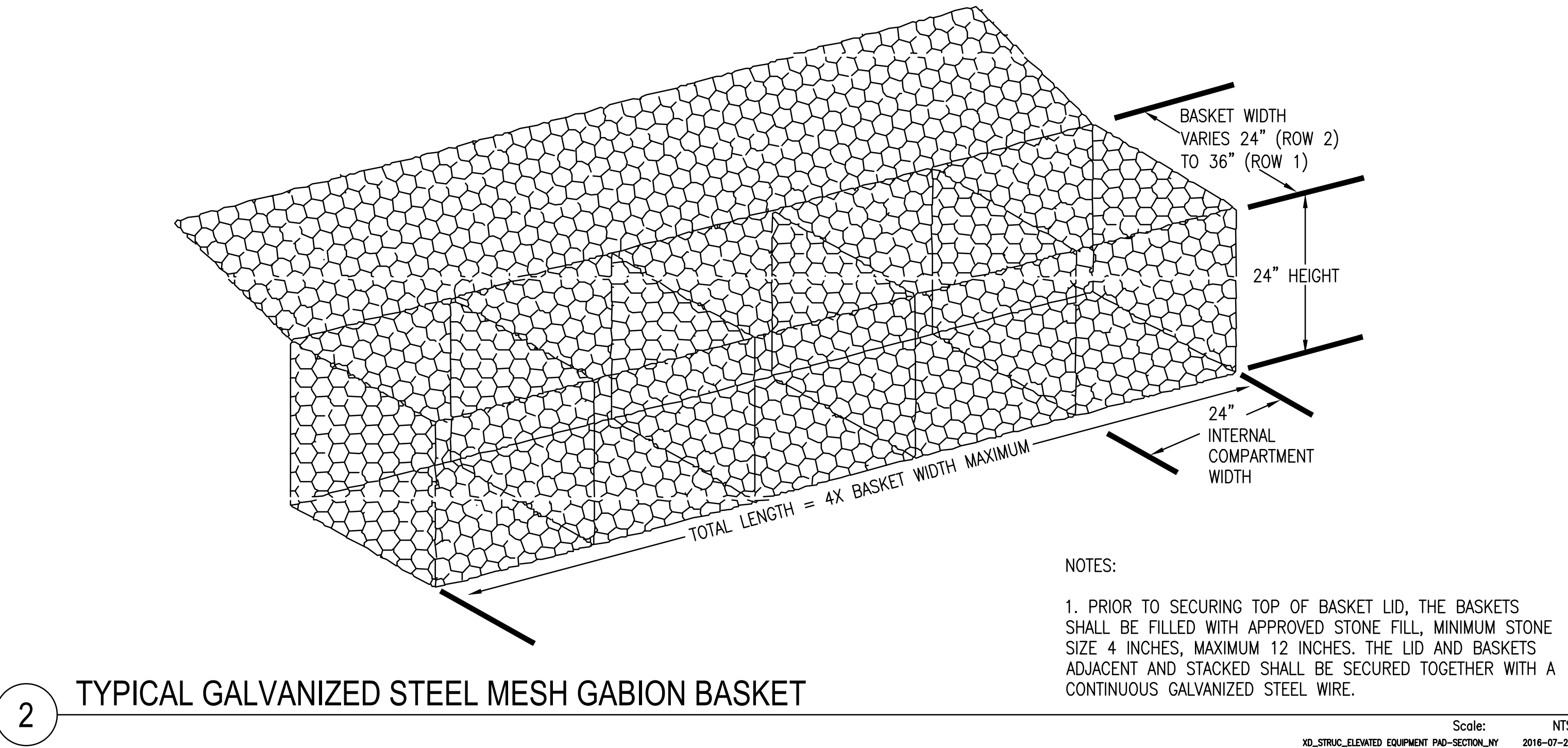
NOTES:

1. BERMS SHALL BE GRAVEL FILL WITH 6" TOPSOIL FOR VEGETATION. SURFACE SHALL BE STABILIZED WITH ROLLED EROSION CONTROL BLANKET OR HYDROSEED UNTIL STABILIZED.

3 ELEVATED EQUIPMENT PAD SECTION

SCALE: NTS

XD_OVL_ELEVATED EQUIPMENT PAD SECTION 2019-04-02



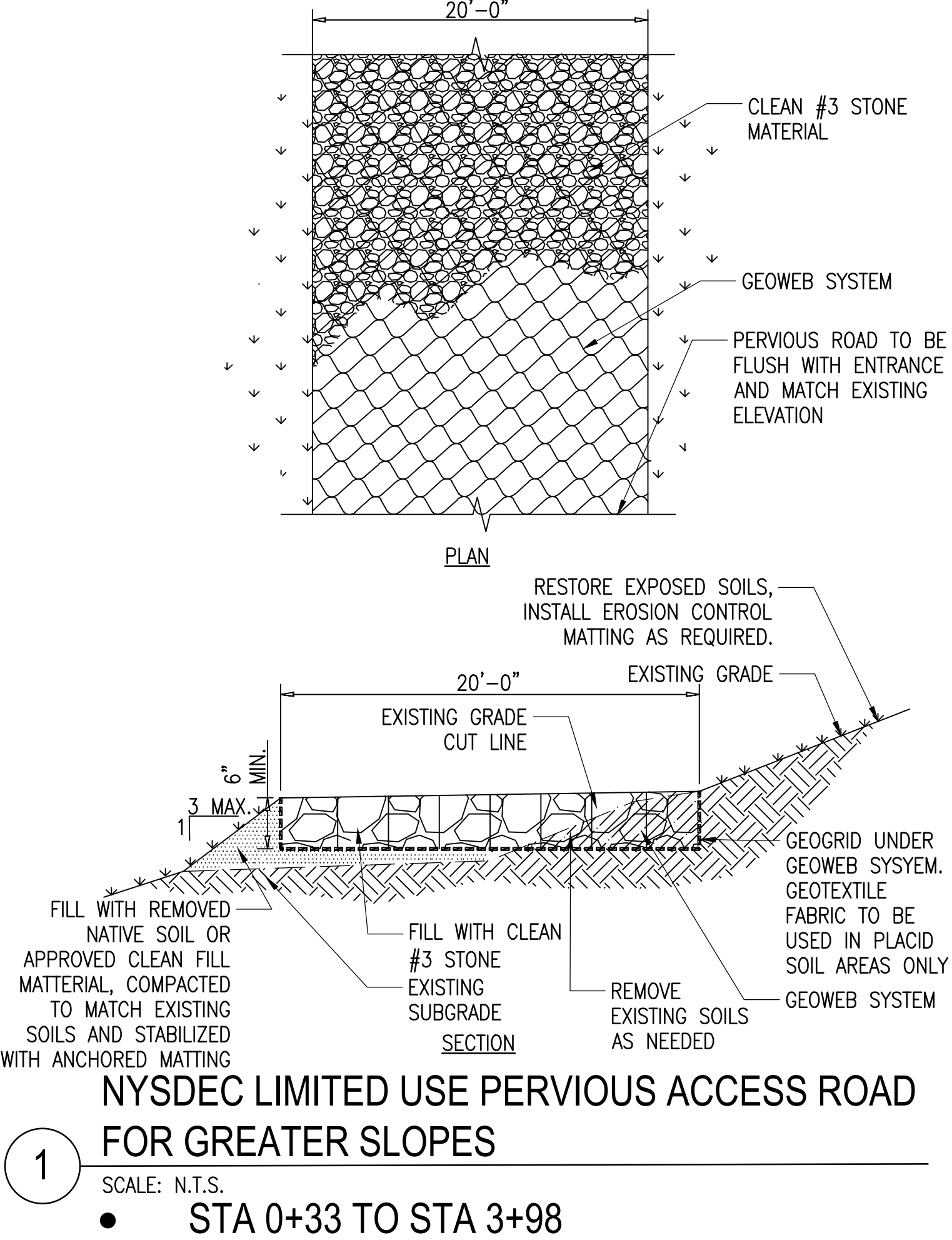
NOTES:

1. PRIOR TO SECURING TOP OF BASKET LID, THE BASKETS SHALL BE FILLED WITH APPROVED STONE FILL, MINIMUM STONE SIZE 4 INCHES, MAXIMUM 12 INCHES. THE LID AND BASKETS ADJACENT AND STACKED SHALL BE SECURED TOGETHER WITH A CONTINUOUS GALVANIZED STEEL WIRE.

2 TYPICAL GALVANIZED STEEL MESH GABION BASKET

Scale: NTS

XD_STRUC_ELEVATED EQUIPMENT PAD-SECTION.NY 2016-07-20



1 NYSDEC LIMITED USE PERVIOUS ACCESS ROAD FOR GREATER SLOPES

SCALE: N.T.S.

- STA 0+33 TO STA 3+98

THIS DOCUMENT IS PROVIDED BY BORREGO SOLAR SYSTEMS, INC. TO FACILITATE THE SALE AND INSTALLATION OF A SOLAR POWER SYSTEM FROM BORREGO SOLAR SYSTEMS, INC. REPRODUCTION, RELEASE, OR UTILIZATION FOR ANY OTHER PURPOSE, WITHOUT PRIOR WRITTEN CONSENT, IS STRICTLY PROHIBITED.

BORREGO SOLAR

55 TECHNOLOGY DRIVE, SUITE 102
LOWELL, MA 01851
PHONE: (978) 858-6273
FAX: (978) 843-6778
WWW.BORREGOSOLAR.COM

NOT FOR CONSTRUCTION

IT IS A VIOLATION OF LAW FOR ANY PERSON TO ALTER ANY DOCUMENT WHICH BEARS THE SEAL OF A PROFESSIONAL ENGINEER, UNLESS THEY ARE ACTING UNDER THE DIRECTION OF A LICENSED PROFESSIONAL ENGINEER.

PLAN SET
381 N HIGHLAND AVE
OSSINING, NY 10562

PROJECT NUMBER:
908-1684

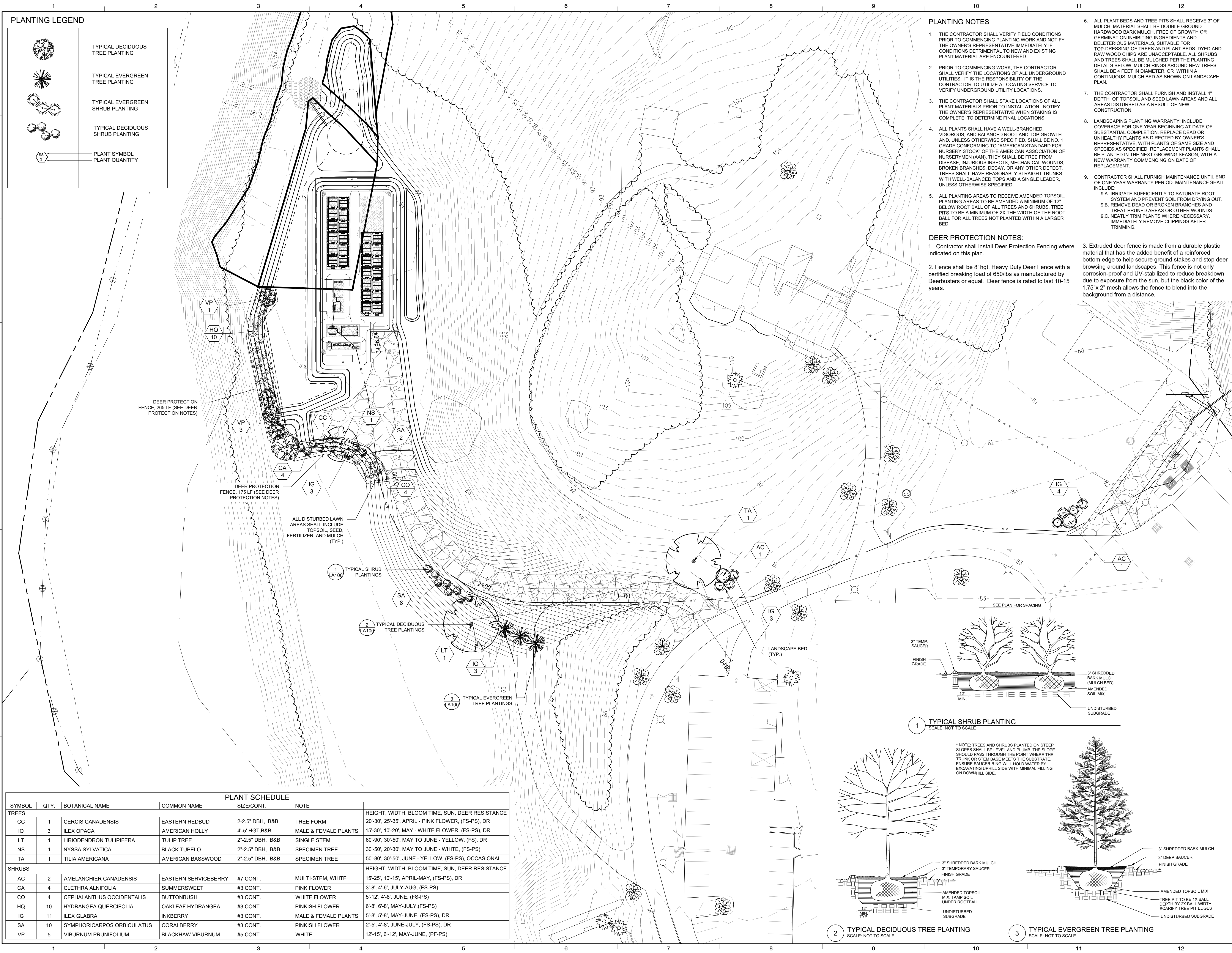
REV	DATE	DRAWN	CHECKED	RELEASE LEVEL
	12/15/20	DC	GG	PER TOWN COMMENTS
	05/19/21	CL	TL	THREE LINE DIAGRAM
	06/21/21	DC	TL	STORMWATER SHEETS
	07/08/21	TL	AW	BID SET
	08/16/21	TL	AW	BID SET
	10/25/21	DC	GG	STORMWATER UPDATES
	12/02/21	DC	GG	STORMWATER & GRADING UPDATES

SCALES STATED ON DRAWINGS ARE VALID ONLY WHEN PLOTTED ARCH D 24" X 36"

C-5.1

CIVIL DETAILS

File Name: S:\2020\2020-065 10 Borrego - 381 Highland Ave Ossining Visual Assessment Services\C4.4 Production\C4.3-CDU\ABase 20210707.dwg
User: — Plot Date and Time: 12/23/2021 10:57 AM



BORREGO SOLAR

Consultant: **SARATOGA ASSOCIATES**

Landscape Architects, Architects, Engineers, and Planners, P.C.
New York City • Saratoga Springs • Syracuse

Four Congress Park Centre, 21 Congress St, Saratoga Springs, NY 12866
T 518.587.2500 F 518.587.2504 marketing@saratogassociates.com

BORREGO SOLAR

55 TECHNOLOGY DRIVE, SUITE 102 LOWELL, MA 01851 PHONE: (888) 898-6273 FAX: (888) 843-6778
WWW.BORREGOSOLAR.COM

Dig Safely New York
Call 811
before you dig

SITE USE PERMIT
381 N HIGHLAND AVE
OSSINING, NY 10562

LANDSCAPE MITIGATION PLAN

NO. DATE DESCRIPTION DRAWN CHK

v 2	07.14.20	Planting Plan Update	LMM	
v 3	12.23.21	Add plants, deer notes, update base plan	RJM	MWA

SARATOGA ASSOCIATES PROJECT # 2020-065

UNAUTHORIZED ALTERATION OR ADDITION TO THIS DOCUMENT IS A VIOLATION OF SECTION 7209 OF THE NEW YORK STATE EDUCATION LAW. © 2020 ALL RIGHTS RESERVED SARATOGA ASSOCIATES

DATE: 12/29/2020
DRAWN BY: GMT
CHECKED BY: GMT
PHASE: TOWN REVIEW
DWG SCALE: 1" = 30'-0"

LA100