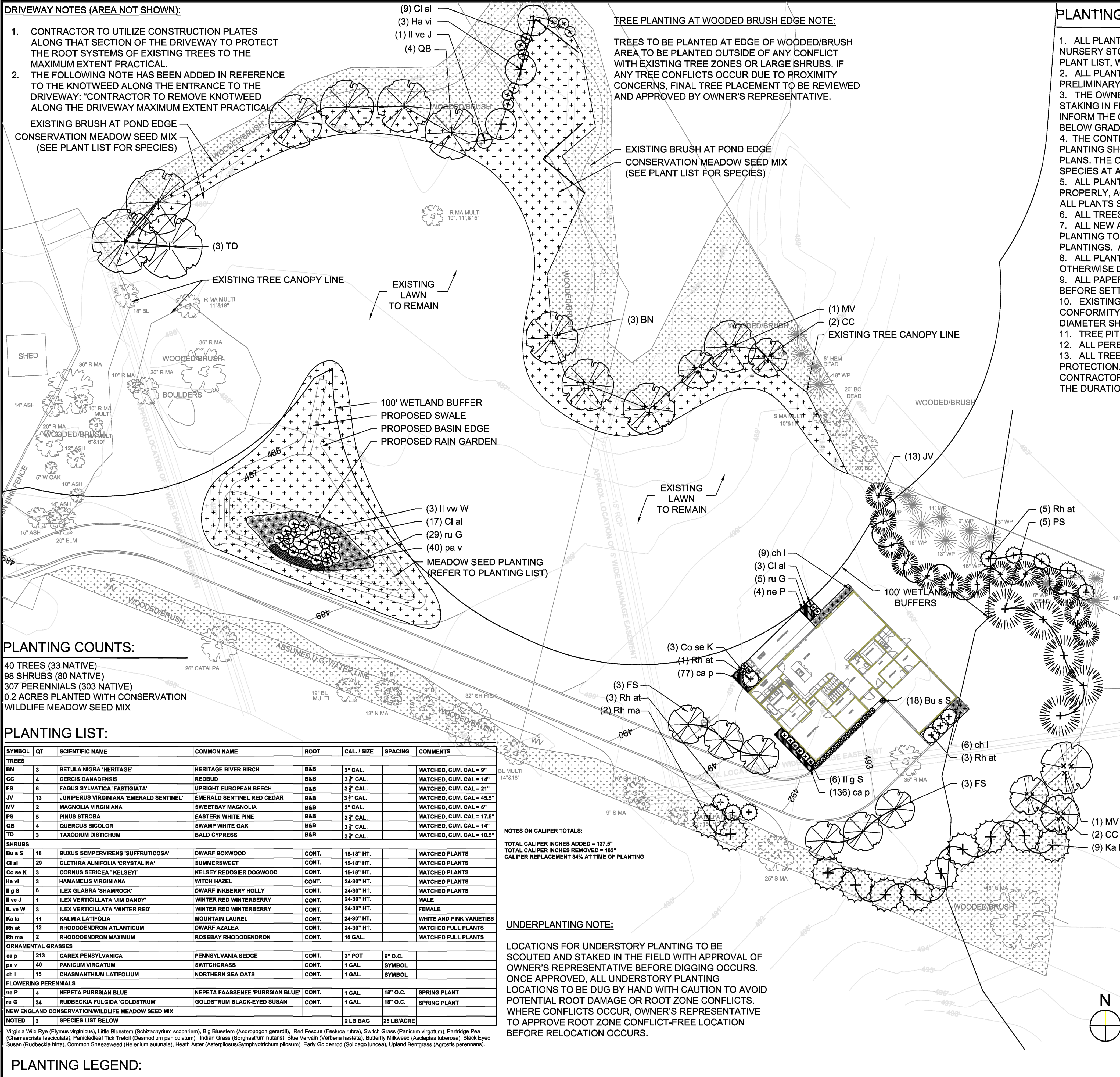


DRIVEWAY NOTES (AREA NOT SHOWN):

- CONTRACTOR TO UTILIZE CONSTRUCTION PLATES ALONG THAT SECTION OF THE DRIVEWAY TO PROTECT THE ROOT SYSTEMS OF EXISTING TREES TO THE MAXIMUM EXTENT PRACTICAL.
- THE FOLLOWING NOTE HAS BEEN ADDED IN REFERENCE TO THE KNOTWEED ALONG THE ENTRANCE TO THE DRIVEWAY: "CONTRACTOR TO REMOVE KNOTWEED ALONG THE DRIVEWAY MAXIMUM EXTENT PRACTICAL"

EXISTING BRUSH AT POND EDGE
CONSERVATION MEADOW SEED MIX
(SEE PLANT LIST FOR SPECIES)



PLANTING COUNTS:

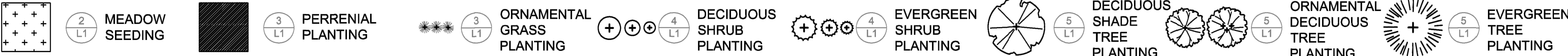
40 TREES (33 NATIVE)
98 SHRUBS (80 NATIVE)
307 PERENNIALS (303 NATIVE)
0.2 ACRES PLANTED WITH CONSERVATION
WILDLIFE MEADOW SEED MIX

PLANTING LIST:

SYMBOL	QT	SCIENTIFIC NAME	COMMON NAME	ROOT	CAL. / SIZE	SPACING	COMMENTS
TREES							
BN	3	BETULA NIGRA 'HERITAGE'	HERITAGE RIVER BIRCH	B&B	3" CAL.		MATCHED, CUM. CAL. = 9"
CC	4	CERCIS CANADENSIS	REDBUD	B&B	3" CAL.		MATCHED, CUM. CAL. = 14"
FS	6	FAGUS SYLVATICA 'PASTIGIATA'	UPRIGHT EUROPEAN BEECH	B&B	3" CAL.		MATCHED, CUM. CAL. = 21"
JV	13	JUNIPERUS VIRGINIANA 'EMERALD SENTINEL'	EMERALD SENTINEL RED CEDAR	B&B	3" CAL.		MATCHED, CUM. CAL. = 45.5"
MV	2	MAGNOLIA VIRGINIANA	SWEETBAY MAGNOLIA	B&B	3" CAL.		MATCHED, CUM. CAL. = 6"
PS	5	PINUS STROBA	EASTERN WHITE PINE	B&B	3" CAL.		MATCHED, CUM. CAL. = 17.5"
QB	4	QUERCUS BICOLOR	SWAMP WHITE OAK	B&B	3" CAL.		MATCHED, CUM. CAL. = 14"
TD	3	TAXODIUM DISTICHUM	BALD CYPRESS	B&B	3" CAL.		MATCHED, CUM. CAL. = 10.5"
SHRUBS							
Bu s S	18	BUXUS SEMPERVIRENS 'SUFFRUTICOSA'	DWARF BOXWOOD	CONT.	15-18" HT.		MATCHED PLANTS
Cl al	29	CLETHRA ALNIFOLIA 'CRYSTALLINA'	SUMMERSWEET	CONT.	15-18" HT.		MATCHED PLANTS
Co se K	3	CORNUS SERICEA 'KELSEY'	KELSEY REDOSIER DOGWOOD	CONT.	15-18" HT.		MATCHED PLANTS
Ha vl	3	HAMAMELIS VIRGINIANA	WITCH HAZEL	CONT.	24-30" HT.		MATCHED PLANTS
Il g S	6	ILEX GLABRA 'SHAMROCK'	DWARF INKBERRY HOLLY	CONT.	24-30" HT.		MATCHED PLANTS
Il ve J	1	ILEX VERTICILLATA 'JIM DANDY'	WINTER RED WINTERBERRY	CONT.	24-30" HT.		MALE
Il ve W	3	ILEX VERTICILLATA 'WINTER RED'	WINTER RED WINTERBERRY	CONT.	24-30" HT.		FEMALE
Ka la	11	KALMIA LATIFOLIA	MOUNTAIN LAUREL	CONT.	24-30" HT.		WHITE AND PINK VARIETIES
Rh at	12	RHOODENDRON ATLANTICUM	DWARF AZALEA	CONT.	24-30" HT.		MATCHED FULL PLANTS
Rh ma	2	RHOODENDRON MAXIMUM	ROSEBAY RHOODENDRON	CONT.	10 GAL.		MATCHED FULL PLANTS
ORNAMENTAL GRASSES							
ca p	213	CAREX PENSYLVANICA	PENNSYLVANIA SEDGE	CONT.	3" POT	6" O.C.	
pa v	40	PANICUM VIRGATUM	SWITCHGRASS	CONT.	1 GAL.	SYMBOL	
ch i	15	CHASMANTHIUM LATIFOLIUM	NORTHERN SEA OATS	CONT.	1 GAL.	SYMBOL	
FLOWERING PERENNIALS							
he P	4	HEPETA PURRSIAN BLUE	HEPETA FAASSENEE 'PURRSIAN BLUE'	CONT.	1 GAL.	18" O.C.	SPRING PLANT
ru G	34	RUDBECKIA FULGIDA 'GOLDSTRUM'	GOLDSTRUM BLACK-EYED SUSAN	CONT.	1 GAL.	18" O.C.	SPRING PLANT
NEW ENGLAND CONSERVATION/WILDLIFE MEADOW SEED MIX							
NOTED	3	SPECIES LIST BELOW			2 LB BAG	25 LB/ACRE	

Virginia Wild Rye (Elymus virginicus), Little Bluestem (Schizachyrium scoparium), Big Bluestem (Andropogon gerardii), Red Fescue (Festuca rubra), Switch Grass (Panicum virgatum), Partridge Pea (Chamaecrista fasciculata), Perennial Tick Treetop (Desmodium paniculatum), Indian Grass (Sorghastrum nutans), Blue Vervain (Verbena hastata), Butterfly Milkweed (Asclepias tuberosa), Black Eyed Susan (Rudbeckia hirta), Common Sneezeweed (Helenium autumnale), Heath Aster (Aster pilosus/Symphoricarpos pilosus), Early Goldenrod (Solidago juncea), Upland Gentian (Agrostis perennans).

PLANTING LEGEND:



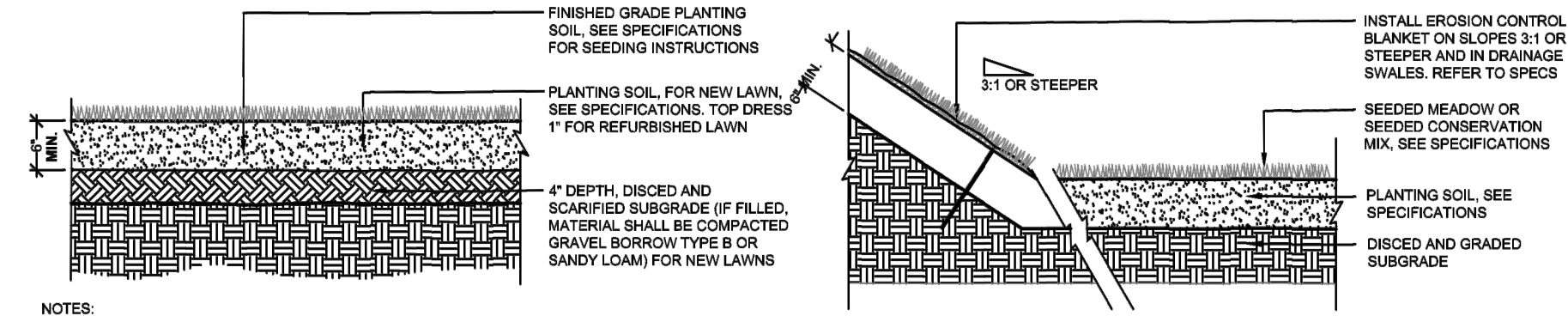
NOTE:

- THIS IS NOT A SURVEY. ALL SURVEY INFORMATION SHOWN ON THIS PLAN HAS BEEN TAKEN FROM SURVEY MAP PREPARED BY JOHN GERD HEIDECKER, DATED 01/20/22, LAST REVISED 3/4/22. THE ENGINEER ASSUMES NO RESPONSIBILITY FOR ITS ACCURACY.

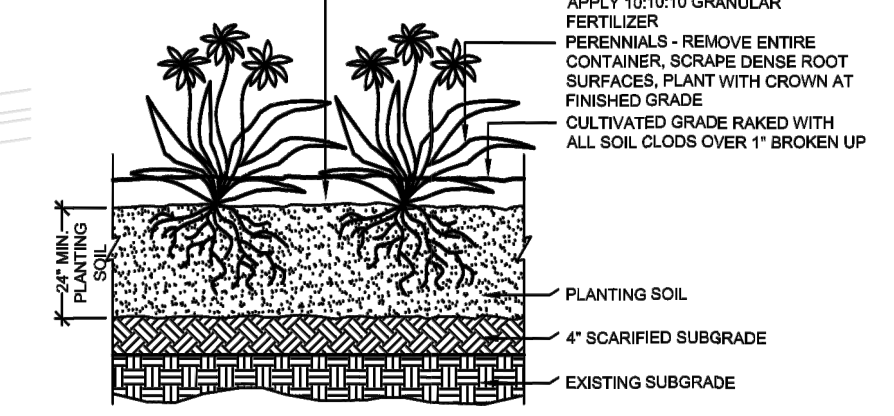
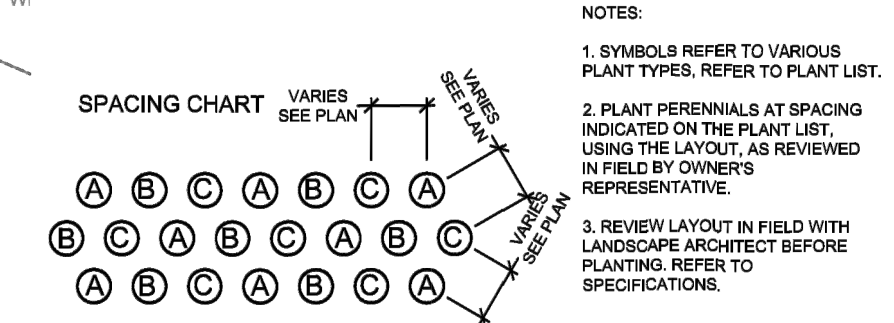
NOTE: UNAUTHORIZED ALTERATIONS OR ADDITIONS TO THIS DRAWING IS A VIOLATION OF SECTION 7209 (2) OF THE NEW YORK STATE EDUCATION LAW.

PLANTING NOTES:

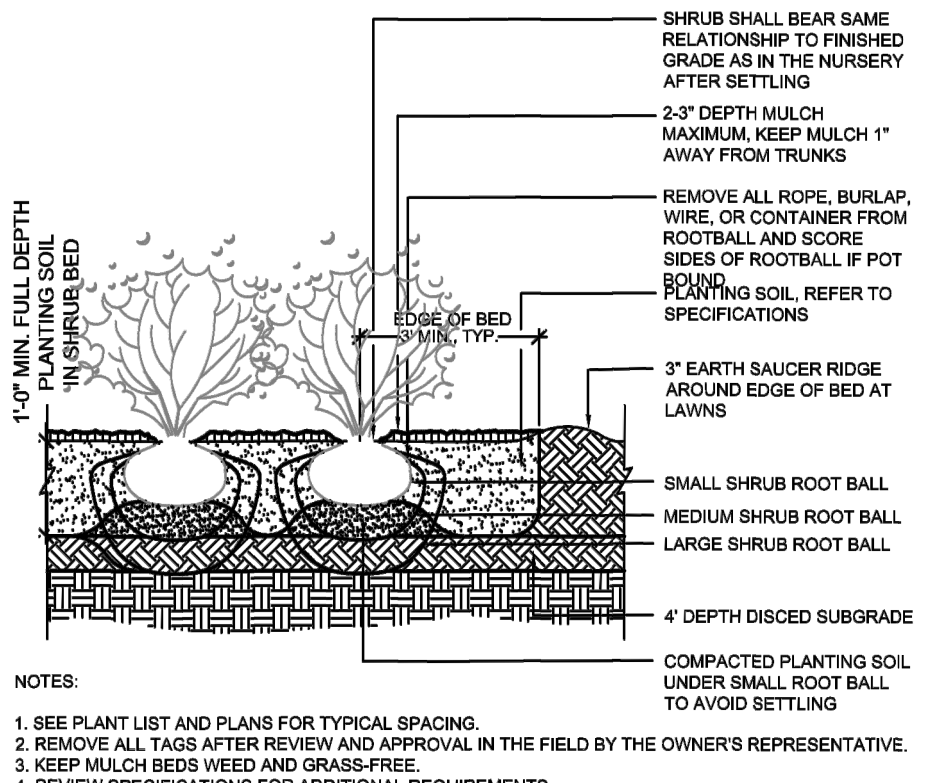
- ALL PLANT MATERIAL SHALL CONFORM TO THE GUIDELINES ESTABLISHED BY THE "AMERICAN STANDARD FOR NURSERY STOCK" PUBLISHED BY AMERICAN ASSOCIATION OF NURSERYMEN, LATEST EDITION, OR AS INDICATED IN THE PLANT LIST, WHICH SHALL GOVERN.
- ALL PLANT MATERIAL SHALL BE FIELD SELECTED IN NURSERIES BY THE OWNER'S REPRESENTATIVE AFTER PRELIMINARY TAGGING BY CONTRACTOR. ALL STOCK SHALL BE NURSERY GROWN.
- THE OWNER'S REPRESENTATIVE SHALL REVIEW PLACEMENT OF PLANTS IN FIELD BEFORE INSTALLATION AFTER STAKING IN FIELD BY CONTRACTOR ACCORDING TO PLANTING PLANS AND SITE DETAILS. THE CONTRACTOR SHALL INFORM THE OWNER'S REPRESENTATIVE IMMEDIATELY OF ANY CONFLICTS BETWEEN PROPOSED PLANT LOCATIONS AND BELOW GRADE UTILITIES, STRUCTURES, DRAINAGE PROBLEMS.
- THE CONTRACTOR SHALL SUPPLY ALL PLANT MATERIALS IN SIZES AND QUANTITIES SUFFICIENT TO COMPLETE THE PLANTING SHOWN ON THE DRAWINGS. THE CONTRACTOR SHALL PLANT TREES AT THE SPACING INDICATED ON THE PLANS. THE OWNER'S REPRESENTATIVE HAS THE RIGHT TO REJECT INJURED, DISEASED, DESICCATED OR INCORRECT SPECIES AT ANY TIME.
- ALL PLANTS THAT ARE DELIVERED TO THE SITE AND NOT PLANTED IMMEDIATELY SHALL BE STORED AND WATERED PROPERLY, ACCORDING TO THE SPECIFICATIONS, IN SECURE LOCATIONS REVIEWED BY THE OWNER'S REPRESENTATIVE. ALL PLANTS SHALL HAVE THREE YEAR GUARANTEE.
- ALL TREES SHALL BE STAKED OR ANCHORED SECURELY AND ACCORDING TO THE SITE DETAILS.
- ALL NEW AND EXISTING PLANT MATERIAL WITHIN THE LANDSCAPE LIMIT OF WORK LINE SHALL BE PRUNED AFTER PLANTING TO REMOVE ALL DEAD OR DAMAGED BRANCHES. TREE WOUND DRESSING SHALL NOT BE USED ON ANY PLANTINGS. ALL NEW PLANTINGS SHALL BE WATERED FROM DELIVERY UNTIL THE END OF THE GUARANTEE PERIOD.
- ALL PLANTS SHALL BEAR THE SAME RELATION TO FINISHED GRADE AS TO ORIGINAL GRADE BEFORE DIGGING, UNLESS OTHERWISE DETAILED, AND SHALL HAVE A MULCHED SAUCER ACCORDING TO DETAILS.
- ALL PAPER, PLASTIC CONTAINERS, BURLAP, WIRE BASKETS, AND IRON FASTENERS SHALL BE REMOVED FROM PLANTS BEFORE SETTING IN PLANT PIT.
- EXISTING TOPSOIL SHALL BE UTILIZED FOR LOAM OR PLANTING SOIL MIXTURES ONLY IF TESTING INDICATES TOTAL CONFORMITY TO SPECIFICATIONS FOR LOAM BORROW. ALL GRASS, SOD, ROOTS, SHELLS AND STONES OVER HALF-INCH DIAMETER SHALL BE REMOVED AND LEGALLY DISPOSED OF.
- TREE PIT LOCATIONS SHALL BE TESTED FOR DRAINAGE FOLLOWING METHODS AS REQUIRED BY SPECIFICATIONS.
- ALL PERENNIALS TO BE LAID OUT IN FIELD WITH APPROVAL OF OWNER'S REPRESENTATIVE BEFORE PLANTING.
- ALL TREE PLANTINGS WITH EXPOSED BARK TO BE COVERED WITH 48" MINIMUM HEIGHT MESH TREE BARK PROTECTION. CONTRACTOR TO APPLY EPA-APPROVED DEER BROWSE RESISTANT SPRAY TO NEW PLANTINGS. CONTRACTOR TO MONITOR PLANTS AND REAPPLY PRODUCT ACCORDING TO MANUFACTURER'S RECOMMENDATIONS FOR THE DURATION OF THE PLANT GUARANTEE PERIOD.



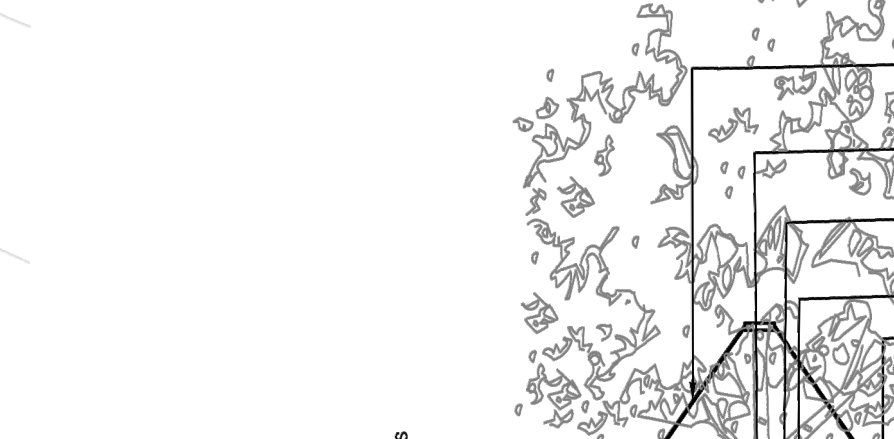
1 LAWN RESTORATION PLANTING
NOT TO SCALE



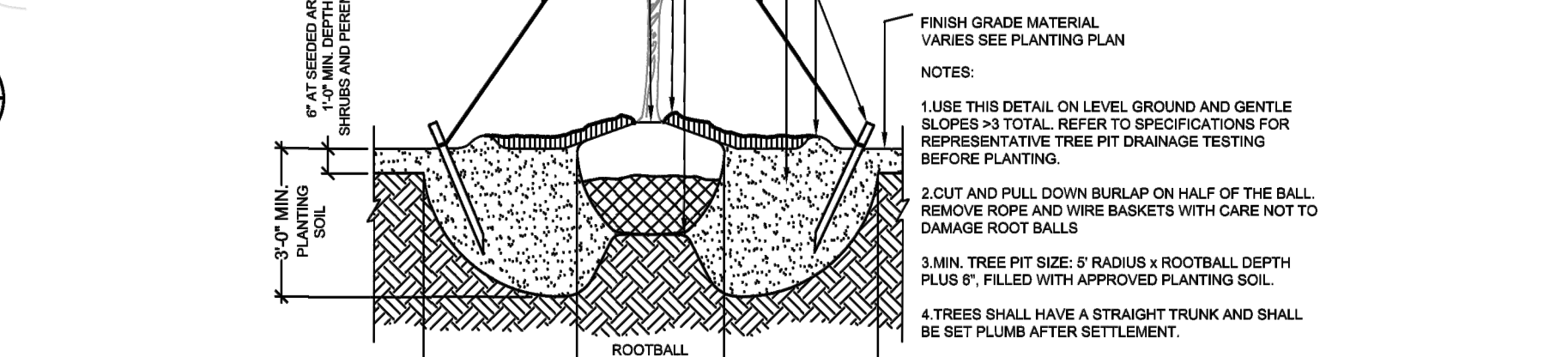
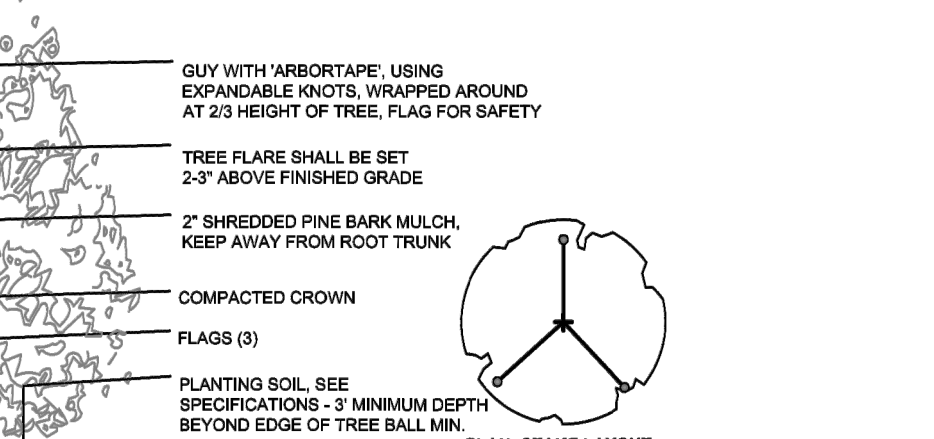
2 MEADOW SEEDING
NOT TO SCALE



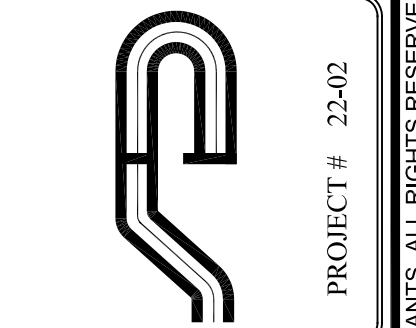
3 PERENNIAL PLANTING
NOT TO SCALE



4 SHRUB PLANTING
NOT TO SCALE



5 TREE PLANTING
NOT TO SCALE



Site Design Consultants
Civil Engineers • Land Planners
251-F Underhill Avenue, Yorktown Heights, NY 10598
(914) 962-4488 • Fax: (914) 962-7386
www.sitedesignconsultants.com



Revisions:	No.	Date	Comments
	1	3/24/22	Town Comments
	2	4/11/22	Town Comments
	3	5/20/22	Town Comments

SCALE:	1" = 20'
DRAWN BY:	TK
DATE:	2/8/22

LANDSCAPE PLAN

SITE PLAN PREPARED FOR
WELCOME HOMES
68 SOMERSTOWN ROAD
Westchester County, New York
Town of Ossining