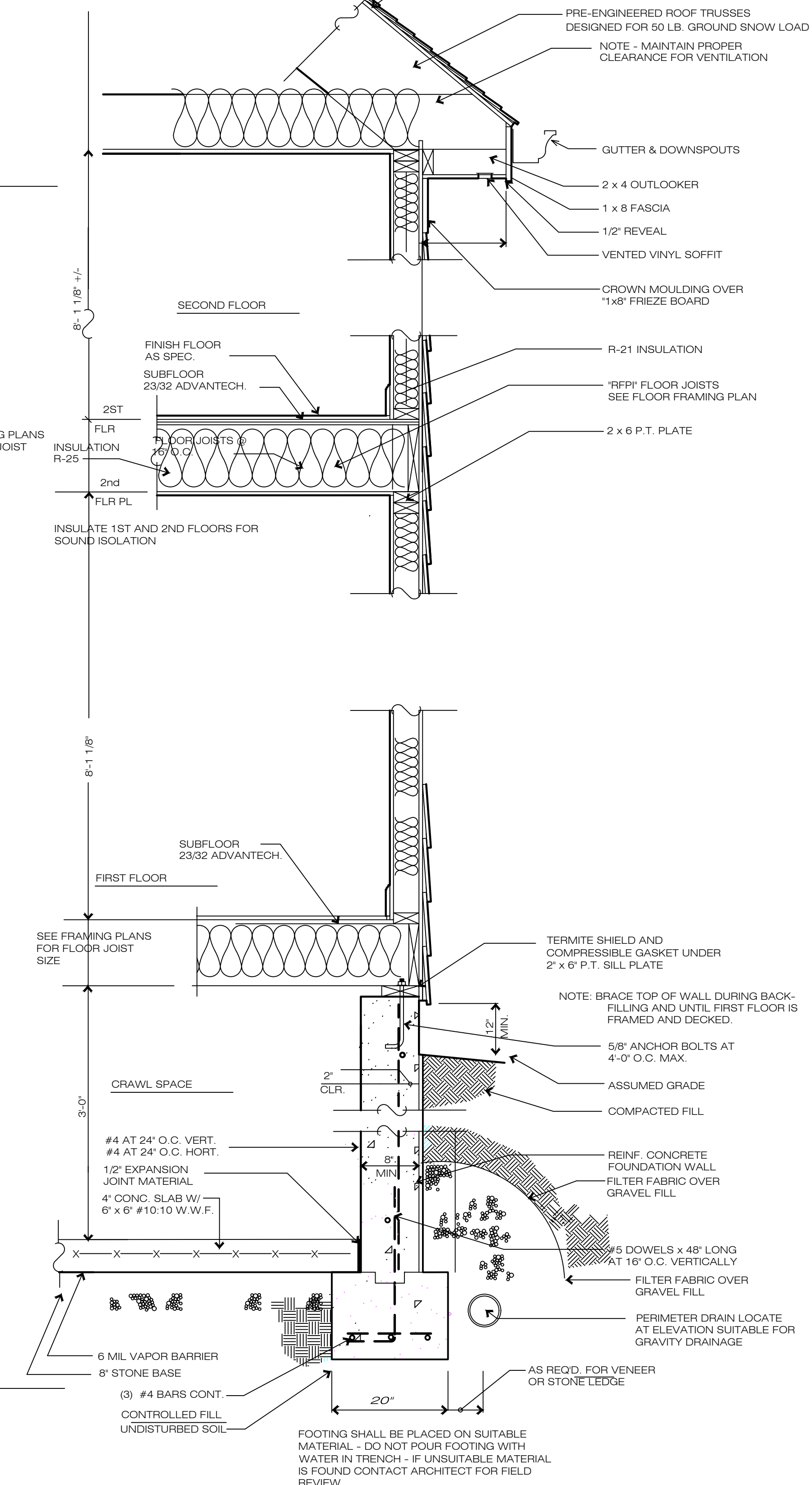
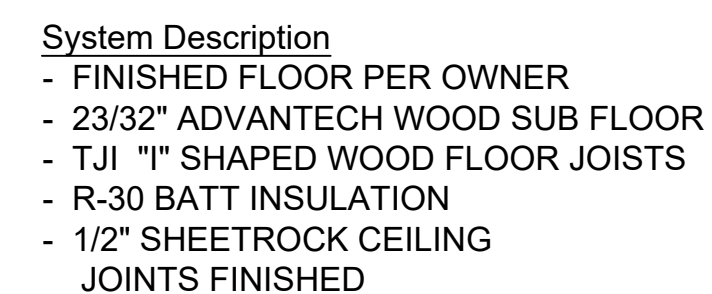
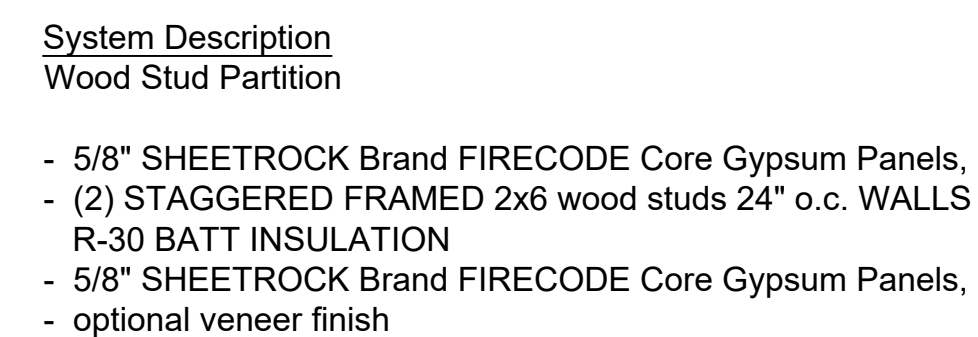
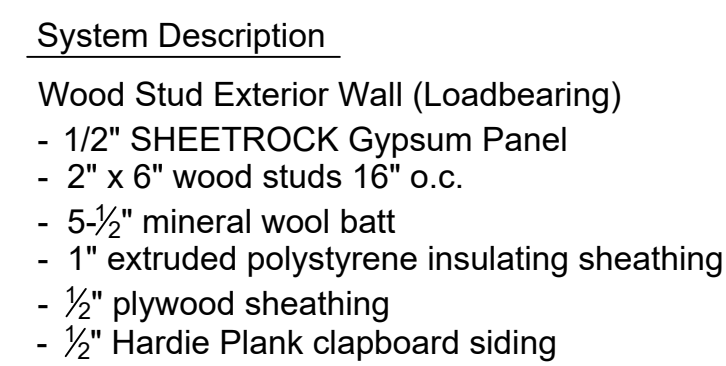
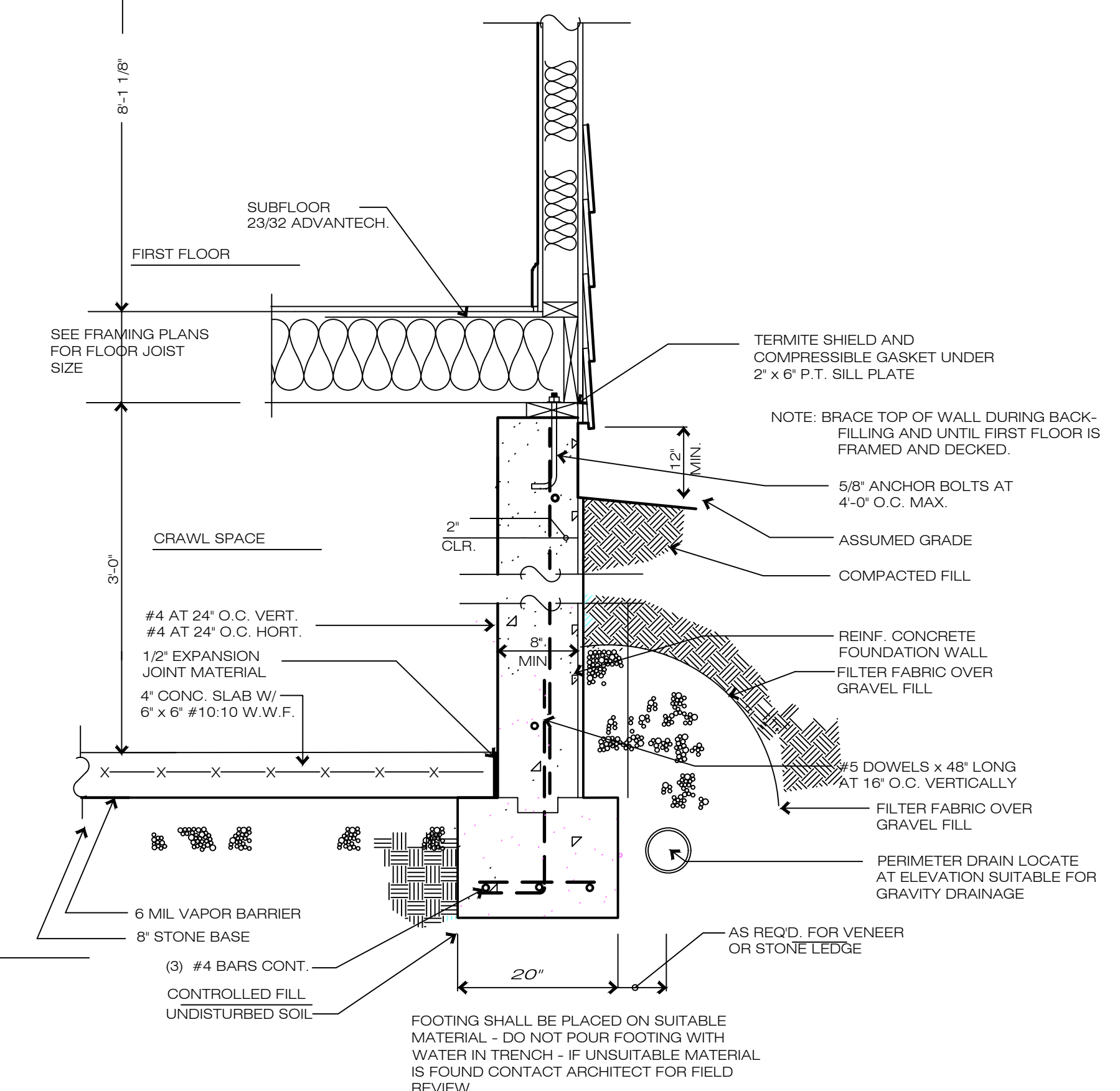
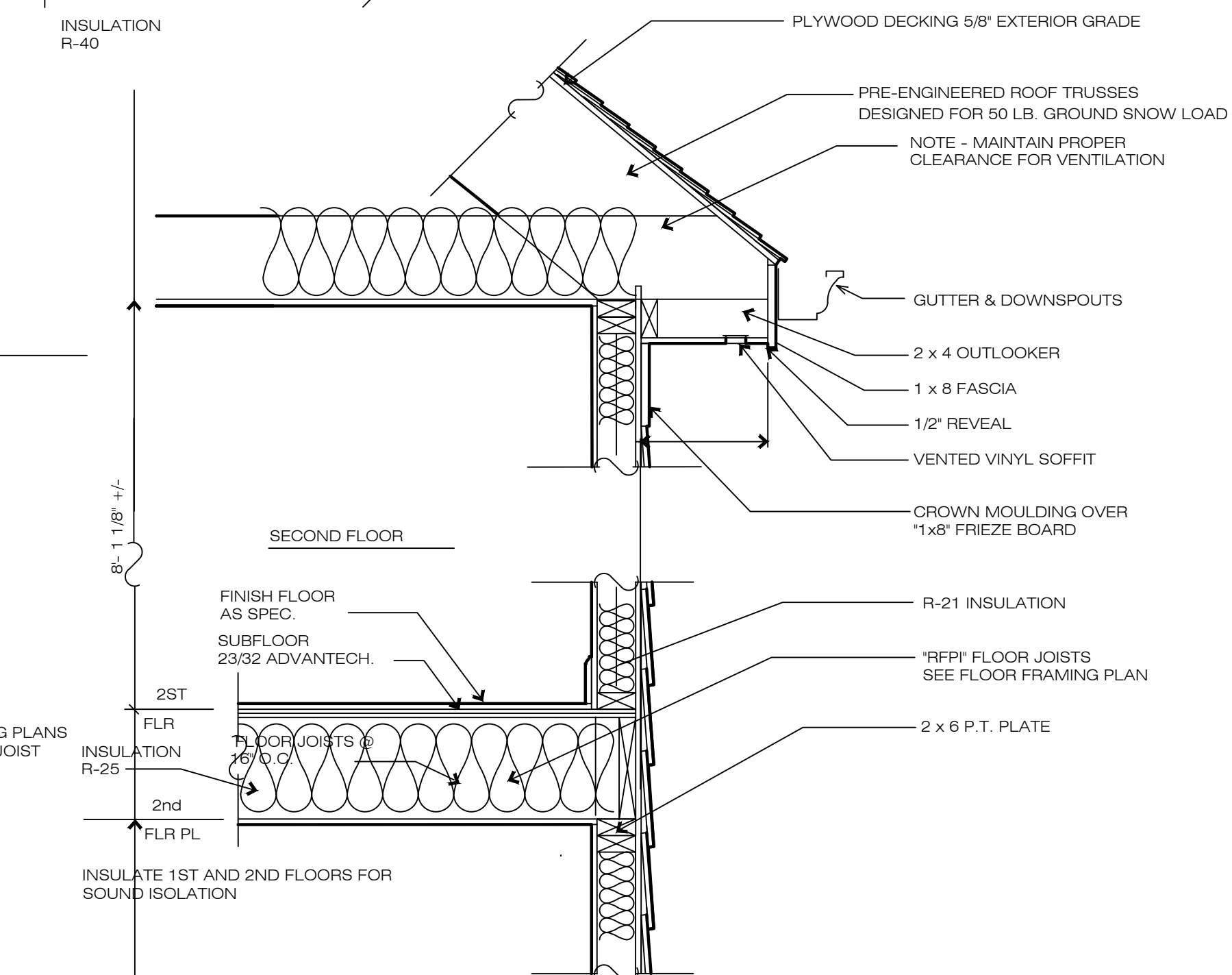
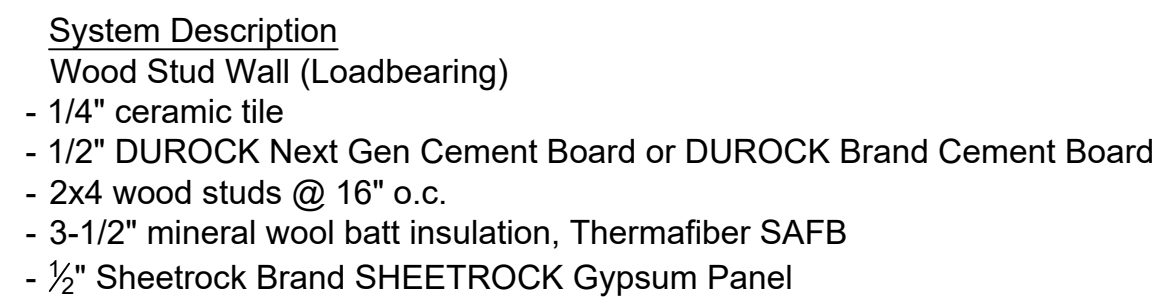


- 1/2" SHEETROCK Brand SHEETROCK Gypsum Panel
- 2x4 stud 16" o.c.
- 3" mineral wool batt
- 1/2" SHEETROCK Gypsum Panel
- joints finished



TYP. WALL SECTION (REINF. CONC.)



IT IS A VIOLATION OF THE LAW FOR ANY PERSON UNLESS ACTING UNDER THE DIRECTION OF A LICENSED ARCHITECT, TO ALTER THIS DOCUMENT IN ANY WAY. IF THIS DOCUMENT BEARING THE SEAL OF AN ARCHITECT IS ALTERED, THE ALTERING ARCHITECT SHALL AFFIX HIS/HER SEAL AND THE NOTATION "ALTERED BY:" FOLLOWED BY HIS/HER SIGNATURE AND THE DATE OF SUCH ALTERATION, AND A SPECIFIC DESCRIPTION OF THE ALTERATION.

39 OLD ALBANY POST ROAD
OSSINING, NY

[illegible]

PAUL B. JANKOVITZ, RA
ARCHITECTS/PLANNERS
62 YALE COURT
KINGSTON, NEW YORK 12401
PHONE (845) 532-3464
PBJAIA@AOL.COM
CONNECTICUT / NEW JERSEY / NEW YORK

39 OLD ALBANY POST ROAD
DUPLIX APARTMENT

DATE:
NOV. 5, 2019
PROJECT NO.
110519
SCALE:
1/4" = 1'-0"
DRAWING NO.

A-11.0