



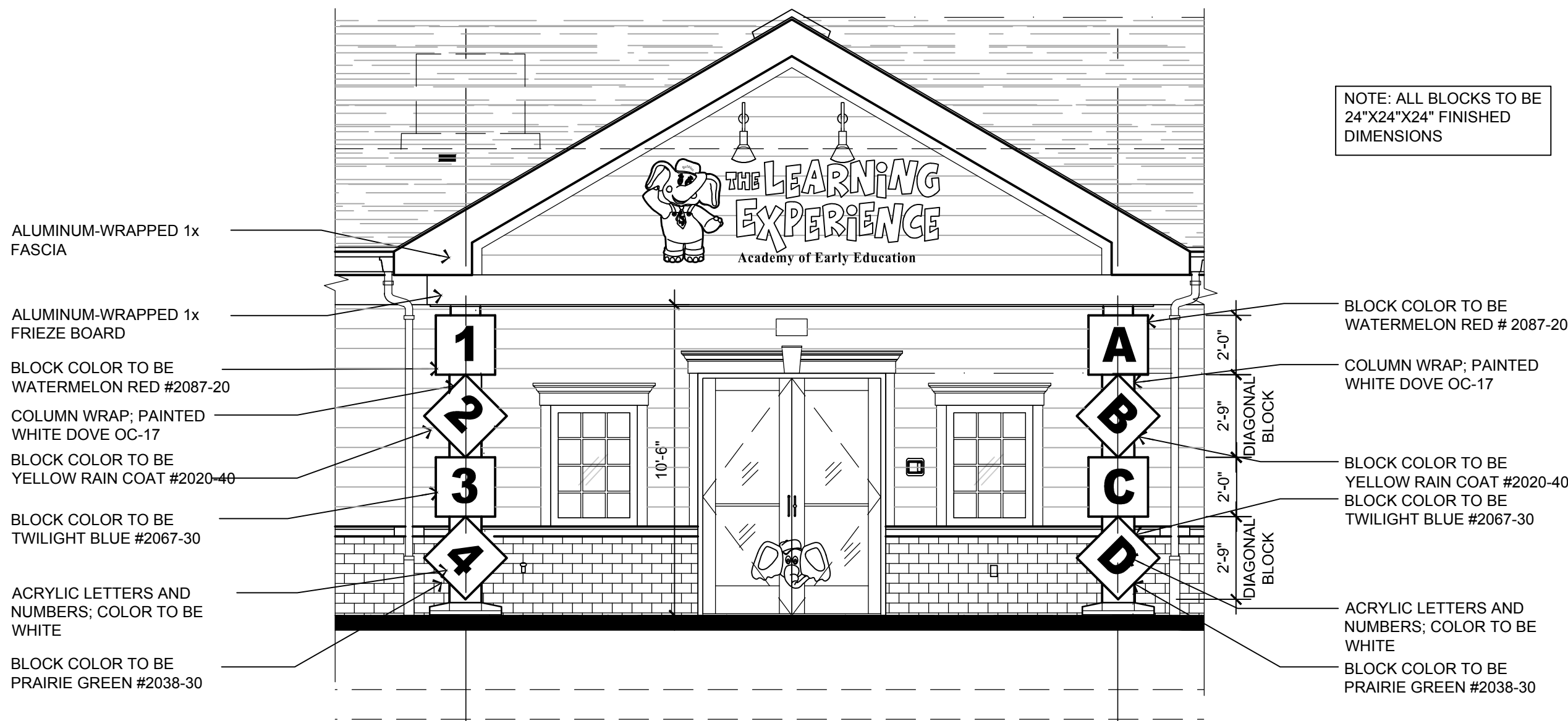
## 6 MONUMENT SIGNAGE PHOTO

SCALE: NTS



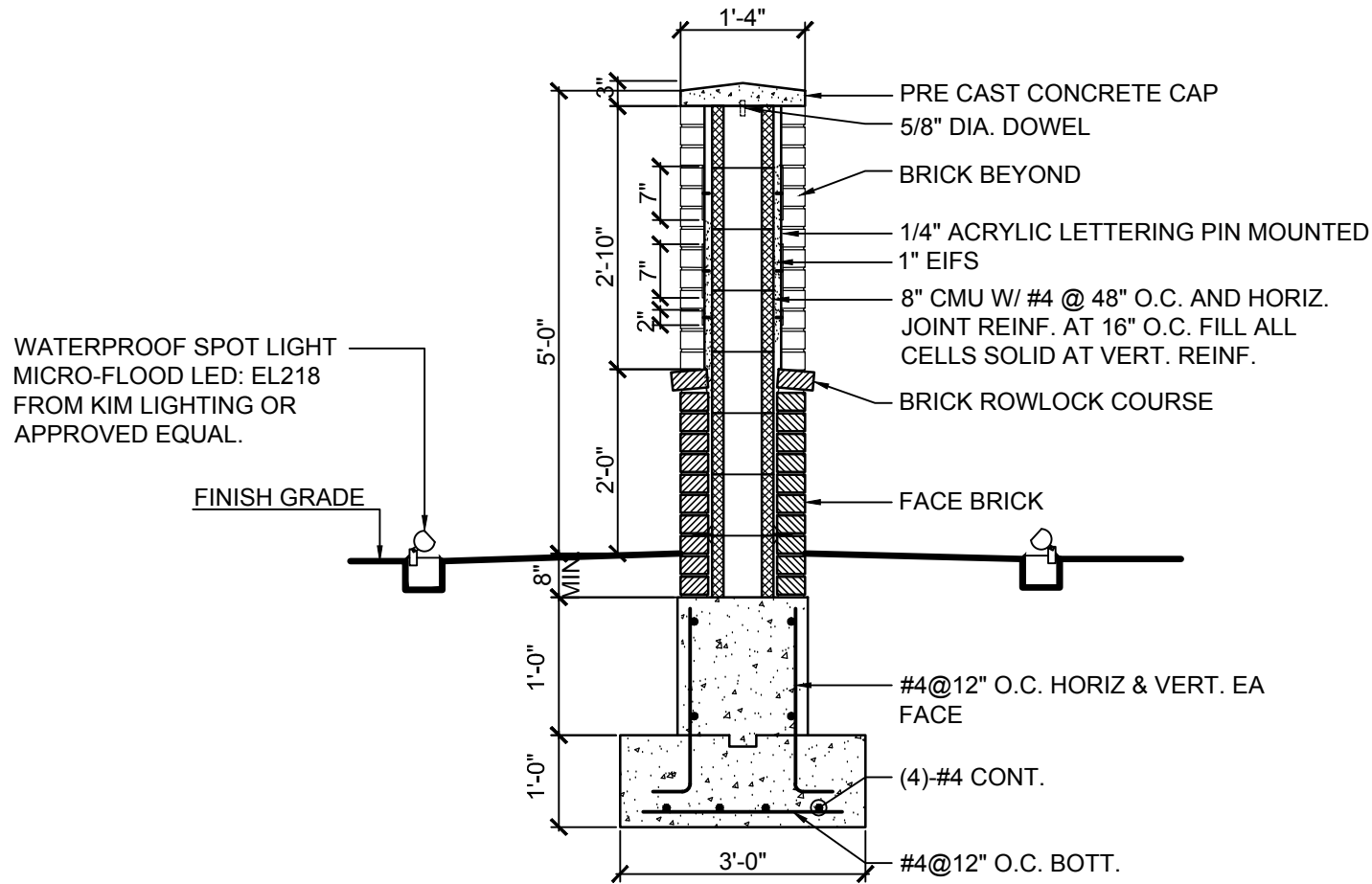
## 7 CANOPY SIGNAGE PHOTO

SCALE: NTS



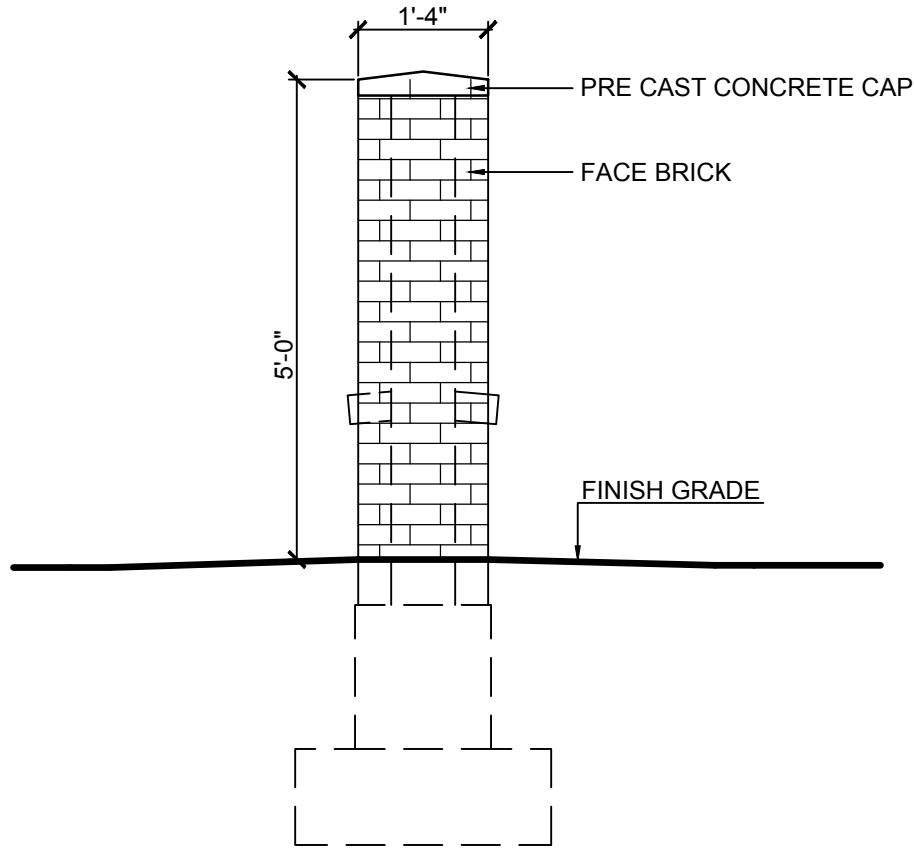
## 8 CANOPY COLUMN DETAIL

SCALE: 1/4" = 1'-0"



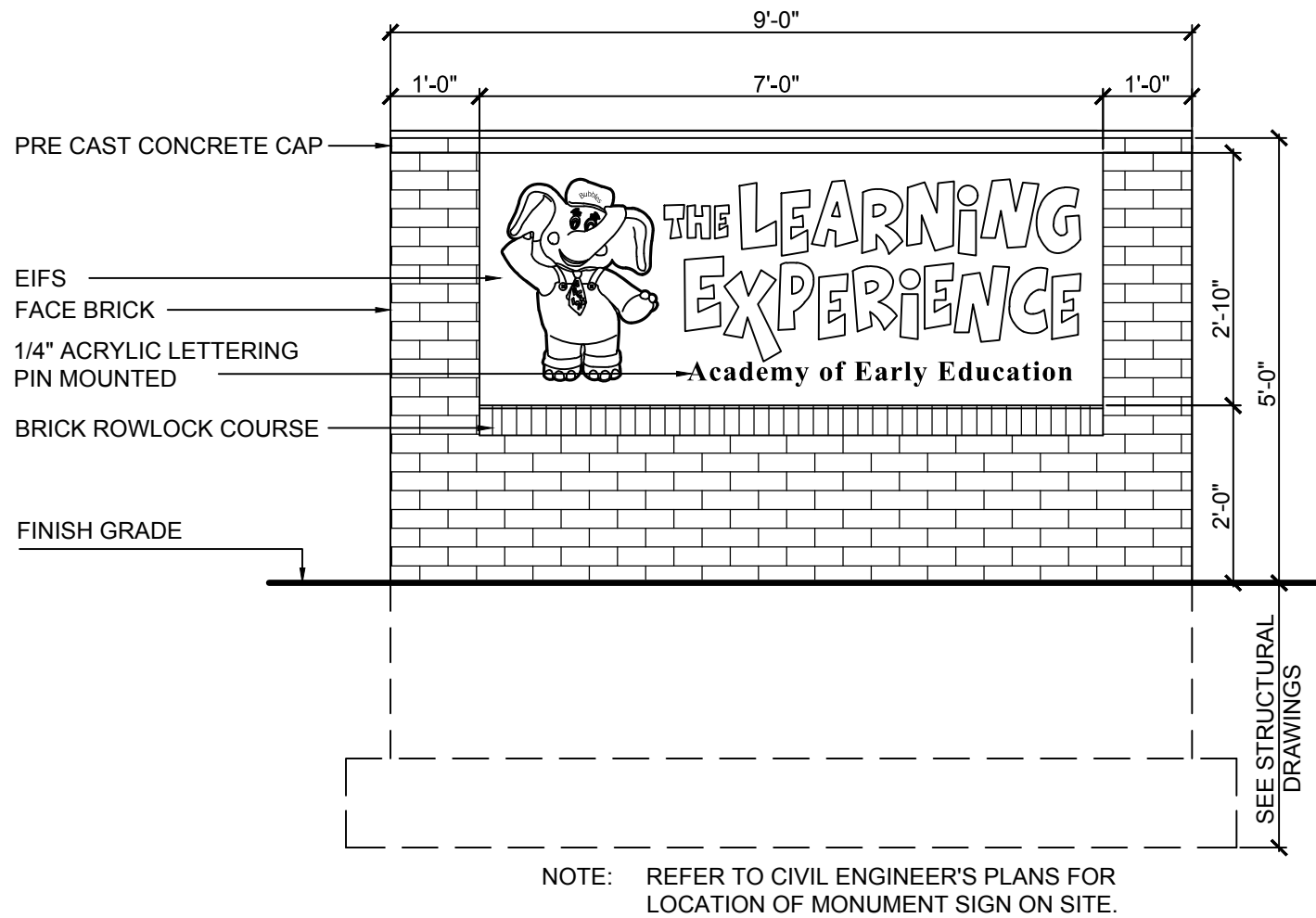
## 5 MONUMENT SIGNAGE SECTION

SCALE: 1/2" = 1'-0"



## 4 MONUMENT SIGNAGE ELEVATION

SCALE: 1/2" = 1'-0"



## 3 MONUMENT SIGNAGE ELEVATION

SCALE: 1/2" = 1'-0"

- GENERAL NOTES:**
1. CONTRACTOR SHALL VERIFY ALL FIELD CONDITIONS AND DIMENSIONS, PRIOR TO PROCEEDING WITH THE WORK AND SHALL REPORT ANY AND ALL DISCREPANCIES TO THE OFFICE OF THE ARCHITECT.
  2. SIGNAGE CONTRACTOR TO SUPPLY & INSTALL 'THE LEARNING EXPERIENCE' SIGN AS INDICATED ON DRAWINGS. SIGN SHALL BE PAN CHANNEL LETTERING. PROVIDE WHITE 3/16" ACRYLIC CAP WITH BLACK JEWELITE TRIM AND TRANSLUCENT VINYL FILM APPLIED AS PER SPECIFIED COLORS.
  3. ANCHORAGE SHOWN COMPLIES WITH 2015 IBC CHAPTER 16 AND APPENDIX H105.2 AND H105.3 FOR WITHSTANDING WIND LOADS PRODUCED BY 90 MPH WIND FOR 3 SECOND GUST.

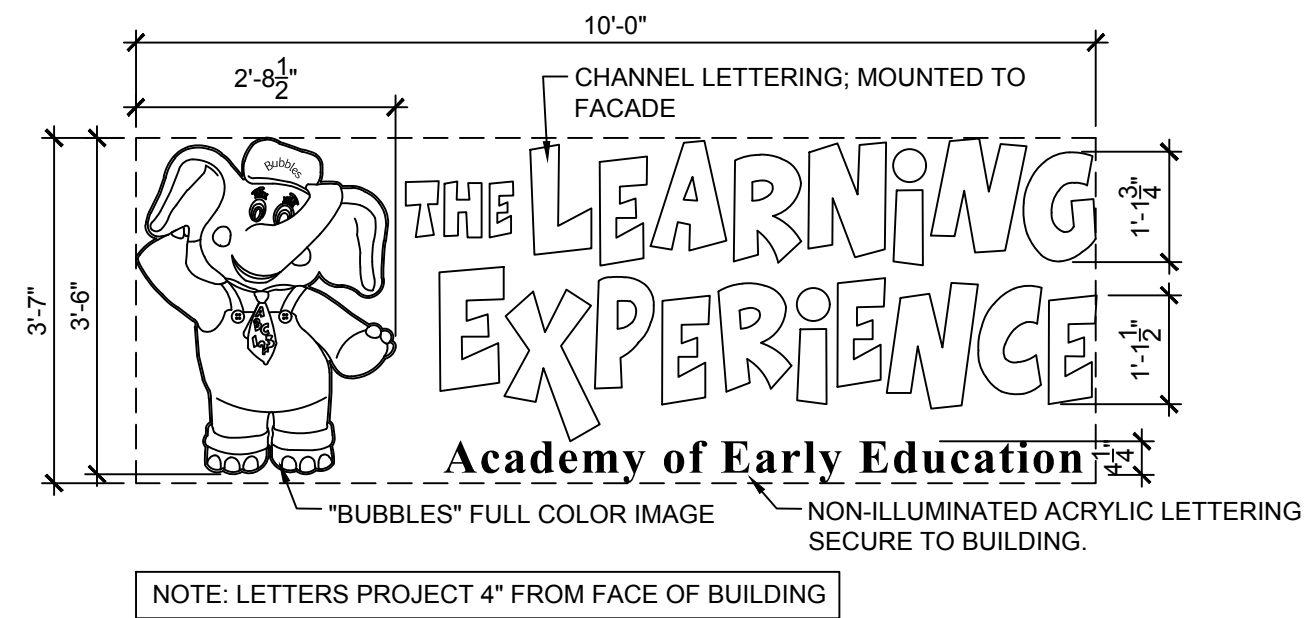
**NOTE:**  
"THE LEARNING EXPERIENCE" LOGO SIGN IS TO BE BY REQUIRED VENDOR. NO SUBSTITUTIONS ALLOWED.

A&F SIGN COMPANY  
28 EAST RAILWAY AVE.  
PATERSON, NJ 07503  
ATTN. FRANK FERUCCI JR.  
PH. 973-278-3707  
FAX. 973-278-8337

NOTE: SIGNAGE UNDER SEPARATE SIGN PERMIT APPLICATION.

## 2 SIGNAGE MOUNTING DETAIL

scale: 1 1/2" = 1'-0"



## 1 SIGNAGE ELEVATION

scale: 1/2" = 1'-0"

1. CONTRACTOR SHALL SUPERVISE AND DIRECT THE WORK, USING THE CONTRACTOR'S BEST SKILL AND ATTENTION. THE CONTRACTOR SHALL BE SOLELY RESPONSIBLE AND HAVE CONTROL OVER CONSTRUCTION MEANS, METHODS, TECHNIQUES, SEQUENCE, AND JOB SITE SAFETY.
2. GC MUST PROVIDE & INSTALL ALL PRODUCTS PER PLANS. ONLY SUBSTITUTED PRODUCTS NEED TO BE SUBMITTED TO THE ARCHITECT FOR APPROVAL. UNAPPROVED SUBSTITUTIONS WILL BE REPLACED AT THE EXPENSE OF THE GC.
3. VERBAL REPRESENTATION HAS NO VALUE AND ALL REQUESTS TO CHANGE ANY PRODUCTS OR SPECIFICATIONS PER PLANS, MUST BE SUBMITTED IN WRITING TO THE ARCHITECT & TLE FOR APPROVAL.

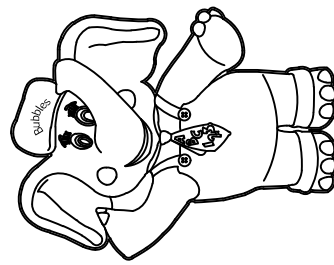


**Jarmel Kizel**  
ARCHITECTS AND ENGINEERS INC.

42 OKNER PARKWAY  
LIVINGSTON, NEW JERSEY 07039  
TEL: 973-994-9669  
FAX: 973-994-4069  
www.jarmelkizel.com

Architecture  
Engineering  
Interior Design  
Implementation Services

**THE LEARNING EXPERIENCE**  
**ACADEMY OF EARLY EDUCATION**  
**NORTH STATE ROAD**  
**ROSSINING, NEW YORK**



### ISSUE

NO.	DATE	DESCRIPTION	INT.
1	9/11/18	PLANNING	MBJ

### REVISION

NO.	DATE	DESCRIPTION	INT.

### PROFESSIONAL CERTIFICATION

**LICENSE NUMBER:** 024673  
**EXPIRATION DATE:** 30 SEPT 2020  
**MATTHEW B. JARMEL, AIA, MBA**

Project Number: <b>TLENY-S-17-155</b>	Scale: <b>AS NOTED</b>
Drawn By: <b>CS</b>	Approved By: <b>MBJ</b>

Drawing Name:

**MAIN ENTRY DETAILS/SITE SIGNAGE**

Drawing Number:

**SA-3.3**