

GOVERNMENT RECORDS SEARCHED / DATA CURRENCY TRACKING

STATE AND LOCAL RECORDS

SHWS: Inactive Hazardous Waste Disposal Sites in New York State

Referred to as the State Superfund Program, the Inactive Hazardous Waste Disposal Site Remedial Program is the cleanup program for inactive hazardous waste sites and now includes hazardous substance sites

Date of Government Version: 05/01/2007
Date Data Arrived at EDR: 06/13/2007
Date Made Active in Reports: 07/24/2007
Number of Days to Update: 41

Source: Department of Environmental Conservation
Telephone: 518-402-9622
Last EDR Contact: 06/13/2007
Next Scheduled EDR Contact: 09/10/2007
Data Release Frequency: Annually

HSWDS: Hazardous Substance Waste Disposal Site Inventory

The list includes any known or suspected hazardous substance waste disposal sites. Also included are sites delisted from the Registry of Inactive Hazardous Waste Disposal Sites and non-Registry sites that U.S. EPA Preliminary Assessment (PA) reports or Site Investigation (SI) reports were prepared. Hazardous Substance Waste Disposal Sites are eligible to be Superfund sites now that the New York State Superfund has been refinanced and changed. This means that the study inventory has served its purpose and will no longer be maintained as a separate entity. The last version of the study inventory is frozen in time. The sites on the study will not automatically be made Superfund sites, rather each site will be further evaluated for listing on the Registry. So overtime they will be added to the registry or not.

Date of Government Version: 01/01/2003
Date Data Arrived at EDR: 10/20/2006
Date Made Active in Reports: 11/30/2006
Number of Days to Update: 41

Source: Department of Environmental Conservation
Telephone: 518-402-9564
Last EDR Contact: 05/29/2007
Next Scheduled EDR Contact: 08/27/2007
Data Release Frequency: No Update Planned

DEL SHWS: Delisted Registry Sites

A database listing of sites delisted from the Registry of Inactive Hazardous Waste Disposal Sites.

Date of Government Version: 05/01/2007
Date Data Arrived at EDR: 06/13/2007
Date Made Active in Reports: 07/24/2007
Number of Days to Update: 41

Source: Department of Environmental Conservation
Telephone: 518-402-9622
Last EDR Contact: 06/13/2007
Next Scheduled EDR Contact: 09/10/2007
Data Release Frequency: Annually

SWF/LF: Facility Register

Solid Waste Facilities/Landfill Sites. SWF/LF type records typically contain an inventory of solid waste disposal facilities or landfills in a particular state. Depending on the state, these may be active or inactive facilities or open dumps that failed to meet RCRA Subtitle D Section 4004 criteria for solid waste landfills or disposal sites.

Date of Government Version: 05/01/2007
Date Data Arrived at EDR: 05/01/2007
Date Made Active in Reports: 05/23/2007
Number of Days to Update: 22

Source: Department of Environmental Conservation
Telephone: 518-457-2051
Last EDR Contact: 07/30/2007
Next Scheduled EDR Contact: 10/29/2007
Data Release Frequency: Semi-Annually

SWTIRE: Registered Waste Tire Storage & Facility List

A listing of facilities registered to accept waste tires.

Date of Government Version: 08/01/2006
Date Data Arrived at EDR: 11/15/2006
Date Made Active in Reports: 11/30/2006
Number of Days to Update: 15

Source: Department of Environmental Conservation
Telephone: 518-402-8694
Last EDR Contact: 08/15/2007
Next Scheduled EDR Contact: 11/12/2007
Data Release Frequency: Annually

SWRCY: Registered Recycling Facility List

A listing of recycling facilities.

GOVERNMENT RECORDS SEARCHED / DATA CURRENCY TRACKING

Date of Government Version: 05/01/2007
Date Data Arrived at EDR: 05/01/2007
Date Made Active in Reports: 05/23/2007
Number of Days to Update: 22

Source: Department of Environmental Conservation
Telephone: 518-402-8705
Last EDR Contact: 07/30/2007
Next Scheduled EDR Contact: 10/29/2007
Data Release Frequency: Semi-Annually

LTANKS: Spills Information Database

Leaking Storage Tank Incident Reports. These records contain an inventory of reported leaking storage tank incidents reported from 4/1/86 through the most recent update. They can be either leaking underground storage tanks or leaking aboveground storage tanks. The causes of the incidents are tank test failures, tank failures or tank overfills.

Date of Government Version: 04/02/2007
Date Data Arrived at EDR: 04/25/2007
Date Made Active in Reports: 05/23/2007
Number of Days to Update: 28

Source: Department of Environmental Conservation
Telephone: 518-402-9549
Last EDR Contact: 07/25/2007
Next Scheduled EDR Contact: 10/22/2007
Data Release Frequency: Varies

HIST LTANKS: Listing of Leaking Storage Tanks

A listing of leaking underground and aboveground storage tanks. The causes of the incidents are tank test failures, tank failures or tank overfills. In 2002, the Department of Environmental Conservation stopped providing updates to its original Spills Information Database. This database includes fields that are no longer available from the NYDEC as of January 1, 2002. Current information may be found in the NY LTANKS database. Department of Environmental Conservation.

Date of Government Version: 01/01/2002
Date Data Arrived at EDR: 07/08/2005
Date Made Active in Reports: 07/14/2005
Number of Days to Update: 6

Source: Department of Environmental Conservation
Telephone: 518-402-9549
Last EDR Contact: 07/07/2005
Next Scheduled EDR Contact: N/A
Data Release Frequency: No Update Planned

UST: Petroleum Bulk Storage (PBS) Database

Facilities that have petroleum storage capacities in excess of 1,100 gallons and less than 400,000 gallons.

Date of Government Version: 04/02/2007
Date Data Arrived at EDR: 04/25/2007
Date Made Active in Reports: 05/08/2007
Number of Days to Update: 13

Source: Department of Environmental Conservation
Telephone: 518-402-9549
Last EDR Contact: 07/25/2007
Next Scheduled EDR Contact: 10/22/2007
Data Release Frequency: No Update Planned

CBS UST: Chemical Bulk Storage Database

Facilities that store regulated hazardous substances in underground tanks of any size

Date of Government Version: 01/01/2002
Date Data Arrived at EDR: 02/20/2002
Date Made Active in Reports: 03/22/2002
Number of Days to Update: 30

Source: NYSDEC
Telephone: 518-402-9549
Last EDR Contact: 10/24/2005
Next Scheduled EDR Contact: 01/23/2006
Data Release Frequency: No Update Planned

MOSF UST: Major Oil Storage Facilities Database

Facilities that may be onshore facilities or vessels, with petroleum storage capacities of 400,000 gallons or greater.

Date of Government Version: 01/01/2002
Date Data Arrived at EDR: 02/20/2002
Date Made Active in Reports: 03/22/2002
Number of Days to Update: 30

Source: NYSDEC
Telephone: 518-402-9549
Last EDR Contact: 07/25/2005
Next Scheduled EDR Contact: 10/24/2005
Data Release Frequency: Varies

HIST UST: Historical Petroleum Bulk Storage Database

These facilities have petroleum storage capacities in excess of 1,100 gallons and less than 400,000 gallons. This database contains detailed information per site. It is no longer updated due to the sensitive nature of the information involved. See UST for more current data.

GOVERNMENT RECORDS SEARCHED / DATA CURRENCY TRACKING

Date of Government Version: 01/01/2002
Date Data Arrived at EDR: 06/02/2006
Date Made Active in Reports: 07/20/2006
Number of Days to Update: 48

Source: Department of Environmental Conservation
Telephone: 518-402-9549
Last EDR Contact: 10/23/2006
Next Scheduled EDR Contact: 01/22/2007
Data Release Frequency: Varies

AST: Petroleum Bulk Storage
Registered Aboveground Storage Tanks.

Date of Government Version: 04/02/2007
Date Data Arrived at EDR: 04/25/2007
Date Made Active in Reports: 05/08/2007
Number of Days to Update: 13

Source: Department of Environmental Conservation
Telephone: 518-402-9549
Last EDR Contact: 07/25/2007
Next Scheduled EDR Contact: 10/22/2007
Data Release Frequency: No Update Planned

CBS AST: Chemical Bulk Storage Database

Facilities that store regulated hazardous substances in aboveground tanks with capacities of 185 gallons or greater, and/or in underground tanks of any size.

Date of Government Version: 01/01/2002
Date Data Arrived at EDR: 02/20/2002
Date Made Active in Reports: 03/22/2002
Number of Days to Update: 30

Source: NYSDEC
Telephone: 518-402-9549
Last EDR Contact: 07/25/2005
Next Scheduled EDR Contact: 10/24/2005
Data Release Frequency: No Update Planned

HIST AST: Historical Petroleum Bulk Storage Database

These facilities have petroleum storage capabilities in excess of 1,100 gallons and less than 400,000 gallons. This database contains detailed information per site. No longer updated due to the sensitive nature of the information involved. See AST for more current data.

Date of Government Version: 01/01/2002
Date Data Arrived at EDR: 06/02/2006
Date Made Active in Reports: 07/20/2006
Number of Days to Update: 48

Source: Department of Environmental Conservation
Telephone: 518-402-9549
Last EDR Contact: 10/23/2006
Next Scheduled EDR Contact: 01/22/2007
Data Release Frequency: No Update Planned

MOSF AST: Major Oil Storage Facilities Database

Facilities that may be onshore facilities or vessels, with petroleum storage capacities of 400,000 gallons or greater.

Date of Government Version: 01/01/2002
Date Data Arrived at EDR: 02/20/2002
Date Made Active in Reports: 03/22/2002
Number of Days to Update: 30

Source: NYSDEC
Telephone: 518-402-9549
Last EDR Contact: 07/25/2005
Next Scheduled EDR Contact: 10/24/2005
Data Release Frequency: No Update Planned

NY MANIFEST: Facility and Manifest Data

Manifest is a document that lists and tracks hazardous waste from the generator through transporters to a TSD facility.

Date of Government Version: 10/26/2006
Date Data Arrived at EDR: 11/29/2006
Date Made Active in Reports: 01/05/2007
Number of Days to Update: 37

Source: Department of Environmental Conservation
Telephone: 518-402-8651
Last EDR Contact: 06/01/2007
Next Scheduled EDR Contact: 08/27/2007
Data Release Frequency: Annually

SPILLS: Spills Information Database

Data collected on spills reported to NYSDEC as required by one or more of the following: Article 12 of the Navigation Law, 6 NYCRR Section 613.8 (from PBS regs), or 6 NYCRR Section 595.2 (from CBS regs). It includes spills active as of April 1, 1986, as well as spills occurring since this date.

GOVERNMENT RECORDS SEARCHED / DATA CURRENCY TRACKING

Date of Government Version: 04/02/2007
Date Data Arrived at EDR: 04/25/2007
Date Made Active in Reports: 05/23/2007
Number of Days to Update: 28

Source: Department of Environmental Conservation
Telephone: 518-402-9549
Last EDR Contact: 07/25/2007
Next Scheduled EDR Contact: 10/22/2007
Data Release Frequency: Varies

HIST SPILLS: SPILLS Database

This database contains records of chemical and petroleum spill incidents. Under State law, petroleum and hazardous chemical spills that can impact the waters of the state must be reported by the spiller (and, in some cases, by anyone who has knowledge of the spills). In 2002, the Department of Environmental Conservation stopped providing updates to its original Spills Information Database. This database includes fields that are no longer available from the NYDEC as of January 1, 2002. Current information may be found in the NY SPILLS database. Department of Environmental Conservation.

Date of Government Version: 01/01/2002
Date Data Arrived at EDR: 07/08/2005
Date Made Active in Reports: 07/14/2005
Number of Days to Update: 6

Source: Department of Environmental Conservation
Telephone: 518-402-9549
Last EDR Contact: 07/07/2005
Next Scheduled EDR Contact: N/A
Data Release Frequency: No Update Planned

ENG CONTROLS: Registry of Engineering Controls

Environmental Remediation sites that have engineering controls in place.

Date of Government Version: 05/01/2007
Date Data Arrived at EDR: 06/13/2007
Date Made Active in Reports: 07/24/2007
Number of Days to Update: 41

Source: Department of Environmental Conservation
Telephone: 518-402-9553
Last EDR Contact: 06/13/2007
Next Scheduled EDR Contact: 09/10/2007
Data Release Frequency: Quarterly

INST CONTROL: Registry of Institutional Controls

Environmental Remediation sites that have institutional controls in place.

Date of Government Version: 05/01/2007
Date Data Arrived at EDR: 06/13/2007
Date Made Active in Reports: 07/24/2007
Number of Days to Update: 41

Source: Department of Environmental Conservation
Telephone: 518-402-9553
Last EDR Contact: 06/13/2007
Next Scheduled EDR Contact: 09/10/2007
Data Release Frequency: Quarterly

VCP: Voluntary Cleanup Agreements

New York established its Voluntary Cleanup Program (VCP) to address the environmental, legal and financial barriers that often hinder the redevelopment and reuse of contaminated properties. The Voluntary Cleanup Program was developed to enhance private sector cleanup of brownfields by enabling parties to remediate sites using private rather than public funds and to reduce the development pressures on "greenfield" sites.

Date of Government Version: 05/01/2007
Date Data Arrived at EDR: 06/13/2007
Date Made Active in Reports: 07/24/2007
Number of Days to Update: 41

Source: Department of Environmental Conservation
Telephone: 518-402-9711
Last EDR Contact: 06/13/2007
Next Scheduled EDR Contact: 09/10/2007
Data Release Frequency: Semi-Annually

DRYCLEANERS: Registered Drycleaners

A listing of all registered drycleaning facilities.

Date of Government Version: 06/15/2004
Date Data Arrived at EDR: 06/15/2004
Date Made Active in Reports: 07/29/2004
Number of Days to Update: 44

Source: Department of Environmental Conservation
Telephone: 518-402-8403
Last EDR Contact: 05/21/2004
Next Scheduled EDR Contact: N/A
Data Release Frequency: Varies

GOVERNMENT RECORDS SEARCHED / DATA CURRENCY TRACKING

BROWNFIELDS: Brownfields Site List

A Brownfield is any real property where redevelopment or re-use may be complicated by the presence or potential presence of a hazardous waste, petroleum, pollutant, or contaminant.

Date of Government Version: 05/01/2007
Date Data Arrived at EDR: 06/13/2007
Date Made Active in Reports: 07/24/2007
Number of Days to Update: 41

Source: Department of Environmental Conservation
Telephone: 518-402-9764
Last EDR Contact: 06/13/2007
Next Scheduled EDR Contact: 09/10/2007
Data Release Frequency: Semi-Annually

SPDES: State Pollutant Discharge Elimination System

New York State has a state program which has been approved by the United States Environmental Protection Agency for the control of wastewater and stormwater discharges in accordance with the Clean Water Act. Under New York State law the program is known as the State Pollutant Discharge Elimination System (SPDES) and is broader in scope than that required by the Clean Water Act in that it controls point source discharges to groundwaters as well as surface waters.

Date of Government Version: 05/09/2007
Date Data Arrived at EDR: 05/10/2007
Date Made Active in Reports: 05/23/2007
Number of Days to Update: 13

Source: Department of Environmental Conservation
Telephone: 518-402-8233
Last EDR Contact: 08/06/2007
Next Scheduled EDR Contact: 11/05/2007
Data Release Frequency: No Update Planned

AIRS: Air Emissions Data

Point source emissions inventory data.

Date of Government Version: 12/31/2002
Date Data Arrived at EDR: 09/13/2004
Date Made Active in Reports: 10/18/2004
Number of Days to Update: 35

Source: Department of Environmental Conservation
Telephone: 518-402-8452
Last EDR Contact: 05/21/2007
Next Scheduled EDR Contact: 08/20/2007
Data Release Frequency: Annually

MOSF: Major Oil Storage Facility Site Listing

These facilities may be onshore facilities or vessels, with petroleum storage capacities of 400,000 gallons or greater.

Date of Government Version: 04/02/2007
Date Data Arrived at EDR: 04/25/2007
Date Made Active in Reports: 05/23/2007
Number of Days to Update: 28

Source: Department of Environmental Conservation
Telephone: 518-402-9549
Last EDR Contact: 07/25/2007
Next Scheduled EDR Contact: 10/22/2007
Data Release Frequency: Quarterly

RES DECL: Restrictive Declarations Listing

A restrictive declaration is a covenant running with the land which binds the present and future owners of the property. As a condition of certain special permits, the City Planning Commission may require an applicant to sign and record a restrictive declaration that places specified conditions on the future use and development of the property. Certain restrictive declarations are indicated by a D on zoning maps.

Date of Government Version: 12/31/1992
Date Data Arrived at EDR: 01/31/2007
Date Made Active in Reports: 04/19/2007
Number of Days to Update: 78

Source: NYC Department of City Planning
Telephone: 212-720-3401
Last EDR Contact: 07/17/2007
Next Scheduled EDR Contact: 10/15/2007
Data Release Frequency: No Update Planned

CBS: Chemical Bulk Storage Site Listing

These facilities store regulated hazardous substances in aboveground tanks with capacities of 185 gallons or greater, and/or in underground tanks of any size

Date of Government Version: 04/02/2007
Date Data Arrived at EDR: 04/25/2007
Date Made Active in Reports: 05/23/2007
Number of Days to Update: 28

Source: Department of Environmental Conservation
Telephone: 518-402-9549
Last EDR Contact: 07/25/2007
Next Scheduled EDR Contact: 10/22/2007
Data Release Frequency: Quarterly

GOVERNMENT RECORDS SEARCHED / DATA CURRENCY TRACKING

E DESIGNATION: E DESIGNATION SITE LISTING

The (E (Environmental)) designation would ensure that sampling and remediation take place on the subject properties, and would avoid any significant impacts related to hazardous materials at these locations. The (E) designations would require that the fee owner of the sites conduct a testing and sampling protocol, and remediation where appropriate, to the satisfaction of the NYCDEP before the issuance of a building permit by the Department of Buildings pursuant to the provisions of Section 11-15 of the Zoning Resolution (Environmental Requirements). The (E) designations also include a mandatory construction-related health and safety plan which must be approved by NYCDEP.

Date of Government Version: 02/28/2007	Source: New York City Department of City Planning
Date Data Arrived at EDR: 04/25/2007	Telephone: 718-595-6658
Date Made Active in Reports: 05/23/2007	Last EDR Contact: 07/18/2007
Number of Days to Update: 28	Next Scheduled EDR Contact: 10/15/2007
	Data Release Frequency: Varies

TRIBAL RECORDS

INDIAN RESERV: Indian Reservations

This map layer portrays Indian administered lands of the United States that have any area equal to or greater than 640 acres.

Date of Government Version: 12/31/2005	Source: USGS
Date Data Arrived at EDR: 12/08/2006	Telephone: 202-208-3710
Date Made Active in Reports: 01/11/2007	Last EDR Contact: 08/09/2007
Number of Days to Update: 34	Next Scheduled EDR Contact: 11/05/2007
	Data Release Frequency: Semi-Annually

INDIAN LUST R1: Leaking Underground Storage Tanks on Indian Land

A listing of leaking underground storage tank locations on Indian Land.

Date of Government Version: 12/01/2006	Source: EPA Region 1
Date Data Arrived at EDR: 12/01/2006	Telephone: 617-918-1313
Date Made Active in Reports: 01/29/2007	Last EDR Contact: 05/21/2007
Number of Days to Update: 59	Next Scheduled EDR Contact: 08/20/2007
	Data Release Frequency: Varies

INDIAN LUST R4: Leaking Underground Storage Tanks on Indian Land

LUSTs on Indian land in Florida, Mississippi and North Carolina.

Date of Government Version: 03/20/2007	Source: EPA Region 4
Date Data Arrived at EDR: 04/16/2007	Telephone: 404-562-8677
Date Made Active in Reports: 05/14/2007	Last EDR Contact: 05/21/2007
Number of Days to Update: 28	Next Scheduled EDR Contact: 08/20/2007
	Data Release Frequency: Semi-Annually

INDIAN LUST R10: Leaking Underground Storage Tanks on Indian Land

LUSTs on Indian land in Alaska, Idaho, Oregon and Washington.

Date of Government Version: 05/23/2007	Source: EPA Region 10
Date Data Arrived at EDR: 05/24/2007	Telephone: 206-553-2857
Date Made Active in Reports: 07/05/2007	Last EDR Contact: 05/21/2007
Number of Days to Update: 42	Next Scheduled EDR Contact: 08/20/2007
	Data Release Frequency: Quarterly

INDIAN LUST R9: Leaking Underground Storage Tanks on Indian Land

LUSTs on Indian land in Arizona, California, New Mexico and Nevada

Date of Government Version: 06/18/2007	Source: Environmental Protection Agency
Date Data Arrived at EDR: 06/18/2007	Telephone: 415-972-3372
Date Made Active in Reports: 07/05/2007	Last EDR Contact: 05/21/2007
Number of Days to Update: 17	Next Scheduled EDR Contact: 08/20/2007
	Data Release Frequency: Quarterly

GOVERNMENT RECORDS SEARCHED / DATA CURRENCY TRACKING

INDIAN LUST R6: Leaking Underground Storage Tanks on Indian Land LUSTs on Indian land in New Mexico and Oklahoma.

Date of Government Version: 01/04/2005	Source: EPA Region 6
Date Data Arrived at EDR: 01/21/2005	Telephone: 214-665-6597
Date Made Active in Reports: 02/28/2005	Last EDR Contact: 05/21/2007
Number of Days to Update: 38	Next Scheduled EDR Contact: 08/20/2007
	Data Release Frequency: Varies

INDIAN LUST R8: Leaking Underground Storage Tanks on Indian Land LUSTs on Indian land in Colorado, Montana, North Dakota, South Dakota, Utah and Wyoming.

Date of Government Version: 05/30/2007	Source: EPA Region 8
Date Data Arrived at EDR: 05/31/2007	Telephone: 303-312-6271
Date Made Active in Reports: 07/05/2007	Last EDR Contact: 05/21/2007
Number of Days to Update: 35	Next Scheduled EDR Contact: 08/20/2007
	Data Release Frequency: Quarterly

INDIAN LUST R7: Leaking Underground Storage Tanks on Indian Land LUSTs on Indian land in Iowa, Kansas, and Nebraska

Date of Government Version: 06/01/2007	Source: EPA Region 7
Date Data Arrived at EDR: 06/14/2007	Telephone: 913-551-7003
Date Made Active in Reports: 07/05/2007	Last EDR Contact: 05/21/2007
Number of Days to Update: 21	Next Scheduled EDR Contact: 08/20/2007
	Data Release Frequency: Varies

INDIAN UST R5: Underground Storage Tanks on Indian Land

Date of Government Version: 12/02/2004	Source: EPA Region 5
Date Data Arrived at EDR: 12/29/2004	Telephone: 312-886-6136
Date Made Active in Reports: 02/04/2005	Last EDR Contact: 05/21/2007
Number of Days to Update: 37	Next Scheduled EDR Contact: 08/20/2007
	Data Release Frequency: Varies

INDIAN UST R8: Underground Storage Tanks on Indian Land

Date of Government Version: 05/30/2007	Source: EPA Region 8
Date Data Arrived at EDR: 05/31/2007	Telephone: 303-312-6137
Date Made Active in Reports: 07/05/2007	Last EDR Contact: 05/21/2007
Number of Days to Update: 35	Next Scheduled EDR Contact: 08/20/2007
	Data Release Frequency: Quarterly

INDIAN UST R10: Underground Storage Tanks on Indian Land

Date of Government Version: 05/23/2007	Source: EPA Region 10
Date Data Arrived at EDR: 05/24/2007	Telephone: 206-553-2857
Date Made Active in Reports: 07/05/2007	Last EDR Contact: 05/21/2007
Number of Days to Update: 42	Next Scheduled EDR Contact: 08/20/2007
	Data Release Frequency: Quarterly

INDIAN UST R9: Underground Storage Tanks on Indian Land

Date of Government Version: 06/18/2007	Source: EPA Region 9
Date Data Arrived at EDR: 06/18/2007	Telephone: 415-972-3368
Date Made Active in Reports: 07/05/2007	Last EDR Contact: 05/21/2007
Number of Days to Update: 17	Next Scheduled EDR Contact: 08/20/2007
	Data Release Frequency: Quarterly

INDIAN UST R7: Underground Storage Tanks on Indian Land

GOVERNMENT RECORDS SEARCHED / DATA CURRENCY TRACKING

Date of Government Version: 06/01/2007
Date Data Arrived at EDR: 06/14/2007
Date Made Active in Reports: 07/05/2007
Number of Days to Update: 21

Source: EPA Region 7
Telephone: 913-551-7003
Last EDR Contact: 05/21/2007
Next Scheduled EDR Contact: 08/20/2007
Data Release Frequency: Varies

INDIAN UST R6: Underground Storage Tanks on Indian Land

Date of Government Version: 06/06/2007
Date Data Arrived at EDR: 06/07/2007
Date Made Active in Reports: 07/05/2007
Number of Days to Update: 28

Source: EPA Region 6
Telephone: 214-665-7591
Last EDR Contact: 05/21/2007
Next Scheduled EDR Contact: 08/20/2007
Data Release Frequency: Semi-Annually

INDIAN UST R4: Underground Storage Tanks on Indian Land

Date of Government Version: 03/20/2007
Date Data Arrived at EDR: 04/16/2007
Date Made Active in Reports: 05/14/2007
Number of Days to Update: 28

Source: EPA Region 4
Telephone: 404-562-9424
Last EDR Contact: 05/21/2007
Next Scheduled EDR Contact: 08/20/2007
Data Release Frequency: Semi-Annually

INDIAN UST R1: Underground Storage Tanks on Indian Land

A listing of underground storage tank locations on Indian Land.

Date of Government Version: 12/01/2006
Date Data Arrived at EDR: 12/01/2006
Date Made Active in Reports: 01/29/2007
Number of Days to Update: 59

Source: EPA, Region 1
Telephone: 617-918-1313
Last EDR Contact: 05/21/2007
Next Scheduled EDR Contact: 08/20/2007
Data Release Frequency: Varies

EDR PROPRIETARY RECORDS

Manufactured Gas Plants: EDR Proprietary Manufactured Gas Plants

The EDR Proprietary Manufactured Gas Plant Database includes records of coal gas plants (manufactured gas plants) compiled by EDR's researchers. Manufactured gas sites were used in the United States from the 1800's to 1950's to produce a gas that could be distributed and used as fuel. These plants used whale oil, rosin, coal, or a mixture of coal, oil, and water that also produced a significant amount of waste. Many of the byproducts of the gas production, such as coal tar (oily waste containing volatile and non-volatile chemicals), sludges, oils and other compounds are potentially hazardous to human health and the environment. The byproduct from this process was frequently disposed of directly at the plant site and can remain or spread slowly, serving as a continuous source of soil and groundwater contamination.

Date of Government Version: N/A
Date Data Arrived at EDR: N/A
Date Made Active in Reports: N/A
Number of Days to Update: N/A

Source: EDR, Inc.
Telephone: N/A
Last EDR Contact: N/A
Next Scheduled EDR Contact: N/A
Data Release Frequency: No Update Planned

FEDERAL RECORDS

MEDICAL CENTERS: Provider of Services Listing

A listing of hospitals with Medicare provider number, produced by Centers of Medicare & Medicaid Services, a federal agency within the U.S. Department of Health & Human Services.

Date of Government Version: 06/01/1998
Date Data Arrived at EDR: 11/10/2005
Date Made Active in Reports: N/A
Number of Days to Update: 0

Source: Centers for Medicare & Medicaid Services
Telephone: 410-786-3000
Last EDR Contact: 01/12/2007
Next Scheduled EDR Contact: N/A
Data Release Frequency: N/A

GOVERNMENT RECORDS SEARCHED / DATA CURRENCY TRACKING

COLLEGES: Integrated Postsecondary Education Data

The National Center for Education Statistics' primary database on integrated postsecondary education in the United States.

Date of Government Version: N/A
Date Data Arrived at EDR: 10/12/2005
Date Made Active in Reports: N/A
Number of Days to Update: 0

Source: National Center for Education Statistics
Telephone: 202-502-7300
Last EDR Contact: 09/22/2006
Next Scheduled EDR Contact: N/A
Data Release Frequency: N/A

PUBLIC SCHOOLS: Public Schools

The National Center for Education Statistics' primary database on elementary and secondary public education in the United States. It is a comprehensive, annual, national statistical database of all public elementary and secondary schools and school districts, which contains data that are comparable across all states.

Date of Government Version: N/A
Date Data Arrived at EDR: 07/13/2004
Date Made Active in Reports: N/A
Number of Days to Update: 0

Source: National Center for Education statistics
Telephone: 202-502-7300
Last EDR Contact: 07/11/2007
Next Scheduled EDR Contact: 10/08/2007
Data Release Frequency: N/A

PRIVATE SCHOOLS: Private Schools of the United States

The National Center for Education Statistics' primary database on private school locations in the United States.

Date of Government Version: N/A
Date Data Arrived at EDR: 10/07/2005
Date Made Active in Reports: N/A
Number of Days to Update: 0

Source: National Center for Education Statistics
Telephone: 202-502-7300
Last EDR Contact: 09/22/2006
Next Scheduled EDR Contact: N/A
Data Release Frequency: N/A

HOSPITALS: AHA Hospital Guide

The database includes a listing of hospitals based on the American Hospital Association's annual survey of hospitals.

Date of Government Version: N/A
Date Data Arrived at EDR: 10/19/1994
Date Made Active in Reports: N/A
Number of Days to Update: 0

Source: American Hospital Association
Telephone: 800-242-2626
Last EDR Contact: 09/22/2006
Next Scheduled EDR Contact: N/A
Data Release Frequency: N/A

NURSING HOMES: Directory of Nursing Homes

Information on Medicare and Medicaid certified nursing homes in the United States.

Date of Government Version: N/A
Date Data Arrived at EDR: 10/11/2005
Date Made Active in Reports: N/A
Number of Days to Update: 0

Source: N/A
Telephone: 800-568-3282
Last EDR Contact: 09/22/2006
Next Scheduled EDR Contact: N/A
Data Release Frequency: N/A

COUNTY RECORDS

CORTLAND COUNTY:

Cortland County Storage Tank Listing

A listing of aboveground storage tank sites located in Cortland County.

Date of Government Version: 04/26/2007
Date Data Arrived at EDR: 05/02/2007
Date Made Active in Reports: 05/30/2007
Number of Days to Update: 28

Source: Cortland County Health Department
Telephone: 607-753-5035
Last EDR Contact: 05/29/2007
Next Scheduled EDR Contact: 08/27/2007
Data Release Frequency: Quarterly

GOVERNMENT RECORDS SEARCHED / DATA CURRENCY TRACKING

Cortland County Storage Tank Listing

A listing of underground storage tank sites located in Cortland County.

Date of Government Version: 04/26/2007
Date Data Arrived at EDR: 05/02/2007
Date Made Active in Reports: 05/30/2007
Number of Days to Update: 28

Source: Cortland County Health Department
Telephone: 607-753-5035
Last EDR Contact: 05/29/2007
Next Scheduled EDR Contact: 08/27/2007
Data Release Frequency: Quarterly

NASSAU COUNTY:

Registered Tank Database

A listing of aboveground storage tank sites located in Nassau County.

Date of Government Version: 05/21/2003
Date Data Arrived at EDR: 05/27/2003
Date Made Active in Reports: 06/09/2003
Number of Days to Update: 13

Source: Nassau County Health Department
Telephone: 516-571-3314
Last EDR Contact: 07/30/2007
Next Scheduled EDR Contact: 10/29/2007
Data Release Frequency: No Update Planned

Storage Tank Database

A listing of aboveground storage tank sites located in Nassau County.

Date of Government Version: 01/04/2007
Date Data Arrived at EDR: 02/07/2007
Date Made Active in Reports: 03/26/2007
Number of Days to Update: 47

Source: Nassau County Office of the Fire Marshal
Telephone: 516-572-1000
Last EDR Contact: 08/06/2007
Next Scheduled EDR Contact: 11/05/2007
Data Release Frequency: Varies

Registered Tank Database

A listing of underground storage tank sites located in Nassau County.

Date of Government Version: 05/21/2003
Date Data Arrived at EDR: 05/27/2003
Date Made Active in Reports: 06/09/2003
Number of Days to Update: 13

Source: Nassau County Health Department
Telephone: 516-571-3314
Last EDR Contact: 07/30/2007
Next Scheduled EDR Contact: 10/29/2007
Data Release Frequency: No Update Planned

Storage Tank Database

A listing of underground storage tank sites located in Nassau County.

Date of Government Version: 01/04/2007
Date Data Arrived at EDR: 02/07/2007
Date Made Active in Reports: 03/23/2007
Number of Days to Update: 44

Source: Nassau County Office of the Fire Marshal
Telephone: 516-572-1000
Last EDR Contact: 08/06/2007
Next Scheduled EDR Contact: 11/05/2007
Data Release Frequency: Varies

ROCKLAND COUNTY:

Petroleum Bulk Storage Database

A listing of aboveground storage tank sites located in Rockland County.

Date of Government Version: 05/10/2007
Date Data Arrived at EDR: 05/11/2007
Date Made Active in Reports: 05/30/2007
Number of Days to Update: 19

Source: Rockland County Health Department
Telephone: 914-364-2605
Last EDR Contact: 07/02/2007
Next Scheduled EDR Contact: 10/01/2007
Data Release Frequency: Quarterly

GOVERNMENT RECORDS SEARCHED / DATA CURRENCY TRACKING

Petroleum Bulk Storage Database

A listing of underground storage tank sites located in Rockland County.

Date of Government Version: 05/10/2007
Date Data Arrived at EDR: 05/11/2007
Date Made Active in Reports: 05/30/2007
Number of Days to Update: 19

Source: Rockland County Health Department
Telephone: 914-364-2605
Last EDR Contact: 07/02/2007
Next Scheduled EDR Contact: 10/01/2007
Data Release Frequency: Quarterly

SUFFOLK COUNTY:

Storage Tank Database

A listing of aboveground storage tank sites located in Suffolk County.

Date of Government Version: 09/13/2006
Date Data Arrived at EDR: 01/11/2007
Date Made Active in Reports: 02/07/2007
Number of Days to Update: 27

Source: Suffolk County Department of Health Services
Telephone: 631-854-2521
Last EDR Contact: 06/01/2007
Next Scheduled EDR Contact: 08/27/2007
Data Release Frequency: Annually

Storage Tank Database

A listing of underground storage tank sites located in Suffolk County.

Date of Government Version: 09/13/2006
Date Data Arrived at EDR: 01/11/2007
Date Made Active in Reports: 02/07/2007
Number of Days to Update: 27

Source: Suffolk County Department of Health Services
Telephone: 631-854-2521
Last EDR Contact: 06/01/2007
Next Scheduled EDR Contact: 08/27/2007
Data Release Frequency: Annually

WESTCHESTER COUNTY:

Listing of Storage Tanks

A listing of aboveground storage tank sites located in Westchester County.

Date of Government Version: 05/05/2005
Date Data Arrived at EDR: 05/31/2005
Date Made Active in Reports: 06/30/2005
Number of Days to Update: 30

Source: Westchester County Department of Health
Telephone: 914-813-5161
Last EDR Contact: 05/29/2007
Next Scheduled EDR Contact: 08/27/2007
Data Release Frequency: Varies

Listing of Storage Tanks

A listing of underground storage tank sites located in Westchester County.

Date of Government Version: 05/05/2005
Date Data Arrived at EDR: 05/31/2005
Date Made Active in Reports: 06/30/2005
Number of Days to Update: 30

Source: Westchester County Department of Health
Telephone: 914-813-5161
Last EDR Contact: 05/29/2007
Next Scheduled EDR Contact: 08/27/2007
Data Release Frequency: Varies

OTHER DATABASE(S)

Depending on the geographic area covered by this report, the data provided in these specialty databases may or may not be complete. For example, the existence of wetlands information data in a specific report does not mean that all wetlands in the area covered by the report are included. Moreover, the absence of any reported wetlands information does not necessarily mean that wetlands do not exist in the area covered by the report.

GOVERNMENT RECORDS SEARCHED / DATA CURRENCY TRACKING

CT MANIFEST: Hazardous Waste Manifest Data

Facility and manifest data. Manifest is a document that lists and tracks hazardous waste from the generator through transporters to a tsd facility.

Date of Government Version: 12/31/2004
Date Data Arrived at EDR: 02/17/2006
Date Made Active in Reports: 04/07/2006
Number of Days to Update: 49

Source: Department of Environmental Protection
Telephone: 860-424-3375
Last EDR Contact: 06/13/2007
Next Scheduled EDR Contact: 09/10/2007
Data Release Frequency: Annually

NJ MANIFEST: Manifest Information

Hazardous waste manifest information.

Date of Government Version: 04/01/2007
Date Data Arrived at EDR: 04/05/2007
Date Made Active in Reports: 05/08/2007
Number of Days to Update: 33

Source: Department of Environmental Protection
Telephone: N/A
Last EDR Contact: 07/03/2007
Next Scheduled EDR Contact: 10/01/2007
Data Release Frequency: Annually

PA MANIFEST: Manifest Information

Hazardous waste manifest information.

Date of Government Version: 12/31/2005
Date Data Arrived at EDR: 03/17/2006
Date Made Active in Reports: 06/06/2006
Number of Days to Update: 81

Source: Department of Environmental Protection
Telephone: N/A
Last EDR Contact: 06/11/2007
Next Scheduled EDR Contact: 09/10/2007
Data Release Frequency: Annually

RI MANIFEST: Manifest information

Hazardous waste manifest information

Date of Government Version: 04/09/2007
Date Data Arrived at EDR: 04/12/2007
Date Made Active in Reports: 04/27/2007
Number of Days to Update: 15

Source: Department of Environmental Management
Telephone: 401-222-2797
Last EDR Contact: 06/18/2007
Next Scheduled EDR Contact: 09/17/2007
Data Release Frequency: Annually

VT MANIFEST: Hazardous Waste Manifest Data

Hazardous waste manifest information.

Date of Government Version: 12/31/2006
Date Data Arrived at EDR: 04/03/2007
Date Made Active in Reports: 04/24/2007
Number of Days to Update: 21

Source: Department of Environmental Conservation
Telephone: 802-241-3443
Last EDR Contact: 08/13/2007
Next Scheduled EDR Contact: 11/12/2007
Data Release Frequency: Annually

WI MANIFEST: Manifest Information

Hazardous waste manifest information.

Date of Government Version: 12/31/2006
Date Data Arrived at EDR: 04/27/2007
Date Made Active in Reports: 06/08/2007
Number of Days to Update: 42

Source: Department of Natural Resources
Telephone: N/A
Last EDR Contact: 07/09/2007
Next Scheduled EDR Contact: 10/08/2007
Data Release Frequency: Annually

Oil/Gas Pipelines: This data was obtained by EDR from the USGS in 1994. It is referred to by USGS as GeoData Digital Line Graphs from 1:100,000-Scale Maps. It was extracted from the transportation category including some oil, but primarily gas pipelines.

Electric Power Transmission Line Data

Source: PennWell Corporation
Telephone: (800) 823-6277

This map includes information copyrighted by PennWell Corporation. This information is provided on a best effort basis and PennWell Corporation does not guarantee its accuracy nor warrant its fitness for any particular purpose. Such information has been reprinted with the permission of PennWell.

GOVERNMENT RECORDS SEARCHED / DATA CURRENCY TRACKING

Sensitive Receptors: There are individuals deemed sensitive receptors due to their fragile immune systems and special sensitivity to environmental discharges. These sensitive receptors typically include the elderly, the sick, and children. While the location of all sensitive receptors cannot be determined, EDR indicates those buildings and facilities - schools, daycares, hospitals, medical centers, and nursing homes - where individuals who are sensitive receptors are likely to be located.

AHA Hospitals:

Source: American Hospital Association, Inc.

Telephone: 312-280-5991

The database includes a listing of hospitals based on the American Hospital Association's annual survey of hospitals.

Medical Centers: Provider of Services Listing

Source: Centers for Medicare & Medicaid Services

Telephone: 410-786-3000

A listing of hospitals with Medicare provider number, produced by Centers of Medicare & Medicaid Services, a federal agency within the U.S. Department of Health and Human Services.

Nursing Homes

Source: National Institutes of Health

Telephone: 301-594-6248

Information on Medicare and Medicaid certified nursing homes in the United States.

Public Schools

Source: National Center for Education Statistics

Telephone: 202-502-7300

The National Center for Education Statistics' primary database on elementary and secondary public education in the United States. It is a comprehensive, annual, national statistical database of all public elementary and secondary schools and school districts, which contains data that are comparable across all states.

Private Schools

Source: National Center for Education Statistics

Telephone: 202-502-7300

The National Center for Education Statistics' primary database on private school locations in the United States.

Daycare Centers: Day Care Providers

Source: Department of Health

Telephone: 212-676-2444

Flood Zone Data: This data, available in select counties across the country, was obtained by EDR in 1999 from the Federal Emergency Management Agency (FEMA). Data depicts 100-year and 500-year flood zones as defined by FEMA.

NWI: National Wetlands Inventory. This data, available in select counties across the country, was obtained by EDR in 2002 and 2005 from the U.S. Fish and Wildlife Service.

State Wetlands Data: Freshwater Wetlands

Source: Department of Environmental Conservation

Telephone: 518-402-8961

STREET AND ADDRESS INFORMATION

© 2007 Tele Atlas North America, Inc. All rights reserved. This material is proprietary and the subject of copyright protection and other intellectual property rights owned by or licensed to Tele Atlas North America, Inc. The use of this material is subject to the terms of a license agreement. You will be held liable for any unauthorized copying or disclosure of this material.

GEOCHECK® - PHYSICAL SETTING SOURCE ADDENDUM

TARGET PROPERTY ADDRESS

JH MACK - BRIARCLIFF MANOR - 530 N. STATE ROAD
530 NORTH STATE ROAD
BRIARCLIFF MANOR, NY 10562

TARGET PROPERTY COORDINATES

Latitude (North):	41.16550 - 41° 9' 55.8"
Longitude (West):	73.8221 - 73° 49' 19.6"
Universal Tranverse Mercator:	Zone 18
UTM X (Meters):	598818.6
UTM Y (Meters):	4557586.0
Elevation:	327 ft. above sea level

USGS TOPOGRAPHIC MAP

Target Property Map:	41073-B7 OSSINING, NY
Most Recent Revision:	1979

EDR's GeoCheck Physical Setting Source Addendum is provided to assist the environmental professional in forming an opinion about the impact of potential contaminant migration.

Assessment of the impact of contaminant migration generally has two principle investigative components:

1. Groundwater flow direction, and
2. Groundwater flow velocity.

Groundwater flow direction may be impacted by surface topography, hydrology, hydrogeology, characteristics of the soil, and nearby wells. Groundwater flow velocity is generally impacted by the nature of the geologic strata.

GEOCHECK® - PHYSICAL SETTING SOURCE SUMMARY

GROUNDWATER FLOW DIRECTION INFORMATION

Groundwater flow direction for a particular site is best determined by a qualified environmental professional using site-specific well data. If such data is not reasonably ascertainable, it may be necessary to rely on other sources of information, such as surface topographic information, hydrologic information, hydrogeologic data collected on nearby properties, and regional groundwater flow information (from deep aquifers).

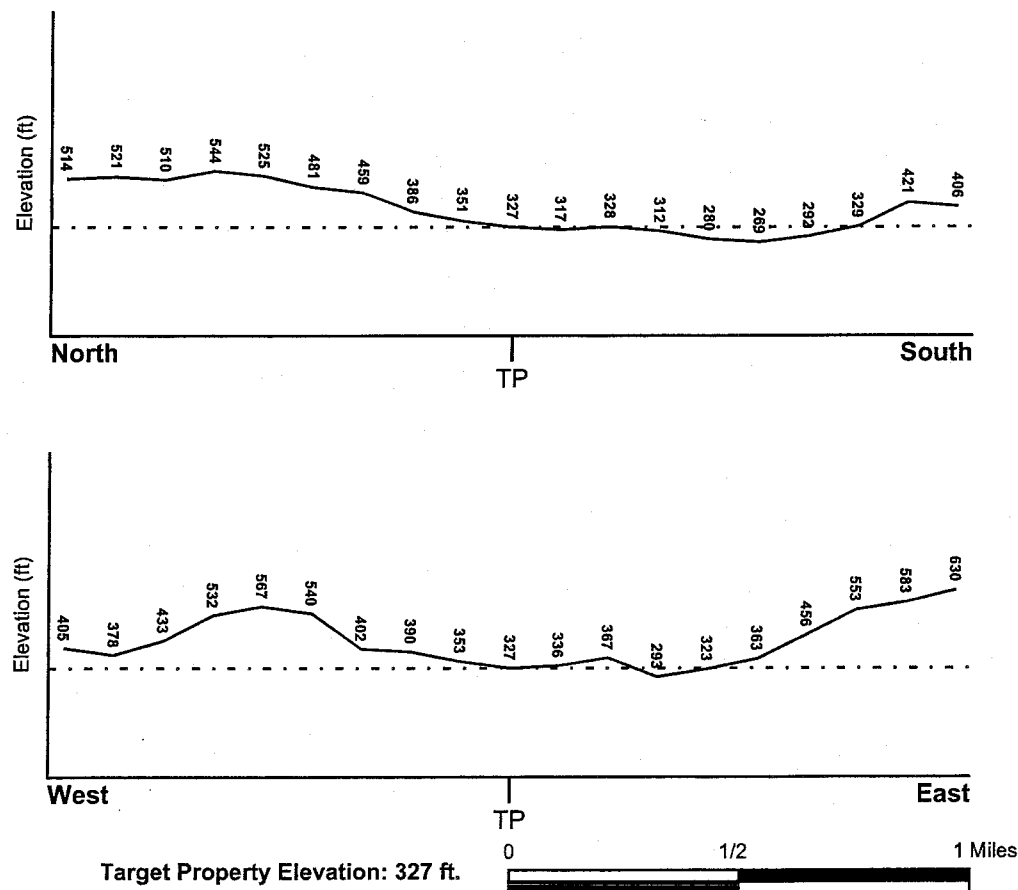
TOPOGRAPHIC INFORMATION

Surface topography may be indicative of the direction of surficial groundwater flow. This information can be used to assist the environmental professional in forming an opinion about the impact of nearby contaminated properties or, should contamination exist on the target property, what downgradient sites might be impacted.

TARGET PROPERTY TOPOGRAPHY

General Topographic Gradient: General SE

SURROUNDING TOPOGRAPHY: ELEVATION PROFILES



Source: Topography has been determined from the USGS 7.5' Digital Elevation Model and should be evaluated on a relative (not an absolute) basis. Relative elevation information between sites of close proximity should be field verified.

GEOCHECK® - PHYSICAL SETTING SOURCE SUMMARY

HYDROLOGIC INFORMATION

Surface water can act as a hydrologic barrier to groundwater flow. Such hydrologic information can be used to assist the environmental professional in forming an opinion about the impact of nearby contaminated properties or, should contamination exist on the target property, what downgradient sites might be impacted.

Refer to the Physical Setting Source Map following this summary for hydrologic information (major waterways and bodies of water).

FEMA FLOOD ZONE

Target Property County
WESTCHESTER, NY

FEMA Flood
Electronic Data
YES - refer to the Overview Map and Detail Map

Flood Plain Panel at Target Property: 3612410002B

Additional Panels in search area:
3609210005B
3610210001B
3609190010C
3609190005B
3609040001C

NATIONAL WETLAND INVENTORY

NWI Quad at Target Property
OSSINING

NWI Electronic
Data Coverage
YES - refer to the Overview Map and Detail Map

HYDROGEOLOGIC INFORMATION

Hydrogeologic information obtained by installation of wells on a specific site can often be an indicator of groundwater flow direction in the immediate area. Such hydrogeologic information can be used to assist the environmental professional in forming an opinion about the impact of nearby contaminated properties or, should contamination exist on the target property, what downgradient sites might be impacted.

Site-Specific Hydrogeological Data:*

Search Radius: 1.25 miles
Status: Not found

AQUIFLOW®

Search Radius: 1.000 Mile.

EDR has developed the AQUIFLOW Information System to provide data on the general direction of groundwater flow at specific points. EDR has reviewed reports submitted by environmental professionals to regulatory authorities at select sites and has extracted the date of the report, groundwater flow direction as determined hydrogeologically, and the depth to water table.

<u>MAP ID</u>	<u>LOCATION</u> <u>FROM TP</u>	<u>GENERAL DIRECTION</u> <u>GROUNDWATER FLOW</u>
Not Reported		

GEOCHECK® - PHYSICAL SETTING SOURCE SUMMARY

GROUNDWATER FLOW VELOCITY INFORMATION

Groundwater flow velocity information for a particular site is best determined by a qualified environmental professional using site specific geologic and soil strata data. If such data are not reasonably ascertainable, it may be necessary to rely on other sources of information, including geologic age identification, rock stratigraphic unit and soil characteristics data collected on nearby properties and regional soil information. In general, contaminant plumes move more quickly through sandy-gravelly types of soils than silty-clayey types of soils.

GEOLOGIC INFORMATION IN GENERAL AREA OF TARGET PROPERTY

Geologic information can be used by the environmental professional in forming an opinion about the relative speed at which contaminant migration may be occurring.

ROCK STRATIGRAPHIC UNIT

Era: Precambrian
System: Precambrian
Series: Paragneiss and schist
Code: Ym (decoded above as Era, System & Series)

GEOLOGIC AGE IDENTIFICATION

Category: Metamorphic Rocks

Geologic Age and Rock Stratigraphic Unit Source: P.G. Schruben, R.E. Arndt and W.J. Bawiec, Geology of the Conterminous U.S. at 1:2,500,000 Scale - a digital representation of the 1974 P.B. King and H.M. Beikman Map, USGS Digital Data Series DDS - 11 (1994).

DOMINANT SOIL COMPOSITION IN GENERAL AREA OF TARGET PROPERTY

The U.S. Department of Agriculture's (USDA) Soil Conservation Service (SCS) leads the National Cooperative Soil Survey (NCSS) and is responsible for collecting, storing, maintaining and distributing soil survey information for privately owned lands in the United States. A soil map in a soil survey is a representation of soil patterns in a landscape. Soil maps for STATSGO are compiled by generalizing more detailed (SSURGO) soil survey maps. The following information is based on Soil Conservation Service STATSGO data.

Soil Component Name: HOLLIS
Soil Surface Texture: very stony - loam
Hydrologic Group: Class C/D - Drained/undrained hydrology class of soils that can be drained and classified.
Soil Drainage Class: Well drained. Soils have intermediate water holding capacity. Depth to water table is more than 6 feet.

Hydric Status: Soil does not meet the requirements for a hydric soil.

Corrosion Potential - Uncoated Steel: LOW

Depth to Bedrock Min: > 10 inches

Depth to Bedrock Max: > 20 inches

GEOCHECK® - PHYSICAL SETTING SOURCE SUMMARY

Soil Layer Information							
Layer	Boundary		Soil Texture Class	Classification		Permeability Rate (in/hr)	Soil Reaction (pH)
	Upper	Lower		AASHTO Group	Unified Soil		
1	0 inches	2 inches	very stony - loam	Granular materials (35 pct. or less passing No. 200), Silty, or Clayey Gravel and Sand.	COARSE-GRAINED SOILS, Sands, Sands with fines, Silty Sand.	Max: 6.00 Min: 0.60	Max: 6.00 Min: 4.50
2	2 inches	15 inches	gravelly - fine sandy loam	Granular materials (35 pct. or less passing No. 200), Silty, or Clayey Gravel and Sand.	COARSE-GRAINED SOILS, Sands, Sands with fines, Silty Sand.	Max: 6.00 Min: 0.60	Max: 6.00 Min: 4.50
3	15 inches	19 inches	unweathered bedrock	Not reported	Not reported	Max: 0.00 Min: 0.00	Max: 0.00 Min: 0.00

OTHER SOIL TYPES IN AREA

Based on Soil Conservation Service STATSGO data, the following additional subordinant soil types may appear within the general area of target property.

Soil Surface Textures: unweathered bedrock
loam
gravelly - loam

Surficial Soil Types: unweathered bedrock
loam
gravelly - loam

Shallow Soil Types: No Other Soil Types

Deeper Soil Types: fine sandy loam
gravelly - sandy loam
gravelly - fine sandy loam

LOCAL / REGIONAL WATER AGENCY RECORDS

EDR Local/Regional Water Agency records provide water well information to assist the environmental professional in assessing sources that may impact ground water flow direction, and in forming an opinion about the impact of contaminant migration on nearby drinking water wells.

GEOCHECK® - PHYSICAL SETTING SOURCE SUMMARY

WELL SEARCH DISTANCE INFORMATION

<u>DATABASE</u>	<u>SEARCH DISTANCE (miles)</u>
Federal USGS	1.000
Federal FRDS PWS	Nearest PWS within 1 mile
State Database	1.000

FEDERAL USGS WELL INFORMATION

<u>MAP ID</u>	<u>WELL ID</u>	<u>LOCATION FROM TP</u>
1	USGS2127576	0 - 1/8 Mile NW
2	USGS2127586	1/8 - 1/4 Mile NNE
3	USGS2127588	1/8 - 1/4 Mile NE
4	USGS2127597	1/4 - 1/2 Mile NNE
6	USGS2127828	1/4 - 1/2 Mile WSW
7	USGS2127712	1/2 - 1 Mile SE
8	USGS2127685	1/2 - 1 Mile NW
9	USGS2127616	1/2 - 1 Mile ENE
10	USGS2127977	1/2 - 1 Mile SSE
11	USGS2127447	1/2 - 1 Mile NNW
12	USGS2127746	1/2 - 1 Mile ESE
13	USGS2127956	1/2 - 1 Mile SSE
14	USGS2127498	1/2 - 1 Mile North

FEDERAL FRDS PUBLIC WATER SUPPLY SYSTEM INFORMATION

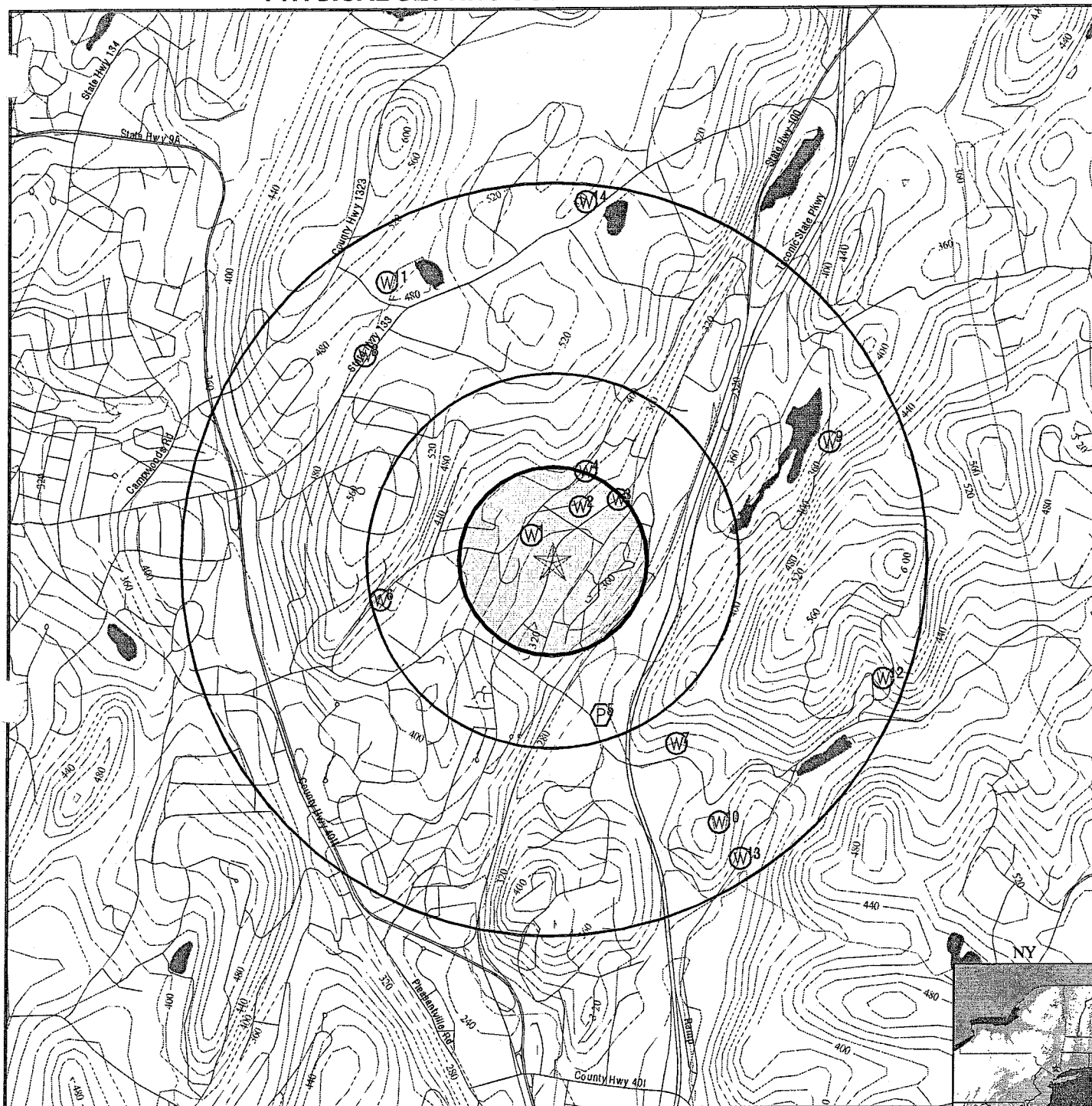
<u>MAP ID</u>	<u>WELL ID</u>	<u>LOCATION FROM TP</u>
5	NY0003451	1/4 - 1/2 Mile SSE

Note: PWS System location is not always the same as well location.

STATE DATABASE WELL INFORMATION

<u>MAP ID</u>	<u>WELL ID</u>	<u>LOCATION FROM TP</u>
No Wells Found		

PHYSICAL SETTING SOURCE MAP - 02006920.2r



- County Boundary
- Major Roads
- Contour Lines
- Earthquake epicenter, Richter 5 or greater
- Water Wells
- Public Water Supply Wells
- Cluster of Multiple Icons

- Groundwater Flow Direction
- Indeterminate Groundwater Flow at Location
- Groundwater Flow Varies at Location
- Closest Hydrogeological Data
- Oil, gas or related wells

SITE NAME: JH Mack - Briarcliff Manor - 530 N. State Road
 ADDRESS: 530 North State Road
 Briarcliff Manor NY 10562
 LAT/LONG: 41.1655 / 73.8221

CLIENT: ECOL Sciences
 CONTACT: Dave Loeffler
 INQUIRY #: 02006920.2r
 DATE: August 16, 2007 12:25 pm

GEOCHECK® - PHYSICAL SETTING SOURCE MAP FINDINGS

Map ID
Direction
Distance
Elevation

Database EDR ID Number

1
NW
0 - 1/8 Mile
Higher

FED USGS USGS2127576

Agency cd:	USGS	Site no:	410959073492301
Site name:	WE 152		
Latitude:	410959		
Longitude:	0734925	Dec lat:	41.16648418
Dec lon:	-73.82319013	Coor meth:	M
Coor accr:	F	Latlong datum:	NAD27
Dec latlong datum:	NAD83	District:	36
State:	36	County:	119
Country:	US	Land net:	Not Reported
Location map:	BULL GW-35	Map scale:	Not Reported
Altitude:	360.00		
Altitude method:	Interpolated from topographic map		
Altitude accuracy:	5		
Altitude datum:	National Geodetic Vertical Datum of 1929		
Hydrologic:	Lower Hudson. Connecticut, New Jersey, New York. Area = 720 sq.mi.		
Topographic:	Not Reported		
Site type:	Ground-water other than Spring	Date construction:	Not Reported
Date inventoried:	Not Reported	Mean greenwich time offset:	EST
Local standard time flag:	N		
Type of ground water site:	Single well, other than collector or Ranney type		
Aquifer Type:	Not Reported		
Aquifer:	BEDROCK		
Well depth:	125	Hole depth:	Not Reported
Source of depth data:	Not Reported		
Project number:	BULLGW-35		
Real time data flag:	Not Reported	Daily flow data begin date:	Not Reported
Daily flow data end date:	Not Reported	Daily flow data count:	Not Reported
Peak flow data begin date:	Not Reported	Peak flow data end date:	Not Reported
Peak flow data count:	Not Reported	Water quality data begin date:	Not Reported
Water quality data end date:	Not Reported	Water quality data count:	Not Reported
Ground water data begin date:	Not Reported	Ground water data end date:	Not Reported
Ground water data count:	Not Reported		

Ground-water levels, Number of Measurements: 0

2
NNE
1/8 - 1/4 Mile
Higher

FED USGS USGS2127586

Agency cd:	USGS	Site no:	411003073491301
Site name:	WE 151		
Latitude:	411003		
Longitude:	0734916	Dec lat:	41.16759528
Dec lon:	-73.82069006	Coor meth:	M
Coor accr:	F	Latlong datum:	NAD27
Dec latlong datum:	NAD83	District:	36
State:	36	County:	119
Country:	US	Land net:	Not Reported
Location map:	BULL GW-35	Map scale:	Not Reported

GEOCHECK® - PHYSICAL SETTING SOURCE MAP FINDINGS

Altitude: 325.00
 Altitude method: Interpolated from topographic map
 Altitude accuracy: 5
 Altitude datum: National Geodetic Vertical Datum of 1929
 Hydrologic: Lower Hudson. Connecticut, New Jersey, New York. Area = 720 sq.mi.
 Topographic: Not Reported
 Site type: Ground-water other than Spring Date construction: Not Reported
 Date inventoried: Not Reported Mean greenwich time offset: EST
 Local standard time flag: N
 Type of ground water site: Single well, other than collector or Ranney type
 Aquifer Type: Not Reported
 Aquifer: SAND
 Well depth: 16.0 Hole depth: Not Reported
 Source of depth data: Not Reported
 Project number: BULLGW-35
 Real time data flag: Not Reported
 Daily flow data end date: Not Reported
 Peak flow data begin date: Not Reported
 Peak flow data count: Not Reported
 Water quality data begin date: Not Reported
 Water quality data end date: Not Reported
 Ground water data begin date: Not Reported
 Ground water data count: Not Reported

Ground-water levels, Number of Measurements: 0

3
 NE
 1/8 - 1/4 Mile
 Higher

FED USGS USGS2127588

Agency cd: USGS Site no: 411004073490501
 Site name: WE1197
 Latitude: 411004
 Longitude: 0734909 Dec lat: 41.16787305
 Dec lon: -73.81874556 Coord meth: M
 Coord acc: F Latlong datum: NAD27
 Dec latlong datum: NAD83 District: 36
 State: 36 County: 119
 Country: US Land net: Not Reported
 Location map: BULL GW-35 Map scale: Not Reported
 Altitude: 370.00
 Altitude method: Interpolated from topographic map
 Altitude accuracy: 5
 Altitude datum: National Geodetic Vertical Datum of 1929
 Hydrologic: Lower Hudson. Connecticut, New Jersey, New York. Area = 720 sq.mi.
 Topographic: Not Reported
 Site type: Ground-water other than Spring Date construction: Not Reported
 Date inventoried: Not Reported Mean greenwich time offset: EST
 Local standard time flag: N
 Type of ground water site: Single well, other than collector or Ranney type
 Aquifer Type: Not Reported
 Aquifer: BEDROCK
 Well depth: 77.0 Hole depth: Not Reported
 Source of depth data: Not Reported
 Project number: BULLGW-35
 Real time data flag: Not Reported
 Daily flow data end date: Not Reported
 Peak flow data begin date: Not Reported

GEOCHECK® - PHYSICAL SETTING SOURCE MAP FINDINGS

Peak flow data count: Not Reported
Water quality data end date: Not Reported
Ground water data begin date: Not Reported
Ground water data count: Not Reported

Water quality data begin date: Not Reported
Water quality data count: Not Reported
Ground water data end date: Not Reported

Ground-water levels, Number of Measurements: 0

4

NNE
1/4 - 1/2 Mile
Higher

FED USGS USGS2127597

Agency cd:	USGS	Site no:	411007073491201
Site name:	WE1292		
Latitude:	411008		
Longitude:	0734915	Dec lat:	41.16898415
Dec lon:	-73.82041229	Coor meth:	M
Coor accr:	F	Latlong datum:	NAD27
Dec latlong datum:	NAD83	District:	36
State:	36	County:	119
Country:	US	Land net:	Not Reported
Location map:	BULL GW-35	Map scale:	Not Reported
Altitude:	380.00		
Altitude method:	Interpolated from topographic map		
Altitude accuracy:	5		
Altitude datum:	National Geodetic Vertical Datum of 1929		
Hydrologic:	Lower Hudson. Connecticut, New Jersey, New York. Area = 720 sq.mi.		
Topographic:	Not Reported		
Site type:	Ground-water other than Spring	Date construction:	Not Reported
Date inventoried:	Not Reported	Mean greenwich time offset:	EST
Local standard time flag:	N		
Type of ground water site:	Single well, other than collector or Ranney type		
Aquifer Type:	Not Reported		
Aquifer:	BEDROCK		
Well depth:	120	Hole depth:	Not Reported
Source of depth data:	Not Reported		
Project number:	BULLGW-35		
Real time data flag:	Not Reported	Daily flow data begin date:	Not Reported
Daily flow data end date:	Not Reported	Daily flow data count:	Not Reported
Peak flow data begin date:	Not Reported	Peak flow data end date:	Not Reported
Peak flow data count:	Not Reported	Water quality data begin date:	Not Reported
Water quality data end date:	Not Reported	Water quality data count:	Not Reported
Ground water data begin date:	Not Reported	Ground water data end date:	Not Reported
Ground water data count:	Not Reported		

Ground-water levels, Number of Measurements: 0

5

SSE
1/4 - 1/2 Mile
Lower

FRDS PWS NY0003451

PWS ID:	NY0003451	PWS Status:	Active
Date Initiated:	Not Reported	Date Deactivated:	Not Reported
PWS Name:	OSSINING WATER DEPARTMENT		
	RESERVOIR ROAD		
	OSSINING, NY 10562		

GEOCHECK® - PHYSICAL SETTING SOURCE MAP FINDINGS

Addressee / Facility: System Owner/Responsible Party
FAIELLA GENNARO
OSSINING VILLAGE BOARD
16 CROTON AVENUE
OSSINING, NY 10562

Facility Latitude: 41 09 34
Facility Latitude: 41 11 25
City Served: OSSINING
Treatment Class: Not Reported

Facility Longitude: 073 49 12
Facility Longitude: 073 51 55
Population: Not Reported

Violations information not reported.

6

WSW
1/4 - 1/2 Mile
Higher

FED USGS USGS2127828

Agency cd:	USGS	Site no:	410950073495301
Site name:	WE2852		
Latitude:	410950		
Longitude:	0734953	Dec lat:	41.16398421
Dec lon:	-73.83096813	Coor meth:	M
Coor accr:	S	Latlong datum:	NAD27
Dec latlong datum:	NAD83	District:	36
State:	36	County:	119
Country:	US	Land net:	Not Reported
Location map:	OSSINING Q-25-2	Map scale:	24000
Altitude:	Not Reported		
Altitude method:	Not Reported		
Altitude accuracy:	Not Reported		
Altitude datum:	Not Reported		
Hydrologic:	Not Reported		
Topographic:	Not Reported		
Site type:	Ground-water other than Spring	Date construction:	Not Reported
Date inventoried:	Not Reported	Mean greenwich time offset:	EST
Local standard time flag:	N		
Type of ground water site:	Single well, other than collector or Ranney type		
Aquifer Type:	Not Reported		
Aquifer:	Not Reported		
Well depth:	Not Reported	Hole depth:	Not Reported
Source of depth data:	Not Reported		
Project number:	443616700		
Real time data flag:	Not Reported	Daily flow data begin date:	Not Reported
Daily flow data end date:	Not Reported	Daily flow data count:	Not Reported
Peak flow data begin date:	Not Reported	Peak flow data end date:	Not Reported
Peak flow data count:	Not Reported	Water quality data begin date:	Not Reported
Water quality data end date:	Not Reported	Water quality data count:	Not Reported
Ground water data begin date:	Not Reported	Ground water data end date:	Not Reported
Ground water data count:	Not Reported		

Ground-water levels, Number of Measurements: 0

7

SE
1/2 - 1 Mile
Lower

FED USGS USGS2127712

GEOCHECK® - PHYSICAL SETTING SOURCE MAP FINDINGS

Agency cd:	USGS	Site no:	410928073485401
Site name:	WE 916		
Latitude:	410930		
Longitude:	0734858	Dec lat:	41.15842875
Dec lon:	-73.81568985	Coor meth:	M
Coor accr:	F	Latlong datum:	NAD27
Dec latlong datum:	NAD83	District:	36
State:	36	County:	119
Country:	US	Land net:	Not Reported
Location map:	BULL GW-35	Map scale:	Not Reported
Altitude:	300.00		
Altitude method:	Interpolated from topographic map		
Altitude accuracy:	5		
Altitude datum:	National Geodetic Vertical Datum of 1929		
Hydrologic:	Lower Hudson. Connecticut, New Jersey, New York. Area = 720 sq.mi.		
Topographic:	Not Reported		
Site type:	Ground-water other than Spring	Date construction:	Not Reported
Date inventoried:	Not Reported	Mean greenwich time offset:	EST
Local standard time flag:	N		
Type of ground water site:	Single well, other than collector or Ranney type		
Aquifer Type:	Not Reported		
Aquifer:	BEDROCK		
Well depth:	185	Hole depth:	Not Reported
Source of depth data:	Not Reported		
Project number:	BULLGW-35		
Real time data flag:	Not Reported	Daily flow data begin date:	Not Reported
Daily flow data end date:	Not Reported	Daily flow data count:	Not Reported
Peak flow data begin date:	Not Reported	Peak flow data end date:	Not Reported
Peak flow data count:	Not Reported	Water quality data begin date:	Not Reported
Water quality data end date:	Not Reported	Water quality data count:	Not Reported
Ground water data begin date:	Not Reported	Ground water data end date:	Not Reported
Ground water data count:	Not Reported		

Ground-water levels, Number of Measurements: 0

8
NW
1/2 - 1 Mile
Higher

FED USGS USGS2127685

Agency cd:	USGS	Site no:	411024073495601
Site name:	WE 919		
Latitude:	411024		
Longitude:	0734956	Dec lat:	41.17342852
Dec lon:	-73.83180156	Coor meth:	M
Coor accr:	F	Latlong datum:	NAD27
Dec latlong datum:	NAD83	District:	36
State:	36	County:	119
Country:	US	Land net:	Not Reported
Location map:	BULL GW-35	Map scale:	Not Reported
Altitude:	485		
Altitude method:	Interpolated from topographic map		
Altitude accuracy:	5		
Altitude datum:	National Geodetic Vertical Datum of 1929		
Hydrologic:	Lower Hudson. Connecticut, New Jersey, New York. Area = 720 sq.mi.		
Topographic:	Not Reported		
Site type:	Ground-water other than Spring	Date construction:	Not Reported
Date inventoried:	Not Reported	Mean greenwich time offset:	EST

GEOCHECK® - PHYSICAL SETTING SOURCE MAP FINDINGS

Local standard time flag:	N		
Type of ground water site:	Single well, other than collector or Ranney type		
Aquifer Type:	Not Reported		
Aquifer:	BEDROCK		
Well depth:	201	Hole depth:	Not Reported
Source of depth data:	Not Reported		
Project number:	BULLGW-35		
Real time data flag:	Not Reported	Daily flow data begin date:	Not Reported
Daily flow data end date:	Not Reported	Daily flow data count:	Not Reported
Peak flow data begin date:	Not Reported	Peak flow data end date:	Not Reported
Peak flow data count:	Not Reported	Water quality data begin date:	Not Reported
Water quality data end date:	Not Reported	Water quality data count:	Not Reported
Ground water data begin date:	Not Reported	Ground water data end date:	Not Reported
Ground water data count:	Not Reported		

Ground-water levels, Number of Measurements: 0

9
ENE
1/2 - 1 Mile
Higher

FED USGS USGS2127616

Agency cd:	USGS	Site no:	411011073482801
Site name:	WE 376		
Latitude:	411012		
Longitude:	0734830	Dec lat:	41.17009526
Dec lon:	-73.80791191	Coor meth:	M
Coor accr:	F	Latlong datum:	NAD27
Dec latlong datum:	NAD83	District:	36
State:	36	County:	119
Country:	US	Land net:	Not Reported
Location map:	BULL GW-35	Map scale:	Not Reported
Altitude:	370.00		
Altitude method:	Interpolated from topographic map		
Altitude accuracy:	5		
Altitude datum:	National Geodetic Vertical Datum of 1929		
Hydrologic:	Lower Hudson. Connecticut, New Jersey, New York. Area = 720 sq.mi.		
Topographic:	Not Reported		
Site type:	Ground-water other than Spring	Date construction:	Not Reported
Date inventoried:	Not Reported	Mean greenwich time offset:	EST
Local standard time flag:	N		
Type of ground water site:	Single well, other than collector or Ranney type		
Aquifer Type:	Not Reported		
Aquifer:	BEDROCK		
Well depth:	350	Hole depth:	Not Reported
Source of depth data:	Not Reported		
Project number:	BULLGW-35		
Real time data flag:	Not Reported	Daily flow data begin date:	Not Reported
Daily flow data end date:	Not Reported	Daily flow data count:	Not Reported
Peak flow data begin date:	Not Reported	Peak flow data end date:	Not Reported
Peak flow data count:	Not Reported	Water quality data begin date:	Not Reported
Water quality data end date:	Not Reported	Water quality data count:	Not Reported
Ground water data begin date:	Not Reported	Ground water data end date:	Not Reported
Ground water data count:	Not Reported		

Ground-water levels, Number of Measurements: 0

GEOCHECK® - PHYSICAL SETTING SOURCE MAP FINDINGS

Map ID
Direction
Distance
Elevation

Database EDR ID Number

10
SSE
1/2 - 1 Mile
Higher

FED USGS USGS2127977

Agency cd:	USGS	Site no:	410917073484001
Site name:	WE 915		
Latitude:	410919		
Longitude:	0734850	Dec lat:	41.15537324
Dec lon:	-73.81346754	Coor meth:	M
Coor accr:	F	Latlong datum:	NAD27
Dec latlong datum:	NAD83	District:	36
State:	36	County:	119
Country:	US	Land net:	Not Reported
Location map:	BULL GW-35	Map scale:	Not Reported
Altitude:	357.00		
Altitude method:	Interpolated from topographic map		
Altitude accuracy:	5		
Altitude datum:	National Geodetic Vertical Datum of 1929		
Hydrologic:	Lower Hudson. Connecticut, New Jersey, New York. Area = 720 sq.mi.		
Topographic:	Not Reported		
Site type:	Ground-water other than Spring	Date construction:	Not Reported
Date inventoried:	Not Reported	Mean greenwich time offset:	EST
Local standard time flag:	N		
Type of ground water site:	Single well, other than collector or Ranney type		
Aquifer Type:	Not Reported		
Aquifer:	BEDROCK		
Well depth:	103	Hole depth:	Not Reported
Source of depth data:	Not Reported		
Project number:	BULLGW-35		
Real time data flag:	Not Reported	Daily flow data begin date:	Not Reported
Daily flow data end date:	Not Reported	Daily flow data count:	Not Reported
Peak flow data begin date:	Not Reported	Peak flow data end date:	Not Reported
Peak flow data count:	Not Reported	Water quality data begin date:	Not Reported
Water quality data end date:	Not Reported	Water quality data count:	Not Reported
Ground water data begin date:	Not Reported	Ground water data end date:	Not Reported
Ground water data count:	Not Reported		

Ground-water levels, Number of Measurements: 0

11
NNW
1/2 - 1 Mile
Higher

FED USGS USGS2127447

Agency cd:	USGS	Site no:	411033073495101
Site name:	WE 920		
Latitude:	411034		
Longitude:	0734952	Dec lat:	41.17620625
Dec lon:	-73.83069043	Coor meth:	M
Coor accr:	F	Latlong datum:	NAD27
Dec latlong datum:	NAD83	District:	36
State:	36	County:	119
Country:	US	Land net:	Not Reported
Location map:	BULL GW-35	Map scale:	Not Reported

GEOCHECK® - PHYSICAL SETTING SOURCE MAP FINDINGS

Altitude:	485		
Altitude method:	Interpolated from topographic map		
Altitude accuracy:	5		
Altitude datum:	National Geodetic Vertical Datum of 1929		
Hydrologic:	Lower Hudson. Connecticut, New Jersey, New York. Area = 720 sq.mi.		
Topographic:	Not Reported		
Site type:	Ground-water other than Spring	Date construction:	Not Reported
Date inventoried:	Not Reported	Mean greenwich time offset:	EST
Local standard time flag:	N		
Type of ground water site:	Single well, other than collector or Ranney type		
Aquifer Type:	Not Reported		
Aquifer:	BEDROCK		
Well depth:	140	Hole depth:	Not Reported
Source of depth data:	Not Reported		
Project number:	BULLGW-35		
Real time data flag:	Not Reported	Daily flow data begin date:	Not Reported
Daily flow data end date:	Not Reported	Daily flow data count:	Not Reported
Peak flow data begin date:	Not Reported	Peak flow data end date:	Not Reported
Peak flow data count:	Not Reported	Water quality data begin date:	Not Reported
Water quality data end date:	Not Reported	Water quality data count:	Not Reported
Ground water data begin date:	Not Reported	Ground water data end date:	Not Reported
Ground water data count:	Not Reported		

Ground-water levels, Number of Measurements: 0

12
ESE
1/2 - 1 Mile
Higher

FED USGS USGS2127746

Agency cd:	USGS	Site no:	410936073482101
Site name:	WE 914		
Latitude:	410939		
Longitude:	0734820	Dec lat:	41.16092872
Dec lon:	-73.80513399	Coor meth:	M
Coor accr:	F	Latlong datum:	NAD27
Dec latlong datum:	NAD83	District:	36
State:	36	County:	119
Country:	US	Land net:	Not Reported
Location map:	BULL GW-35	Map scale:	Not Reported
Altitude:	400.00		
Altitude method:	Interpolated from topographic map		
Altitude accuracy:	5		
Altitude datum:	National Geodetic Vertical Datum of 1929		
Hydrologic:	Lower Hudson. Connecticut, New Jersey, New York. Area = 720 sq.mi.		
Topographic:	Not Reported		
Site type:	Ground-water other than Spring	Date construction:	Not Reported
Date inventoried:	Not Reported	Mean greenwich time offset:	EST
Local standard time flag:	N		
Type of ground water site:	Single well, other than collector or Ranney type		
Aquifer Type:	Not Reported		
Aquifer:	BEDROCK		
Well depth:	225	Hole depth:	Not Reported
Source of depth data:	Not Reported		
Project number:	BULLGW-35		
Real time data flag:	Not Reported	Daily flow data begin date:	Not Reported
Daily flow data end date:	Not Reported	Daily flow data count:	Not Reported
Peak flow data begin date:	Not Reported	Peak flow data end date:	Not Reported

GEOCHECK® - PHYSICAL SETTING SOURCE MAP FINDINGS

Peak flow data count: Not Reported
Water quality data end date: Not Reported
Ground water data begin date: Not Reported
Ground water data count: Not Reported

Water quality data begin date: Not Reported
Water quality data count: Not Reported
Ground water data end date: Not Reported

Ground-water levels, Number of Measurements: 0

13
SSE
1/2 - 1 Mile
Lower

FED USGS USGS2127956

Agency cd:	USGS	Site no:	410910073484001
Site name:	WE 913		
Latitude:	410914		
Longitude:	0734846	Dec lat:	41.15398437
Dec lon:	-73.81235638	Coor meth:	M
Coor accr:	F	Latlong datum:	NAD27
Dec latlong datum:	NAD83	District:	36
State:	36	County:	119
Country:	US	Land net:	Not Reported
Location map:	BULL GW-35	Map scale:	Not Reported
Altitude:	300.00		
Altitude method:	Interpolated from topographic map		
Altitude accuracy:	5		
Altitude datum:	National Geodetic Vertical Datum of 1929		
Hydrologic:	Lower Hudson, Connecticut, New Jersey, New York. Area = 720 sq.mi.		
Topographic:	Not Reported		
Site type:	Ground-water other than Spring	Date construction:	Not Reported
Date inventoried:	Not Reported	Mean greenwich time offset:	EST
Local standard time flag:	N		
Type of ground water site:	Single well, other than collector or Ranney type		
Aquifer Type:	Not Reported		
Aquifer:	BEDROCK		
Well depth:	49.0	Hole depth:	Not Reported
Source of depth data:	Not Reported		
Project number:	BULLGW-35		
Real time data flag:	Not Reported	Daily flow data begin date:	Not Reported
Daily flow data end date:	Not Reported	Daily flow data count:	Not Reported
Peak flow data begin date:	Not Reported	Peak flow data end date:	Not Reported
Peak flow data count:	Not Reported	Water quality data begin date:	Not Reported
Water quality data end date:	Not Reported	Water quality data count:	Not Reported
Ground water data begin date:	Not Reported	Ground water data end date:	Not Reported
Ground water data count:	Not Reported		

Ground-water levels, Number of Measurements: 0

14
North
1/2 - 1 Mile
Higher

FED USGS USGS2127498

GEOCHECK® - PHYSICAL SETTING SOURCE MAP FINDINGS

Agency cd:	USGS	Site no:	411042073491301
Site name:	WE 349		
Latitude:	411045		
Longitude:	0734915	Dec lat:	41.17926178
Dec lon:	-73.82041236	Coor meth:	M
Coor accr:	F	Latlong datum:	NAD27
Dec latlong datum:	NAD83	District:	36
State:	36	County:	119
Country:	US	Land net:	Not Reported
Location map:	BULL GW-35	Map scale:	Not Reported
Altitude:	500.00		
Altitude method:	Interpolated from topographic map		
Altitude accuracy:	5		
Altitude datum:	National Geodetic Vertical Datum of 1929		
Hydrologic:	Lower Hudson. Connecticut, New Jersey, New York. Area = 720 sq.mi.		
Topographic:	Not Reported		
Site type:	Ground-water other than Spring	Date construction:	Not Reported
Date inventoried:	Not Reported	Mean greenwich time offset:	EST
Local standard time flag:	N		
Type of ground water site:	Single well, other than collector or Ranney type		
Aquifer Type:	Not Reported		
Aquifer:	BEDROCK		
Well depth:	86.0	Hole depth:	Not Reported
Source of depth data:	Not Reported		
Project number:	BULLGW-35		
Real time data flag:	Not Reported		
Daily flow data end date:	Not Reported		
Peak flow data begin date:	Not Reported		
Peak flow data count:	Not Reported		
Water quality data end date:	Not Reported		
Ground water data begin date:	Not Reported		
Ground water data count:	Not Reported		

Ground-water levels, Number of Measurements: 0

GEOCHECK® - PHYSICAL SETTING SOURCE MAP FINDINGS RADON

AREA RADON INFORMATION

State Database: NY Radon

Radon Test Results

Zip	Num Sites	< 4 Pci/L	>= 4 Pci/L	>= 20 Pci/L	Avg > 4 Pci/L	Max Pci/L
10562	65	58 (89.2%)	7 (10.8%)	0 (0%)	2.06	10.9

Federal EPA Radon Zone for WESTCHESTER County: 3

Note: Zone 1 indoor average level > 4 pCi/L.
: Zone 2 indoor average level >= 2 pCi/L and <= 4 pCi/L.
: Zone 3 indoor average level < 2 pCi/L.

Federal Area Radon Information for WESTCHESTER COUNTY, NY

Number of sites tested: 650

Area	Average Activity	% <4 pCi/L	% 4-20 pCi/L	% >20 pCi/L
Living Area	0.930 pCi/L	97%	3%	0%
Basement	1.730 pCi/L	84%	13%	2%

PHYSICAL SETTING SOURCE RECORDS SEARCHED

TOPOGRAPHIC INFORMATION

USGS 7.5' Digital Elevation Model (DEM)

Source: United States Geologic Survey

EDR acquired the USGS 7.5' Digital Elevation Model in 2002 and updated it in 2006. The 7.5 minute DEM corresponds to the USGS 1:24,000- and 1:25,000-scale topographic quadrangle maps. The DEM provides elevation data with consistent elevation units and projection.

HYDROLOGIC INFORMATION

Flood Zone Data: This data, available in select counties across the country, was obtained by EDR in 1999 from the Federal Emergency Management Agency (FEMA). Data depicts 100-year and 500-year flood zones as defined by FEMA.

NWI: National Wetlands Inventory. This data, available in select counties across the country, was obtained by EDR in 2002 and 2005 from the U.S. Fish and Wildlife Service.

State Wetlands Data: Freshwater Wetlands

Source: Department of Environmental Conservation

Telephone: 518-402-8961

HYDROGEOLOGIC INFORMATION

AQUIFLOW[®] Information System

Source: EDR proprietary database of groundwater flow information

EDR has developed the AQUIFLOW Information System (AIS) to provide data on the general direction of groundwater flow at specific points. EDR has reviewed reports submitted to regulatory authorities at select sites and has extracted the date of the report, hydrogeologically determined groundwater flow direction and depth to water table information.

GEOLOGIC INFORMATION

Geologic Age and Rock Stratigraphic Unit

Source: P.G. Schruben, R.E. Arndt and W.J. Bawiec, Geology of the Conterminous U.S. at 1:2,500,000 Scale - A digital representation of the 1974 P.B. King and H.M. Beikman Map, USGS Digital Data Series DDS - 11 (1994).

STATSGO: State Soil Geographic Database

Source: Department of Agriculture, Natural Resources Conservation Services

The U.S. Department of Agriculture's (USDA) Natural Resources Conservation Service (NRCS) leads the national Conservation Soil Survey (NCSS) and is responsible for collecting, storing, maintaining and distributing soil survey information for privately owned lands in the United States. A soil map in a soil survey is a representation of soil patterns in a landscape. Soil maps for STATSGO are compiled by generalizing more detailed (SSURGO) soil survey maps.

SSURGO: Soil Survey Geographic Database

Source: Department of Agriculture, Natural Resources Conservation Services (NRCS)

Telephone: 800-672-5559

SSURGO is the most detailed level of mapping done by the Natural Resources Conservation Services, mapping scales generally range from 1:12,000 to 1:63,360. Field mapping methods using national standards are used to construct the soil maps in the Soil Survey Geographic (SSURGO) database. SSURGO digitizing duplicates the original soil survey maps. This level of mapping is designed for use by landowners, townships and county natural resource planning and management.

PHYSICAL SETTING SOURCE RECORDS SEARCHED

LOCAL / REGIONAL WATER AGENCY RECORDS

FEDERAL WATER WELLS

PWS: Public Water Systems

Source: EPA/Office of Drinking Water

Telephone: 202-564-3750

Public Water System data from the Federal Reporting Data System. A PWS is any water system which provides water to at least 25 people for at least 60 days annually. PWSs provide water from wells, rivers and other sources.

PWS ENF: Public Water Systems Violation and Enforcement Data

Source: EPA/Office of Drinking Water

Telephone: 202-564-3750

Violation and Enforcement data for Public Water Systems from the Safe Drinking Water Information System (SDWIS) after August 1995. Prior to August 1995, the data came from the Federal Reporting Data System (FRDS).

USGS Water Wells: USGS National Water Inventory System (NWIS)

This database contains descriptive information on sites where the USGS collects or has collected data on surface water and/or groundwater. The groundwater data includes information on wells, springs, and other sources of groundwater.

STATE RECORDS

New York Public Water Wells

Source: New York Department of Health

Telephone: 518-458-6731

Oil and Gas Well Database

Department of Environmental Conservation

Telephone: 518-402-8056

These files contain records, in the database, of wells that have been drilled.

OTHER STATE DATABASE INFORMATION

RADON

State Database: NY Radon

Source: Department of Health

Telephone: 518-402-7556

Radon Test Results

Area Radon Information

Source: USGS

Telephone: 703-356-4020

The National Radon Database has been developed by the U.S. Environmental Protection Agency (USEPA) and is a compilation of the EPA/State Residential Radon Survey and the National Residential Radon Survey. The study covers the years 1986 - 1992. Where necessary data has been supplemented by information collected at private sources such as universities and research institutions.

EPA Radon Zones

Source: EPA

Telephone: 703-356-4020

Sections 307 & 309 of IRAA directed EPA to list and identify areas of U.S. with the potential for elevated indoor radon levels.

OTHER

Airport Landing Facilities: Private and public use landing facilities

Source: Federal Aviation Administration, 800-457-6656

Epicenters: World earthquake epicenters, Richter 5 or greater

Source: Department of Commerce, National Oceanic and Atmospheric Administration

PHYSICAL SETTING SOURCE RECORDS SEARCHED

STREET AND ADDRESS INFORMATION

© 2007 Tele Atlas North America, Inc. All rights reserved. This material is proprietary and the subject of copyright protection and other intellectual property rights owned by or licensed to Tele Atlas North America, Inc. The use of this material is subject to the terms of a license agreement. You will be held liable for any unauthorized copying or disclosure of this material.

ENDORSEMENT NO. 33

This endorsement, effective 12:01AM, August 21, 2007
Forms a part of Policy No: PLCC 529 5382
Issued to: WHIPPANY VENTURE I, L.L.C.
By: LEXINGTON INSURANCE COMPANY

THIS ENDORSEMENT CHANGES THE POLICY. PLEASE READ IT CAREFULLY.

NAMED INSURED ENDORSEMENT

It is hereby agreed that Endorsement No. 5 is deleted in its entirety, and Section VIII., DEFINITIONS, Paragraph O. **Named Insured** is deleted in its entirety and replaced with the following:

- O. **Named Insured** means, under all Coverages, the person or entity named in Item 1. of the Declarations acting on behalf of all other **Insureds**, if any, for the payment or return of any premium, payment of any deductible, receipt and acceptance of any endorsement issued to form a part of this Policy, giving and receiving notice of cancellation or nonrenewal, and the exercise of the rights provided in the **Extended Reporting Period** clause.

Furthermore, solely with respect to Coverages A through J it is hereby agreed that the following entity(s) are included as **Named Insureds** but solely as respects liability arising out of the ownership, operation, maintenance or use of the **Insured Property(s)** designated in Item 5. of the Declarations. The first **Named Insured**, previously designated in Item 1. of the Declarations shall remain unchanged as such.

NAMED INSURED(S)

1. LandBank Properties L.L.C.,
2. The LandBank Group Inc.,
3. Shaw Environmental & Infrastructure, Inc.,
4. The Shaw Group, Inc.;
5. Forest Hills Developers LLC.;
6. Sterling Properties Group LLC; and
7. Forest Hill Developers II, LLC

All other terms, conditions, and exclusions shall remain the same.

AUTHORIZED REPRESENTATIVE
or countersignature (in states where applicable)